

# YC06, 08 Series

5 Port Pilot Air Operated Valve  
Rubber Seal/In-line mounting

### YCS2406 | YCS2408

2-position, single sided

### YCD2406 | YCD2408

2-position, double sided

### YCD3406 | YCD3408

3-position, closed center

### YCE3406 | YCE3408

3-position, ABR connect

### YCO3406 | YCO3408

3-position, PAB connect



## Specifications (YC06 series)

Model No.	Unit	YCS2406	YCD2406	YCD3406	YCE3406	YCO3406
Fluid		Non-lubricated/lubricated air				
Port size		port 1,2,4: Rc¼ port 3,5 : Rc½				
Sonic-speed transmissionⒺ	dm³/(s·bar)	2.50		2.30		
Critical pressure ratioⒺ		0.43		0.38		
Effective areaⒺ	mm²	12		11		
Operating ambient temperature	°C	-5~50❶				
Operating pressure range	MPa	0.2~0.8	0~0.8			
Pilot pressure	MPa	0.2~0.8Ⓔ				
Mass	g	100	130	150		

## Specifications (YC08 series)

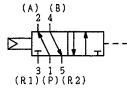
Model No.	Unit	YCS2408	YCD2408	YCD3408	YCE3408	YCO3408
Fluid		Non-lubricated/lubricated air				
Port size		port 1,2,4: Rc¾ port 3,5 : Rc¾				
Sonic-speed transmissionⒺ	dm³/(s·bar)	6.00		5.00		2.8
Critical pressure ratioⒺ		0.45		0.38		0.35
Effective areaⒺ	mm²	30		25		14
Operating ambient temperature	°C	-5~50❶				
Operating pressure range	MPa	0.2~0.8		0~0.8		
Pilot pressure	MPa	0.2~0.8Ⓔ				
Mass	g	150	180	210		



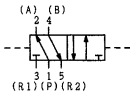
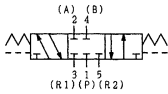
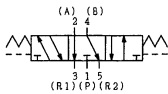
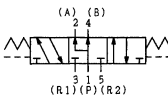
1. When the temperature falls below 5 °C, please provide air dryer to prevent water frozen.
2. Pilot pressure must remain greater than the working pressure. (Pilot pressure ≥ Working pressure).
3. The value shown in sonic-speed transmission, critical pressure ratio, effective area, Cv value represent the value of Port 1 -> 4.

**YCS2406 - 02**

Model No.

**YCS2406, YCS2408**

Port size

02 : RC $\frac{1}{4}$ 03 : RC $\frac{3}{8}$ **YCD2406, YCD2408****YCD3406, YCD3408****YCE3406, YCE3408****YCO3406, YCO3408****Dimensions**

- If you need dimensions graph, please contact FONTAL.