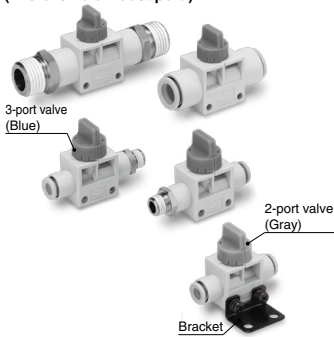


Finger Valve

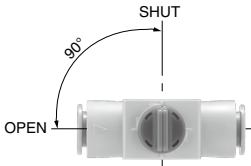
VHK-A Series



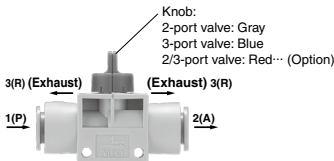
With a function to prevent the nob from coming out
 Large effective area: 2.0 to 17.5 mm²
 Reduced operating force
 Poppet valve construction seldom suffers seal deflection.
 The series begins with the min. tubing O.D. of $\phi 4$.
 Selection from four types in accordance with the piping specifications
 The 3-port valve discharges residual pressure from 2(A) with the handle set at SHUT.
 (There is no exhaust port.)



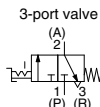
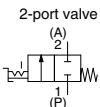
The valve direction clearly indicates whether the valve is open or closed.
 (SHUT-OPEN: Counterclockwise)



2-port valves and 3-port valves can be distinguished by the color of their knobs.



Symbol



Specifications

Valve	2/3-port valves
Fluid	Air
Proof pressure	1.5 MPa
Max. operating pressure ^{Note 1)}	1.0 MPa
Operating vacuum pressure [*]	-100 kPa
Ambient temperature and operating fluid temperatures	0 to 60°C
Applicable tubing material ^{Note 2)}	Nylon, Soft nylon, Polyurethane
Accessory (Option)	Bracket

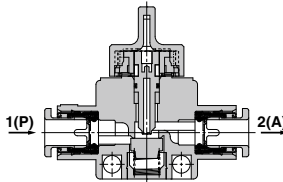
Note 1) Please note that when the valve is used at micro pressures of 0.1 MPa or less, valve leakage may be more than the standard value (5 cm³/min).

Note 2) Use caution about the maximum operating pressure when soft nylon or polyurethane tubing is used. (Refer to Best Pneumatics No. 7 for details.)

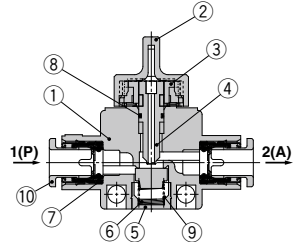
* Use VHK2 (2-port valve) for vacuum application.

Construction

2-port valve: VHK2 series



3-port valve: VHK3 series



Component Parts

No.	Description	Material	Note
1	Body	PBT	
2	Knob	POM	
3	Cam ring	POM	
4	Stem	POM	
5	Spring guide	Brass	Electroless nickel plated
6	Spring	Stainless steel	
7	Seal	NBR	
8	O-ring	NBR	
9	Valve	NBR	
10	Cassette	—	

How to Order

VHK 2 A - 04F - 04F

Valve model

2	2-port valve
3	3-port valve

Bracket

Nil	None
L	With L-bracket

* Bracket and screws are attached.

Knob color

Nil	2-port valve	Gray
(Standard)	3-port valve	Blue
R	2-port valve	Red
(Option)	3-port valve	Red

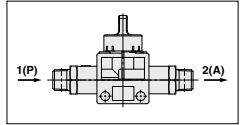
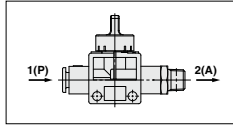
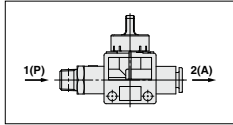
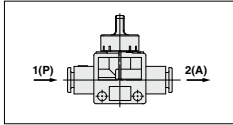
1(P) port size

04F	ø4
06F	ø6
08F	ø8
10F	ø10
12F	ø12
M5	M5 x 0.8
01S	R $\frac{1}{8}$
02S	R $\frac{1}{4}$
03S	R $\frac{3}{8}$
04S	R $\frac{1}{2}$

2(A) port size

04F	ø4
06F	ø6
08F	ø8
10F	ø10
12F	ø12
M5	M5 x 0.8
01S	R $\frac{1}{8}$
02S	R $\frac{1}{4}$
03S	R $\frac{3}{8}$
04S	R $\frac{1}{2}$

Piping Variations



1(P): One-touch fitting
2(A): One-touch fitting

		2(A) Applicable tubing O.D. (mm)				
1(P)		ø4	ø6	ø8	ø10	ø12
Applicable tubing O.D. (mm)	ø4	●				
	ø6	●	●			
	ø8		●	●		
	ø10			●	●	
	ø12				●	●

1(P): Male thread
2(A): One-touch fitting

		2(A) Applicable tubing O.D. (mm)					
1(P)		ø4	ø6	ø8	ø10	ø12	
Port size R	M5	●	●				
	$\frac{1}{8}$	●	●	●			
	$\frac{1}{4}$			●	●		
	$\frac{3}{8}$			●	●	●	
	$\frac{1}{2}$				●	●	

1(P): One-touch fitting
2(A): Male thread

		2(A) Port size R					
1(P)		M5	$\frac{1}{8}$	$\frac{1}{4}$	$\frac{3}{8}$	$\frac{1}{2}$	
Applicable tubing O.D. (mm)	ø4	●	●				
	ø6	●	●	●	●		
	ø8		●	●	●	●	
	ø10			●	●	●	
	ø12				●	●	

1(P): Male thread
2(A): Male thread

		2(A) Port size R					
1(P)		M5	$\frac{1}{8}$	$\frac{1}{4}$	$\frac{3}{8}$	$\frac{1}{2}$	
Port size R	M5	●					
	$\frac{1}{8}$	●	●				
	$\frac{1}{4}$		●	●			
	$\frac{3}{8}$			●	●		
	$\frac{1}{2}$				●	●	

VM

VMG

VR

VR51

VHK

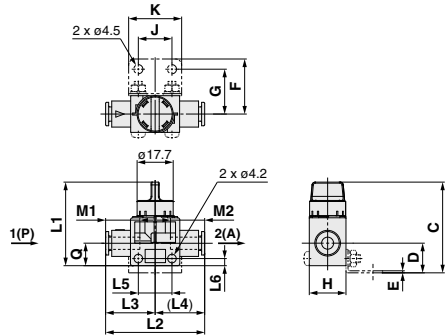
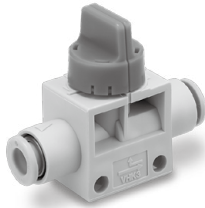
VH

VHS □

VHS

VHK-A Series

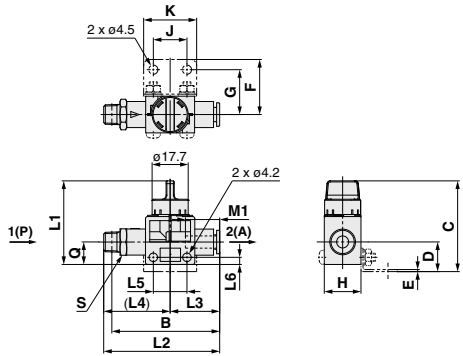
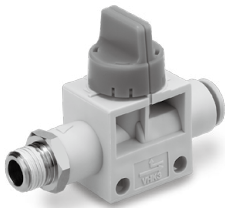
1(P)/2(A): One-touch Fitting



Applicable tubing O. D. (mm)		Model	H	L1	L2	L3	L4	L5	L6	M1	M2	Q	Flow rate characteristics						Weight (g)	Bracket mounting dimensions							
1(P)	2(A)												1(P)→2(A)			2(A)→3(R)*1				Bracket assembly no.		C	D	E	F	G	J
				Q(m ³ /bar)		b		Cv		Q(m ³ /bar)		b		Cv													
4	4	VHK□A-04F-04F	18	41	47.6	23.8	23.8	16.5	3.5	15.8	15.8	11	0.7	0.15	0.14	0.25	0.6	0.06	15	VHK-B1A	44.5	14.5	1	27	22	16.5	26
					48	23.7	15.8	15.8	1.0	0.15	0.21		0.25	0.6	0.06	15											
6	6	VHK□A-06F-04F	18	41	48.6	24.3	24.3	16.5	3.5	16.8	16.8	11	1.4	0.15	0.35	0.25	0.6	0.06	16	VHK-B1A	44.5	14.5	1	27	22	16.5	26
					50.5	24.3	16.8	16.8	2	0.15	0.36		0.25	0.6	0.06	16											
8	8	VHK□A-08F-06F	18	41	52.4	26.2	26.2	16.5	3.5	18.7	18.7	11	1.9	0.15	0.39	0.25	0.6	0.06	17	VHK-B1A	44.5	14.5	1	27	22	16.5	26
					58.5	28	18.7	18.7	2.7	0.15	0.55		0.67	0.6	0.16	29											
10	10	VHK□A-10F-08F	22	46	61	30.5	30.5	21.5	4	20.8	20.8	14	3.1	0.15	0.65	0.67	0.6	0.16	29	VHK-B2A	49	17	1	30	25	21.5	31
					62	31.5	20.8	20.8	3.3	0.15	0.68		0.67	0.6	0.16	31											
12	12	VHK□A-12F-10F	22	46	63	31.5	31.5	21.5	4	21.8	21.8	14	3.4	0.15	0.70	0.67	0.6	0.16	32	VHK-B2A	49	17	1	30	25	21.5	31
					63	31.5	21.8	21.8	3.4	0.15	0.70		0.67	0.6	0.16	32											

*1 3-port valve

1(P): Male Thread, 2(A): One-touch Fitting



Connection thread R		Applicable tubing O. D. (mm)		Model	H	L1	L2	L3	L4	L5	L6	M1	Q	Flow rate characteristics						Weight (g)	S (Width across flats)	Bracket mounting dimensions								
1(P)	2(A)	1(P)→2(A)												2(A)→3(R)*1			Bracket assembly no.		C			D	E	F	G	J	K			
						Q(m ³ /bar)		b		Cv		Q(m ³ /bar)		b		Cv														
M5	4	VHK□A-M5-04F	18	41	52.9	23.8	29.1			16.5	3.5	15.8	11	0.4	0.15	0.10	0.25	0.6	0.06	19	49	11	VHK-B1A	44.5	14.5	1	27	22	16.5	26
					53.9	24.3	29.6	16.8	0.4	0.15	0.10	0.25		0.6	0.06	21	50	13												
1/8	4	VHK□A-01S-04F	18	41	55.4	23.8	31.6			15.8		15.8	11	0.7	0.15	0.17	0.25	0.6	0.06	21	51	11	VHK-B1A	44.5	14.5	1	27	22	16.5	26
					56.9	24.3	32.6	16.5	3.5	16.8	1.4	0.15		0.35	0.25	0.6	0.06	23	53	13										
1/4	6	VHK□A-01S-06F	18	41	62.2	26.2	36			18.7		18.7	11	1.9	0.15	0.47	0.25	0.6	0.06	31	58	17	VHK-B1A	44.5	14.5	1	27	22	16.5	26
					60.4	24.3	36.1	16.8	1.4	0.15	0.35	0.25		0.6	0.06	31	54	17												
1/4	8	VHK□A-02S-06F	18	41	66.2	26.2	39			18.7		18.7	11	1.9	0.15	0.47	0.25	0.6	0.06	32	59	14	VHK-B1A	44.5	14.5	1	27	22	16.5	26
					62.4	24.3	38.1	16.8	1.4	0.15	0.35	0.25		0.6	0.06	31	54	17												
1/4	10	VHK□A-02S-10F	22	46	73.8	30.5	43.3			20.8		20.8	14	3.1	0.15	0.78	0.67	0.6	0.16	49	68	19	VHK-B2A	49	17	1	30	25	21.5	31
					76.3	31.5	44.8	21.8	3.4	0.15	0.85	0.67		0.6	0.16	63	70	22												
3/8	6	VHK□A-03S-06F	18	41	62.4	24.3	38.1			16.8		16.8	11	1.4	0.15	0.35	0.25	0.6	0.06	41	56		VHK-B1A	44.5	11.5	1	27	22	16.5	26
					66.2	26.2	40	18.7	1.9	0.15	0.47	0.25		0.6	0.06	40	60													
3/8	8	VHK□A-03S-08F	18	41	74.3	31.5	45.8			21.8		21.8	14	3.4	0.15	0.85	0.67	0.6	0.16	64	71	22	VHK-B2A	49	17	1	30	25	21.5	31
					77.3	31.5	45.8	21.8	3.1	0.15	0.78	0.67		0.6	0.16	51	68	19												
1/2	10	VHK□A-04S-10F	22	46	78.2	30.5	47.7			20.8		20.8	14	3.1	0.15	0.78	0.67	0.6	0.16	72	70	22	VHK-B2A	49	17	1	30	25	21.5	31
					80.2	31.5	48.7	21.8	3.4	0.15	0.85	0.67		0.6	0.16	70	72	22												

*1 3-port valve *2 Reference dimensions after insertion of R thread.



VHK-A Series/Precautions

Be sure to read this before handling the products.

Refer to back page 50 for Safety Instructions and pages 3 to 9 for 3/4/5 Port Solenoid Valve Precautions.

Design

⚠ Warning

1. Please contact SMC when fluids other than air are used.
2. Do not supply air pressure from 2(A) port. The air will leak out from 1(P) port.
3. Since the valve allows a small volume of air leakage, it may not be suitable for holding pressure in a pressure vessel.

Selection

⚠ Caution

Operation method:

The valve must be switched to OPEN or SHUT instantly and securely. Stopping the handle halfway between the extreme positions may cause malfunction.

Mounting

⚠ Caution

L type bracket mounting:

Apply a tightening torque of 0.5 to 0.6 N·m to the bolts when the bracket is mounted on the body.

Piping

⚠ Caution

Precautions for handling the male threads of the R pipe fitting with seal

1. Use a wrench to secure the hexagon portion to screw in the fitting. If the size of the wrench is not appropriate it will be stripped.
2. To screw in the fitting, first hand-tighten; then, use a tool to rotate it 2 to 3 turns. If it is tightened excessively, more sealing agent will be forced out. Therefore, make sure to remove the extra sealing agent.
3. Re-use of fittings:
 - 1) Ordinarily, the fitting can be reused 2 to 3 times.
 - 2) Before reusing the fitting, clear off the sealing agent that remains on the removed pipe fitting using an air blower. If the sealing agent is peeled off and enters the peripheral equipment, it can cause air leakage.
 - 3) If the sealing effect has been lost, wrap a seal tape over the sealing agent to reuse the fitting. Do not use any sealing agent other than seal tape.

One-touch Fitting

⚠ Caution

1. When tubing of brands other than SMC's are used, verify that the tubing O.D. satisfies the following accuracy;

- Nylon tubing Within ± 0.1 mm
- Soft nylon tubing Within ± 0.1 mm
- Polyurethane tubing Within $+0.1$ mm, -0.2 mm

If the tube's external accuracy is not satisfied, it may not be possible to connect the tube. Even if it is connected, air leakage or tube disconnection may result.