

VC5, 13 Series

5 Port Air Operated Valve
Rubber Seal/Sub-base Mounting Type

VCS245 | VCS2413

2-position, single sided

VCD245 | VCD2413

2-position, double sided

VCD345 | VCD3413

3-position, closed center

VCE345 | VCE3413

3-position, ABR connect

VCO345 | VCO3413

3-position, PAB connect



Specifications(VC5 series)

Model No.	Unit	VCS245	VCD245	VCD345	VCE345	VCO345
Fluid		Non-lubricated/lubricated air				
Port size		M5, RC $\frac{1}{8}$				
Sonic-speed transmission \oplus	dm 3 /(s·bar)	0.74(M5)	0.8(RC $\frac{1}{8}$)	0.44(M5)	0.5(RC $\frac{1}{8}$)	
Critical pressure ratio \oplus		0.2(M5)	0.25(RC $\frac{1}{8}$)	0.2(M5)	0.25(RC $\frac{1}{8}$)	
Effective area \oplus	mm 2	3.7(M5)	4(RC $\frac{1}{8}$)	2.2(M5)	2.5(RC $\frac{1}{8}$)	
Operating ambient temperature	°C	-5~50 \ominus				
Operating pressure range	MPa	0.2~0.8		0~0.8		
Pilot pressure	MPa	0.2~0.8 \ominus				
Mass \ominus	g	78(90)	82(94)	91(103)		

Specifications(VC13 series)

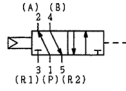
Model No.	Unit	VCS2413	VCD2413	VCD3413	VCE3413	VCO3413
Fluid		Non-lubricated/lubricated air				
Port size		RC $\frac{1}{4}$				
Sonic-speed transmission \oplus	dm 3 /(s·bar)	2.40		1.50		1.00
Critical pressure ratio \oplus		0.22		0.2		0.22
Effective area \oplus	mm 2	12		7.5		5
Operating ambient temperature	°C	-5~50 \ominus				
Operating pressure range	MPa	0.2~0.8		0~0.8		
Pilot pressure	MPa	0.2~0.8 \ominus				
Mass \ominus	g	157	167	184		



1. When the temperature falls below 5 °C, please provide air dryer to prevent water frozen.
2. Pilot pressure must remain greater than the working pressure. (Pilot pressure \geq Working pressure).
3. Value within the brackt () represent the value of Rc $\frac{1}{8}$.
4. The value shown in sonic-speed transmission, critical pressure ratio, effective area, Cv value represent the value of Port 1 -> 4.

VCS245 - 01

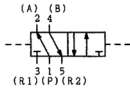
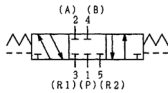
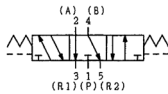
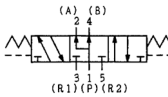
Model No.

VCS245, VCS2413

Port size

NB : Without sub-base

M5 : M5×0.8

01 : RC $\frac{1}{8}$ 02 : RC $\frac{1}{4}$ **VCD245, VCD2413****VCD345, VCD3413****VCE345, VCE3413****VCO345, VCO3413****Dimensions**

- If you need dimension graph, please contact FONTAL.