

VC08, 15 Series

Air Operated Valve
Rubber Seal/Sub-base Mounting Type

VCS2408 | VCS2415

2-position, single sided

VCD2408 | VCD2415

2-position, double sided

VCD3408 | VCD3415

3-position, closed center

VCE3408 | VCE3415

3-position, ABR connect

VCO3408 | VCO3415

3-position, PAB connect



Specifications

Model No.	Unit	VCS2408	VCD2408	VCD3408 VCE3408	VCO3408	VCS2415	VCD2415	VCD3415 VCE3415	VCO3415
Fluid		Non-lubricated/lubricated air							
Port size		port 1,2,4: Rc $\frac{3}{8}$ port 3,5 : Rc $\frac{1}{4}$				port 1,2,4: Rc $\frac{1}{2}$ port 3,5 : Rc $\frac{3}{8}$			
Sonic-speed transmission ①	dm 3 /(s·bar)	6.00	5.00	2.80	14.00	12.00			
Critical pressure ratio ②		0.45	0.38	0.35	0.45	0.4			
Effective area ③	mm 2	30	25	14	70	60			
Operating ambient temperature	°C	-5~50 ①							
Operating pressure range	MPa	0~0.8							
Pilot pressure ④	MPa	0.2~0.8						0.25~0.8	
Mass	kg	0.3	0.32	0.48	0.48	0.59	0.67	0.80	0.80

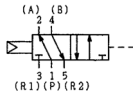


1. When the temperature falls below 5 °C, please provide air dryer to prevent water frozen.
2. Pilot pressure must remain greater than the working pressure. (Pilot pressure \geq Working pressure).
3. The value shown in sonic-speed transmission, critical pressure ratio, effective area, Cv value represent the value of Port 1 -> 4.

VCS2408 — 03

Model No.

VCS2408, VCS2415



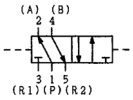
Port size (port 1, 2, 4)

NB : Without sub-base

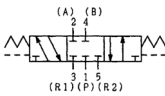
03 : RC $\frac{3}{8}$

04 : RC $\frac{1}{2}$

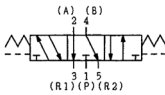
VCD2408, VCD2415



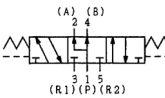
VCD3408, VCD3415



VCE3408, VCE3415



VCO3408, VCO3415



Dimensions

- If you need dimensions graph, please contact FONTAL.