

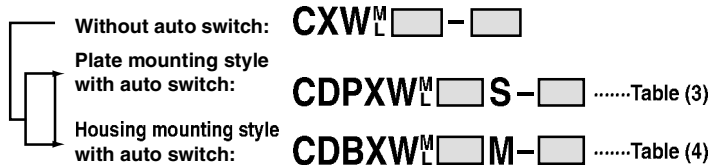
Series CXWM/CXWL

Prior to Use

1. Changing from the non-auto switch specifications to the auto switch specifications
2. Changing mounting style of the auto switch specifications

Series CXW^M_L

1. In Series CXW^M_L, to change from the specification without auto switch to the plate mounting style with auto switch or to the housing mounting style with auto switch, refer to tables (3) and (4) before ordering.



2. In Series CXW^M_L, to change from the plate mounting style with an auto switch to the housing mounting style with an auto switch or vice versa, refer to tables (3) and (4) before ordering.



Table (3) Plate Mounting Style with Auto Switch
(CDPXW^M_L□□-□□) Component Parts for Mounting Switches and No. of Component Parts

Component parts	Material	ø10	ø16	ø20	ø25	ø32
		Assembly model no. for mounting switch ⁽³⁾				
		CDPXW ^M _L 10S-□	CDPXW ^M _L 16S-□	CDPXW ^M _L 20S-□	CDPXW ^M _L 25S-□	CDPXW ^M _L 32S-□
Switch mounting block	Aluminum alloy	1	1	1	1	1
Block mounting screw	Chrome steel/Nickel plated	2	2	2	2	2
Switch mounting screw	Chrome steel/Nickel plated	2	2	2	2	2
Hexagon nut	Carbon steel/Nickel plated	2	2	2	2	2
Magnet	—	1 (2) ⁽²⁾	—	—	—	—
Socket	Brass/Electroless nickel plated	2	—	—	—	—
Plug (M-5P)	Brass/Electroless nickel plated	2	2	2	—	—

Note 1) "□" mark indicates strokes.

Note 2) In the case of ø10, the 25 mm stroke has two magnets that are bonded in the holes on the side of the housing. Those with strokes of 50 mm to 100 mm have one magnet. Those with other bore sizes have a built-in magnet in their housings.

Note 3) For the assembly model no. for mounting switch, order with CDPXWM□□-□□ for Series CXWM and order with CDPXWL□□-□□ for Series CXWL respectively.

Table (4) Housing Mounting Style with Auto Switch
(CDBXW^M_L□□-□□) Component Parts for Mounting Switches and No. of Component Parts

Component parts	Material	ø10	ø16	ø20	ø25	ø32
		Assembly model no. for mounting switch				
		CDBXW ^M _L 10M-□	CDBXW ^M _L 16M-□	CDBXW ^M _L 20M-□	CDBXW ^M _L 25M-□	CDBXW ^M _L 32M-□
Magnet mounting block assembly	Aluminum alloy	1	1	1	1	1
Switch mounting rail	Aluminum alloy	—	1	1	1	1
Spacer	Aluminum alloy/Anodized	2	—	—	—	—
Block mounting screw	Chrome steel/Nickel plated	2	2	2	2	2
Screw for mounting rail	Chrome steel/Nickel plated	—	2	2	2	2
Switch mounting screw	Chrome steel/Nickel plated	2	2	2	2	2
Hexagon nut	Carbon steel/Nickel plated	2	2	2	2	2
Hexagon socket head plug	Chrome steel/Nickel plated	2	2	2	—	—

Note 1) "□" mark indicates strokes.

Note 2) In the case of ø10, CDPXW^M_L10-□ can NOT be changed to CDBXW^M_L10-□. (CXW^M_L10-□ can be changed to CDBXW^M_L10-□)

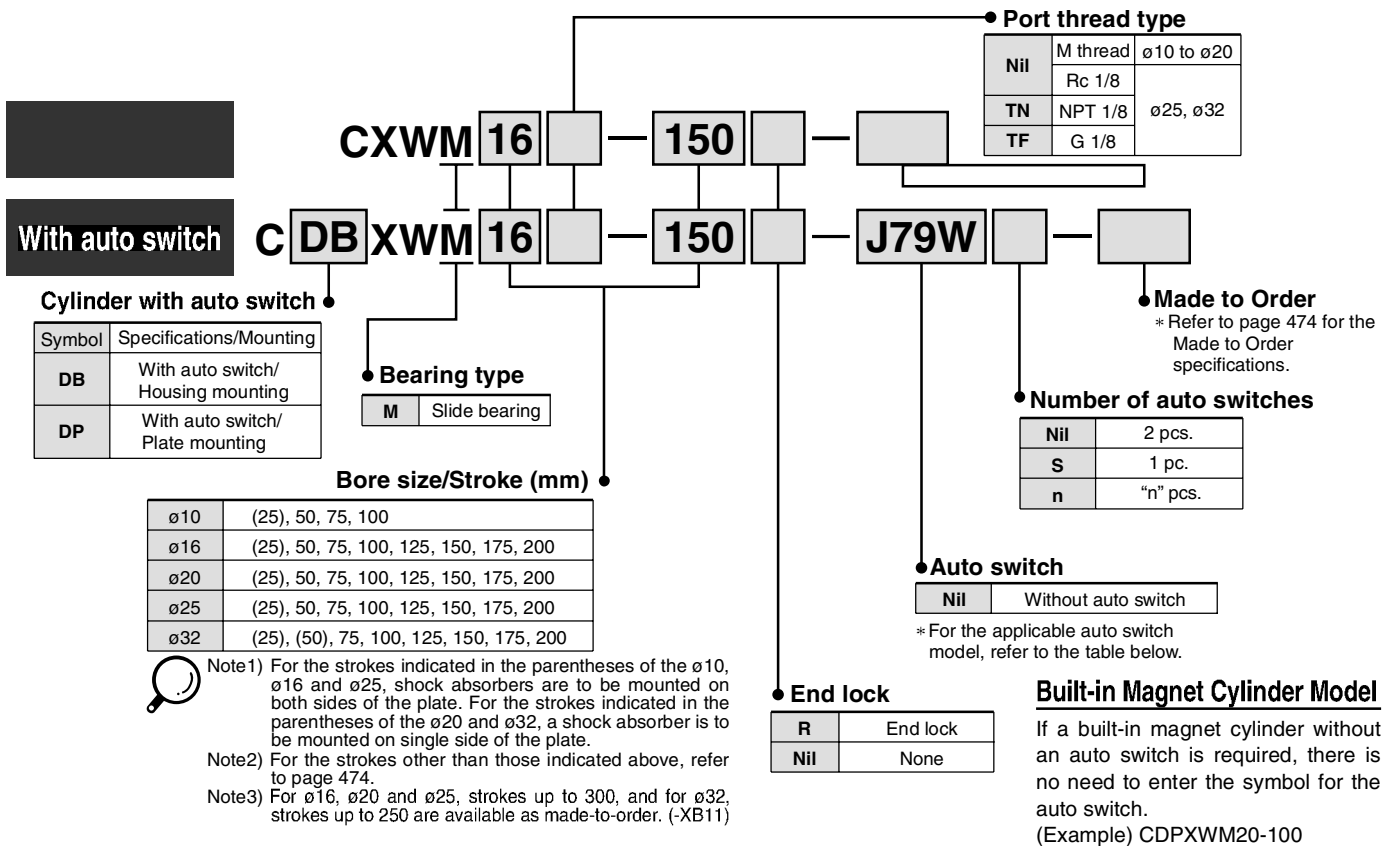
Note 3) For the assembly model no. for mounting switch, order with CDBXWM□□-□□ for Series CXWM and order with CDBXWL□□-□□ for Series CXWL respectively.

Slide Unit: Built-in Shock Absorber Slide Bearing Type

Series CXWM

ø10, ø16, ø20, ø25, ø32

How to Order



Applicable Auto Switch/Refer to pages 1719 to 1827 for further information on auto switches.

Type	Special function	Electrical entry	Indicator light	Wiring (Output)	Load voltage		Rail mounting		Applicable cylinder size		Lead wire length (m)*				Pre-wired connector	Applicable load							
					DC	AC	Perpendicular	In-line	Housing mounting	Plate mounting	0.5 (Nil)	3 (L)	5 (Z)	None (N)									
Solid state switch	-	Grommet	Yes	3-wire (NPN)	24 V	5 V, 12 V	-	F7NV	F79	ø16 ø20 ø25 ø32	ø10 ø16 ø20 ø25 ø32	●	●	○	-	○	IC circuit	Relay, PLC					
				3-wire (PNP)				F7PV	F7P			●	●	○	-	○							
		2-wire		F7BV				J79	●			●	○	-	○	-							
		J79C		-				●	●			○	-	○	-								
	Diagnostic indication (2-color indication) Water resistant (2-color indication) With diagnostic output (2-color indication)	Grommet	Yes	3-wire (NPN)	24 V	5 V, 12 V	-	F7NVW	F79W			●	●	○	-	○	○		○	IC circuit			
				3-wire (PNP)				-	F7PW			●	●	○	-	○	○		-				
		2-wire		F7BWV				J79W	●			●	○	-	○	○	-		-				
		F7BAV		F7BA				-	●			●	○	-	○	○	-		-				
Reed switch	-	Grommet	Yes	3-wire (NPN equivalent)	24 V	5 V	-	-	A76H	ø16 ø20 ø25 ø32	ø10 ø16 ø20 ø25 ø32	●	●	-	-	-	IC circuit	-					
				-				A72	A72H			●	●	-	-	-	-						
		2-wire		12 V				100 V	A73			A73H	●	●	-	-	-	-					
		5 V, 12 V		100 V or less				A80	A80H			●	●	-	-	-	IC circuit						
	Connector	No	Yes	No	12 V	24 V	-	-	A73C			-	ø16 ø20 ø25 ø32	ø10 ø16 ø20 ø25 ø32	●	●	●	●	-	-	-		
					5 V, 12 V				24 V or less			A80C			-	●	●	●	●	-	-	IC circuit	
					3-wire (NPN equivalent)				-			5 V			-	-	-	-	-	-	-	-	-
					2-wire				24 V			12 V			100 V	-	E76A	-	-	-	-	-	-
Grommet	No	Yes	No	12 V	24 V	-	-	-	E73A	ø10	-	●	●	-	-	-	-	Relay, PLC					
				5 V, 12 V				100 V or less	E80A			-	-	-	-	-	-	IC circuit					
				3-wire (NPN equivalent)				-	5 V			-	-	-	-	-	-	-	-				
				2-wire				24 V	12 V			100 V	-	-	-	-	-	-	-				

* Lead wire length symbols: 0.5 m Nil (Example) F79W
3 m L (Example) F79WL
5 m Z (Example) F79WZ
None N (Example) J79CN

* Solid state auto switches marked with "○" are produced upon receipt of order.
** It is impossible to mount solid state switches to the housing mounting ø10.

- Since there are other applicable auto switches than listed, refer to page 517 for details.
- For details about auto switches with pre-wired connector, refer to pages 1784 and 1785.
- * Auto switches are shipped together (not assembled).

Gentle Automatic Solution Sdn Bhd

Tel :603-80237743 Fax :603-80239743 Email :sales@gentle.com.my http://www.gentle.com.my

Series CXWM

Built-in shock absorber

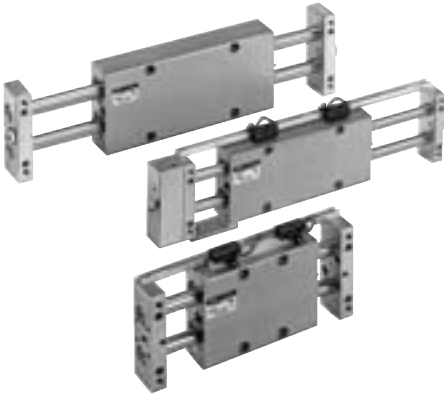
This is a built-in shock absorber style in which the shock absorber is enclosed in the housing. Compared to Series CX2 with shock absorber, this style achieves space savings in the longitudinal direction (except 25 mm stroke).

Dramatically reduced installation labor

The machining precision required for positioning during the installation of the cylinder has been reduced through the adoption of a special pin hole machining process, thus decreasing the amount of labor involved in adjustment.

Provided with an end lock mechanism

An end lock is also available, which maintains the cylinder's original position even if the air supply is interrupted.



Made to Order Specifications

(For details, refer to pages 1851 to 2021.)

Symbol	Specifications
—XB11	Long stroke type
—XB13	Low speed cylinder (5 to 50 mm/s)
—XC22	Fluororubber seal
—X146	Hollow piston rod
—X138	Adjustable stroke
—X168	Helical insert thread
—X169	2 built-in magnets

Standard Stroke

Model	Standard stroke (mm)							
	25	50	75	100	125	150	175	200
CXWM10-□□	(1) (*) ●	●	●	—	—	—	—	—
CXWM16-□□	(1) (*) ●	●	●	●	●	●	●	●
CXWM20-□□	(2) (*) ●	●	●	●	●	●	●	●
CXWM25-□□	(1) (*) ●	●	●	●	●	●	●	●
CXWM32-□□	(2) (*) ●	(2) (*) ●	●	●	●	●	●	●



Note 1) The strokes marked with "(*)" has an absorber of double side plate mounting style.
 Note 2) The strokes marked with "(*)" has an absorber of single side plate mounting style.

Specifications

Type	Non-lube	
Fluid	Air	
Proof pressure	1.5 MPa	
Max. operating pressure	1.0 MPa	
Min. operating pressure	CXWM10/16	0.15 MPa
	CXWM20/25/32	0.1 MPa
Ambient & fluid temperature	-10 to 60°C (No freezing)	
Piston speed (Non-lube)	30 to 500 mm/s	
Cushion	Shock absorber	
Stroke adjustable range	Standard stroke: ±2 mm	
Accessory (Option)	Straight knock pin (2 pcs.), Adjusting bolt* (-X138)	

* "-X138" has a stroke adjustable range of -12.5 mm on one side.

Maximum Load Mass/Non-rotating Accuracy/Maximum Holding Force

Model	CXWM10	CXWM16	CXWM20	CXWM25	CXWM32
Maximum load mass*	1 kg	4 kg	5 kg	6 kg	10 kg
Non-rotating accuracy (Deflection of a piston) (rod is not included.)	±0.09°	±0.03°	±0.03°	±0.02°	±0.01°
Maximum holding force (End lock model)	39.2 N	98.1 N	147.1 N	245.2 N	392.3 N

* Place the center of gravity of the load and center of the slide unit close during operation. If they are placed far apart from each other, please consult with SMC.

Shock Absorber Specifications

Shock absorber (1)	RB0805-X552	RB0805	RB1006-X552	RB1006	RB1411-X552	RB1411
Applicable slide unit	CXWM10/16-□□		CXWM20/25-□□		CXWM32-□□	
Maximum energy absorption (J)	0.98		3.92		14.7	
Stroke absorption (mm)	5		6		11	
Max. collision speed (m/sec)	0.05 to 5					
Max. operating frequency (cycle/min) ⁽²⁾	80		70		45	
Max. allowable thrust (N)	147		353		667	
Ambient temperature range (°C)	-10 to 80					
Spring force (N)	Extended		4.22		6.86	
	Retracted		6.18		15.30	
Mass (g)	15		25		65	



Note 1) "-X552" is an exclusive shock absorber installed in the housing, and is the screw not attached specification of the outer part of the outer tube. The shock absorber plate mounting style of 25 and 50 strokes have the screw attached specification.

Note 2) It denotes the values at the maximum energy absorption per one cycle. Therefore, the operating frequency can be increased according to the energy absorption.

* The shock absorber service life is different from that of the cylinder depending on the operating conditions. Refer to the Series RB Specific Product Precautions for the replacement period.

Theoretical Output

(N)

Model	Rod size (mm)	Piston area (mm ²)	Operating pressure (MPa)							
			0.2	0.3	0.4	0.5	0.6	0.7	0.8	0.9
CXWM10-□□	6	101	20	30	40	51	61	71	81	91
CXWM16-□□	10	245	49	74	98	123	147	172	196	221
CXWM20-□□	12	402	80	121	161	201	241	281	322	362
CXWM25-□□	14	597	119	179	239	299	358	418	478	537
CXWM32-□□	20	980	196	294	392	490	588	686	784	882

Note) Theoretical output (N) = Pressure (MPa) x Piston area (mm²)

Mass (kg)

Model	Stroke (mm)							
	25	50	75	100	125	150	175	200
CXWM10	0.28	0.35	0.42	0.49	–	–	–	–
CXWM16	0.46	0.59	0.72	0.85	0.98	1.11	1.24	1.37
CXWM20	0.69	0.87	1.03	1.22	1.40	1.58	1.75	1.93
CXWM25	0.95	1.17	1.38	1.60	1.82	2.03	2.31	2.47
CXWM32	2.01	2.38	2.77	3.16	3.56	3.94	4.34	4.72

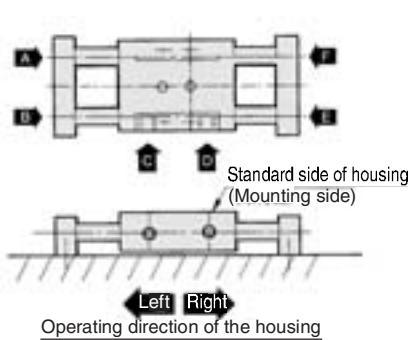
Additional Mass with End Lock (CXWM□-□R) (kg)

Applicable model	Additional mass
CXWM10	0.08
CXWM16	0.14
CXWM20	0.15
CXWM25	0.20
CXWM32	0.43

Accessory
Straight Knock Pin (Option)

Operating Direction with Different Pressure Ports

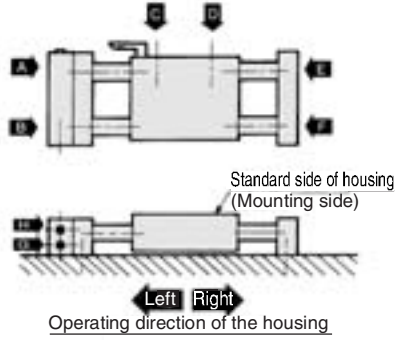
Operating direction of housing when the plate is fixed



Pressure port	A	B	C	D	E	F
Operating direction	Right	Left	Left	Right	Left	Right

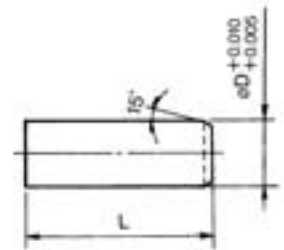
* There are 9 possible reciprocating piping methods.

With end lock (CXWM-□R)
Operating direction of housing when the plate is fixed



Pressure port	A	B	C	D	E	F	G	H
Operating direction	Right	Left	Left	Right	Right	Left	Left	Right

* There are 16 possible reciprocating piping methods.



(mm)

Model	L	øD	Model*
CXWM10	10	4	MS4-10
CXWM16	10	5	MS5-10
CXWM20	15	6	MS6-15
CXWM25	15	6	MS6-15
CXWM32	20	8	MS8-20

* Manufactured by Misumi Trading Ltd.

Deflection of Piston Rod by Center Loading (Reference)

When center loading is added to the center of the housing



(mm)

Model	Stroke	
	Load (N)	
	100	200
CXWM10	9.81	0.07
CXWM16	39.2	0.05
CXWM20	49	0.04
CXWM25	58.8	0.02
CXWM32	98.1	0.02

When center loading is added to the center of the plate



(mm)

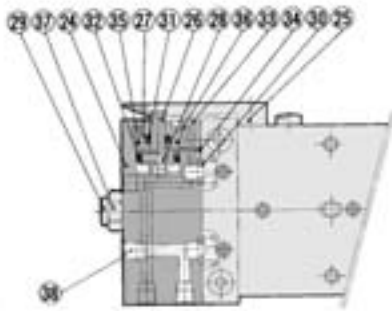
Model	Stroke				
	Load (N)	50	100	150	200
CXWM10	2.94	0.06	0.30	–	–
CXWM16	4.90	0.03	0.10	0.25	0.45
CXWM20	7.84	0.03	0.09	0.18	0.35
CXWM25	9.81	0.03	0.09	0.16	0.25
CXWM32	29.42	0.02	0.05	0.10	0.15

Note) The values denote the total width of the deflections in the upward/downward direction.

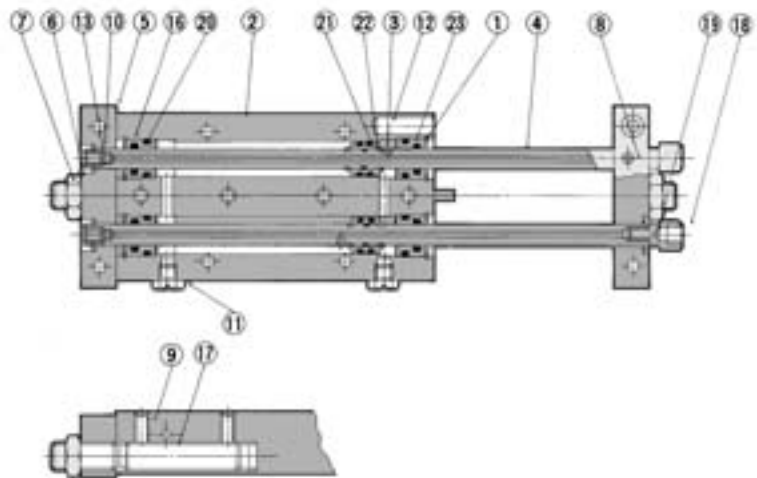
Series CXWM

Construction: $\varnothing 10$, $\varnothing 16$, $\varnothing 25$

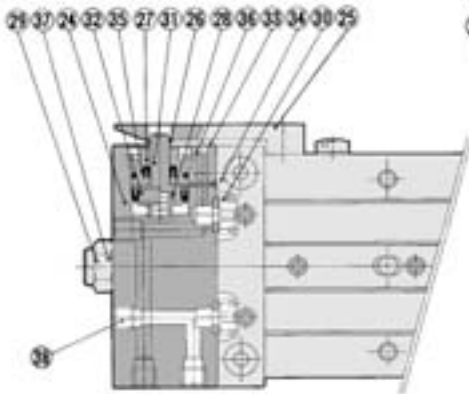
CXWM10



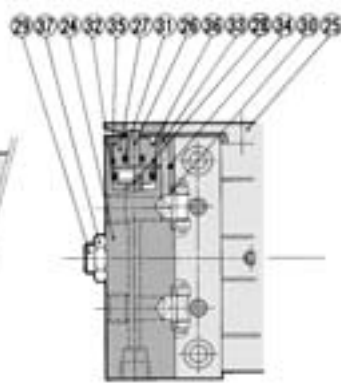
With end lock



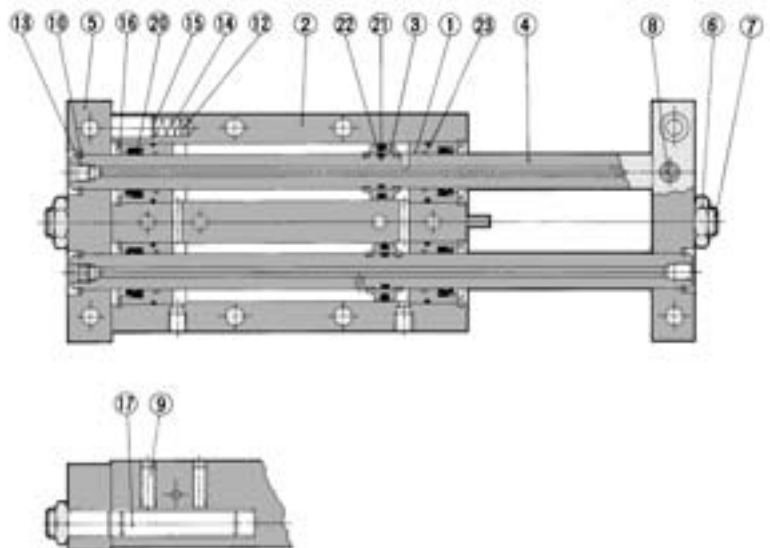
CXWM16, 25



$\varnothing 16$ /With end lock



$\varnothing 25$ /With end lock



Construction: $\varnothing 10$, $\varnothing 16$, $\varnothing 25$

Component Parts

No.	Description	Material	Note
1	Rod cover	Aluminum bearing alloy	
2	Housing	Aluminum alloy	Hard anodized
3	Piston	Aluminum alloy	Chromated
4	Piston rod	Carbon steel piping for machine constructions	Hard chrome plated
5	Plate	Aluminum alloy	Hard anodized
6	Lock nut	Carbon steel	Nickel plated
7	Adjusting bolt	Chromium steel	Nickel plated
8	Set screw (For fixing rods)	Chromium steel	Nickel plated
9	Set screw (For fixing shock absorbers)	Stainless steel	
10	Retaining ring	Carbon tool steel	Nickel plated
11	Plug	Brass	Nickel plated
12	Magnet	—	$\varnothing 5$
13	Set screw for seal	Chromium steel	Nickel plated
14	Spring	Stainless steel	
15	Type CR retaining ring	Carbon tool steel	
16	Round type R retaining ring	Carbon tool steel	Nickel plated
17	Shock absorber	—	{RB0805-X552 or RB1006-X552}
18	Socket	Brass	Electroless nickel plated
19	Gasket	NBR	
20	Rod seal	NBR	
21	Piston seal	NBR	
22	Piston gasket	NBR	
23	Cylinder tube gasket	NBR	

**Replacement Parts: Seal Kit
Cylinder Body**

Model	Kit no.	Contents
CXWM10	CXWM10-PS	Set of nos. above ⑳, ㉑, ㉒
CXWM16	CXWM16-PS	
CXWM25	CXWM25-PS	

- * Seal kit includes ㉑, ㉑, ㉒. Order the seal kit, based on each bore size. (The piston gasket ㉒ is not replaceable.)
- * Since the seal kit does not include a grease pack, order it separately.
Grease pack part no.: GR-S-010 (10 g)

Component Parts: With End Lock

No.	Description	Material	Note
24	Locking body	Aluminum alloy	Hard anodized
25	Lock finger	Alloy tool steel	Nickel plated after quenched
26	Lock piston	Carbon tool steel	Electroless nickel plated after quenched
27	Rod cover	Aluminum alloy	
28	Return spring	Spring steel	Zinc chromated
29	Adjusting bolt	Chromium steel	Nickel plated
30	Body gasket	NBR	
31	Rod seal	NBR	
32	Piston seal	NBR	
33	Steel ball	High carbon chrome bearing steel	
34	Steel ball	High carbon chrome bearing steel	
35	O-ring	NBR	
36	Round type R retaining ring	Carbon tool steel	Nickel plated
37	Lock nut	Carbon steel	Nickel plated
38	Plug	Chromium steel	Nickel plated

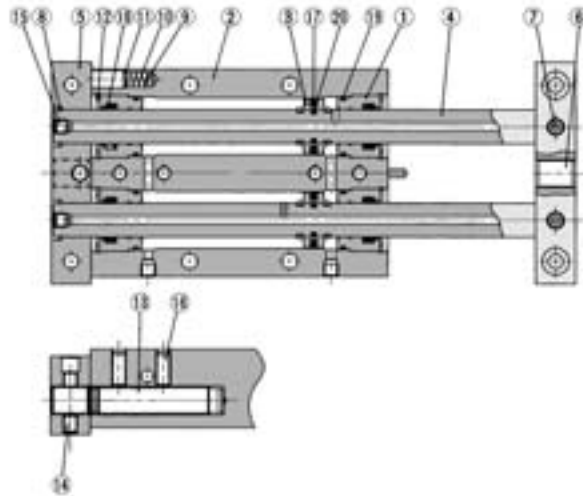
**Replacement Parts: Seal Kit
End Lock**

Model	Kit no.	Contents
CXWM10	CXWM10R-PS	Set of nos. above ㉓, ㉔, ㉕, ㉖
CXWM16	CXWM16R-PS	
CXWM25	CXWM25R-PS	

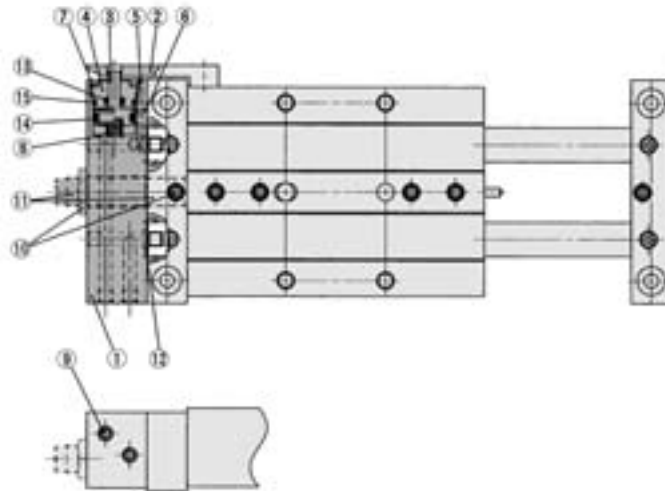
- * Seal kit includes ㉓, ㉔, ㉕, ㉖. Order the seal kit, based on each bore size.
- * Since the seal kit does not include a grease pack, order it separately.
Grease pack part no.: GR-S-010 (10 g)

Series CXWM

Construction: $\varnothing 20$, $\varnothing 32$



With end lock



Component Parts

No.	Description	Material	Note
1	Rod cover	Aluminum bearing alloy	—
2	Housing	Aluminum alloy	Hard anodized
3	Piston	Aluminum alloy	Chromated
4	Piston rod	Carbon steel for machines	Hard chrome plated
5	Plate	Aluminum alloy	Hard anodized
6	Adjusting bolt	Chromium steel	Nickel plated
7	Hexagon socket head set screw	Chromium steel	Nickel plated
8	Retaining ring	Tool steel	Nickel plated
9	Magnet	—	
10	Spring	Stainless steel	
11	Type CR retaining ring	Carbon tool steel	
12	Round type R retaining ring	Carbon tool steel	Nickel plated
13	Shock absorber	—	RB1006-X552, RB1411-X552
14	Hexagon socket head set screw	Chromium steel	Nickel plated
15	Hexagon socket head plug	Chromium steel	Nickel plated
16	Hexagon socket head set screw	Chromium steel	Nickel plated
17	Piston seal	NBR	
18	Rod seal	NBR	
19	Cylinder tube gasket	NBR	
20	Piston gasket	NBR	

Replacement Parts: Seal Kit Cylinder Body

Model	Kit no.	Contents
CXWM20	CXWM20-PS	Set of nos. above (17), (18), (19)
CXWM32	CXWM32-PS	

* Seal kit includes (17), (18), (19). Order the seal kit, based on each bore size. (The piston gasket (20) is not replaceable.)

* Since the seal kit does not include a grease pack, order it separately.

Grease pack part no.: GR-S-010 (10 g)

Component Parts: With End Lock

No.	Description	Material	Note
1	Locking body	Aluminum alloy	Hard anodized
2	Lock finger	Alloy tool steel	Nickel plated after quenched
3	Lock piston	Tool steel	Electroless nickel plated after quenched
4	Rod cover	Aluminum bearing alloy	
5	Steel ball	High carbon chrome bearing steel	
6	Steel ball	High carbon chrome bearing steel	
7	Round type R retaining ring	Carbon tool steel	Nickel plated
8	Return spring	Spring steel	Zinc chromated
9	Plug	Chromium steel	Nickel plated
Note) 10	(50, 75 to (200) ST Hexagon socket head set screw	Chromium steel	Nickel plated
(25), 50 ST	Hexagon nut	Carbon steel	Nickel plated
Note) 11	(50, 75 to (200) ST Adjusting bolt	Chromium steel	Nickel plated
(25), 50 ST	Shock absorber	—	RB1006 or RB1411
12	Body gasket	NBR	
13	Rod seal	NBR	
14	Piston seal	NBR	
15	O-ring	NBR	

Note) The strokes indicated in the parentheses are of CXWM20, and CXWM32 includes the strokes indicated in the parentheses.

Replacement Parts: Seal Kit End Lock

Model	Kit no.	Contents
CXWM20	CXWM20R-PS	Set of nos. above (12), (13), (14), (15)
CXWM32	CXWM32R-PS	

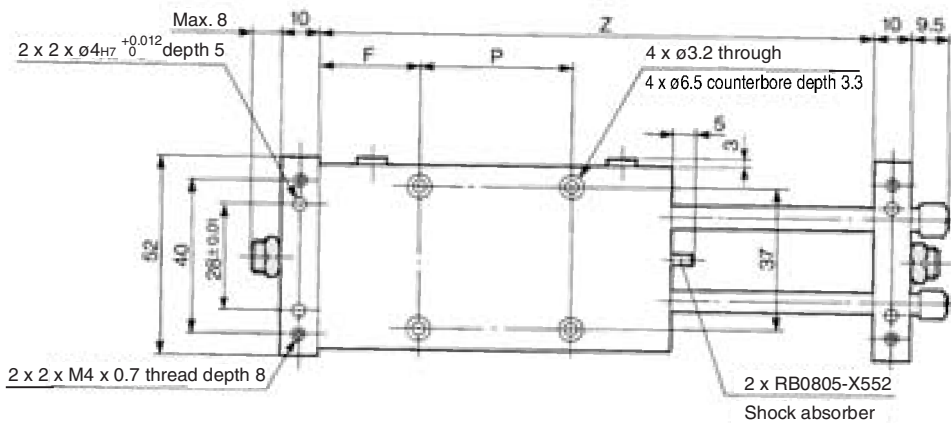
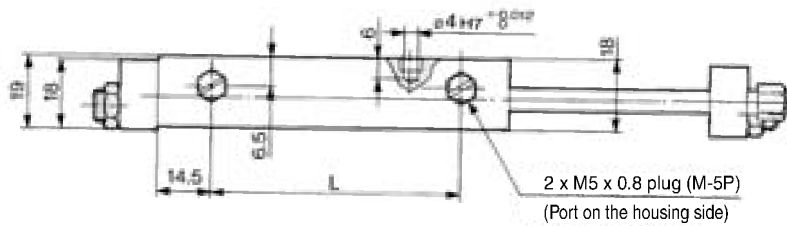
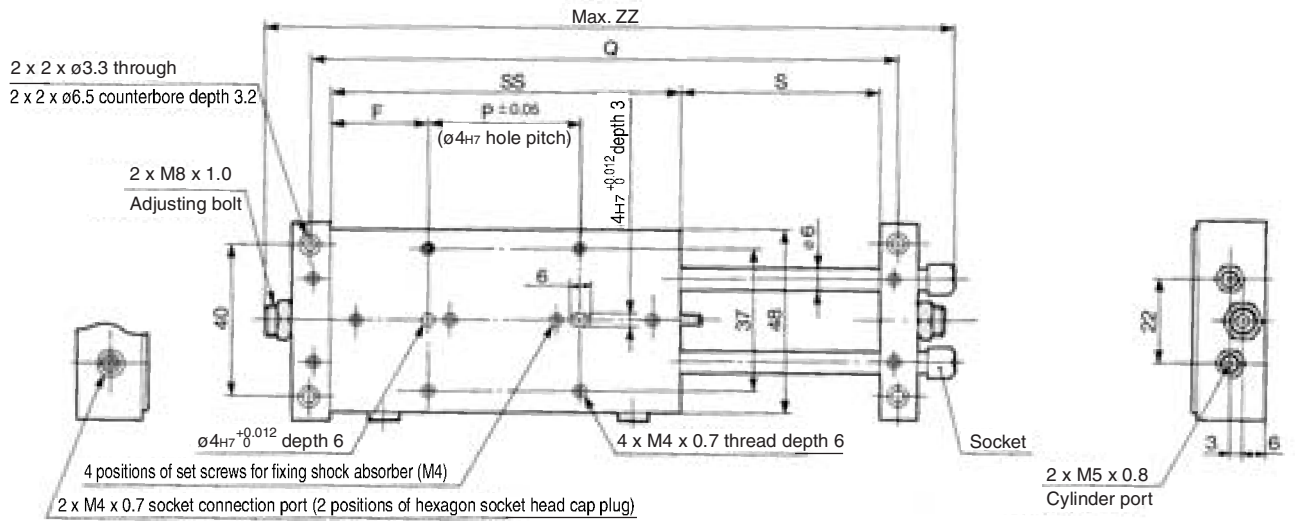
* Seal kit includes (12), (13), (14), (15). Order the seal kit, based on each bore size.

* Since the seal kit does not include a grease pack, order it separately.

Grease pack part no.: GR-S-010 (10 g)

Slide Unit: Built-in Shock Absorber
Slide Bearing Type Series CXWM

ø10 Basic Type: CXWM10-Stroke/50 to 100



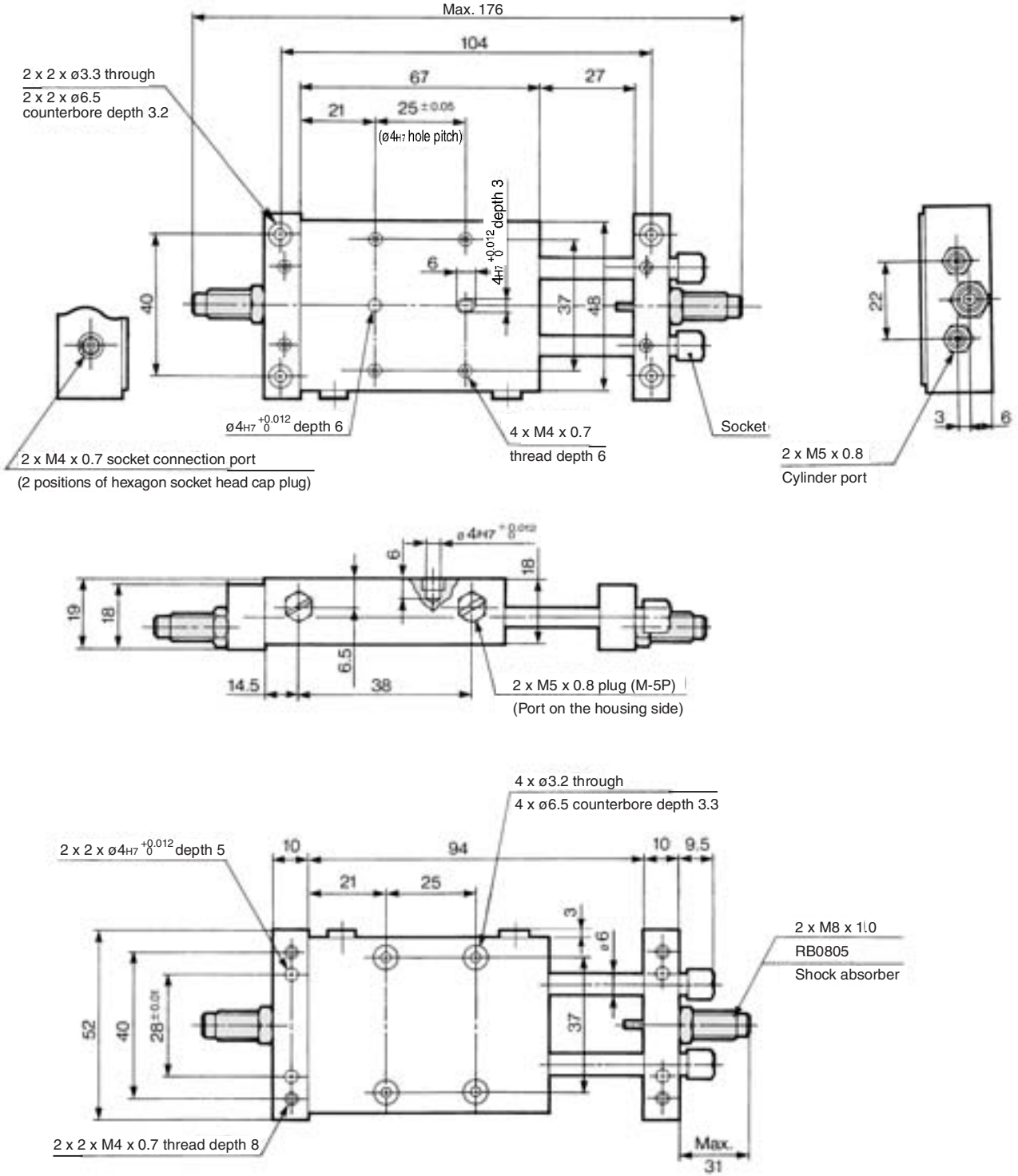
Note) For 25 stroke, the shock absorber is mounted on a plate. For dimensions of the 25 stroke, refer to page 480.

Model	F	L	P	Q	S	SS	Z	ZZ
CXWM10-50	26	63	40	154	52	92	144	181.5
CXWM10-75	26	88	65	204	77	117	194	231.5
CXWM10-100	26	113	90	254	102	142	244	281.5

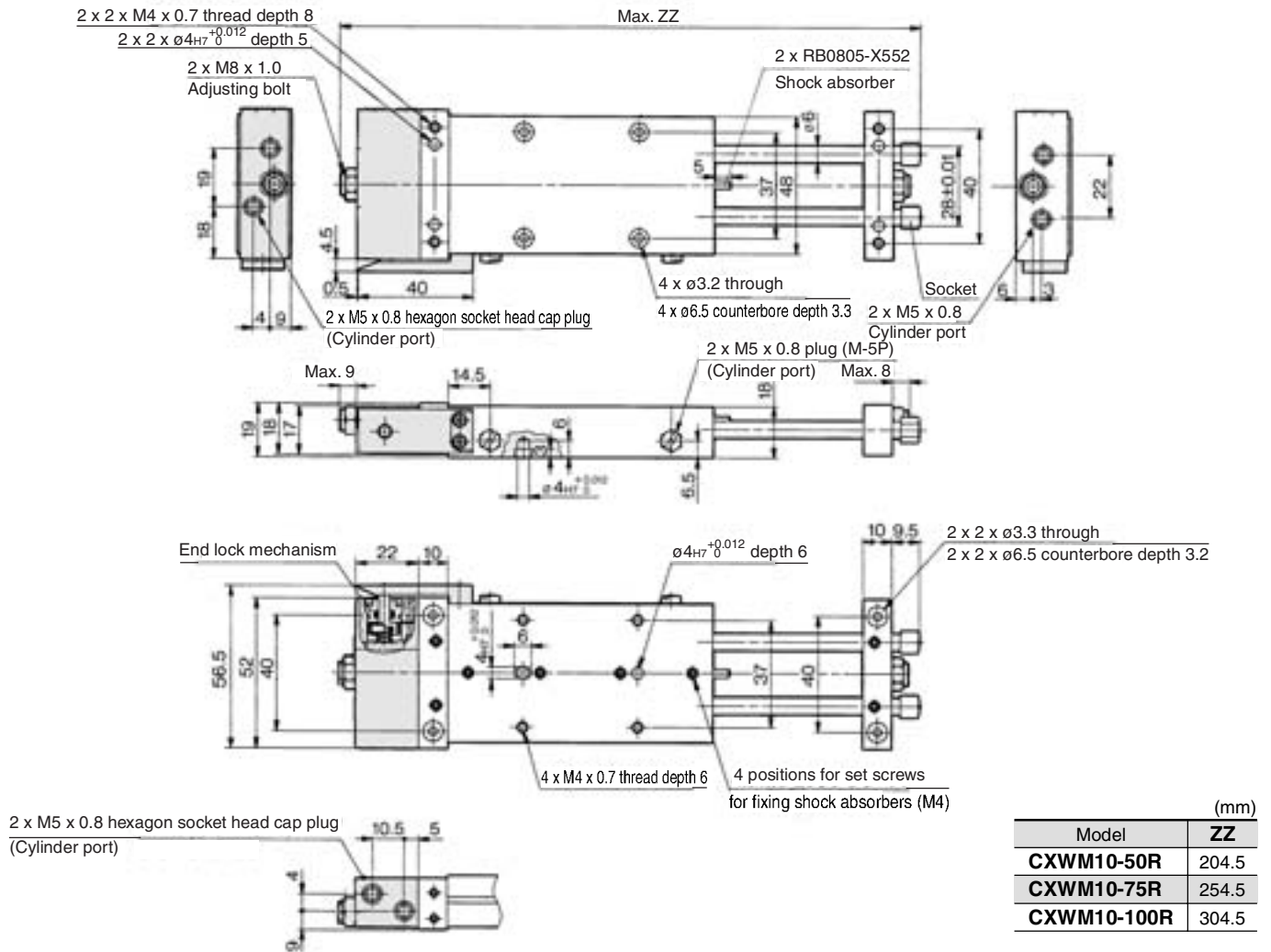
(mm)

Series CXWM

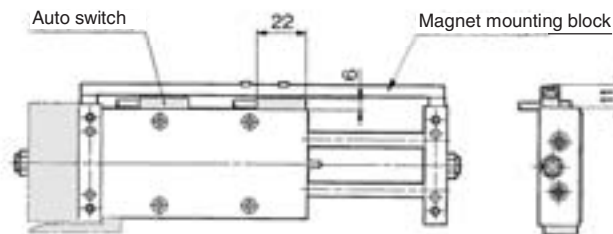
ø10 Basic Type: CXWM10-25 stroke



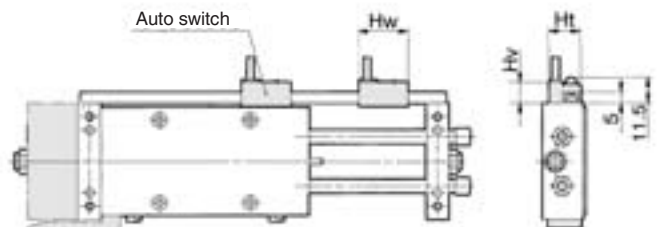
ø10 With End Lock: CXWM10-Stroke/50 to 100 R



**Housing mounting style with auto switch
CDBXWM10-Stroke, CDBXWM10-Stroke R**



**Plate mounting style with auto switch
CDPXWM10-Stroke, CDPXWM10-Stroke R**



Note 1) The dimensions show D-E7□A and D-E80A.
Note 2) For 25 stroke, the shock absorber is mounted on a single side of the plate. For dimensions of the 25 stroke, refer to page 482.

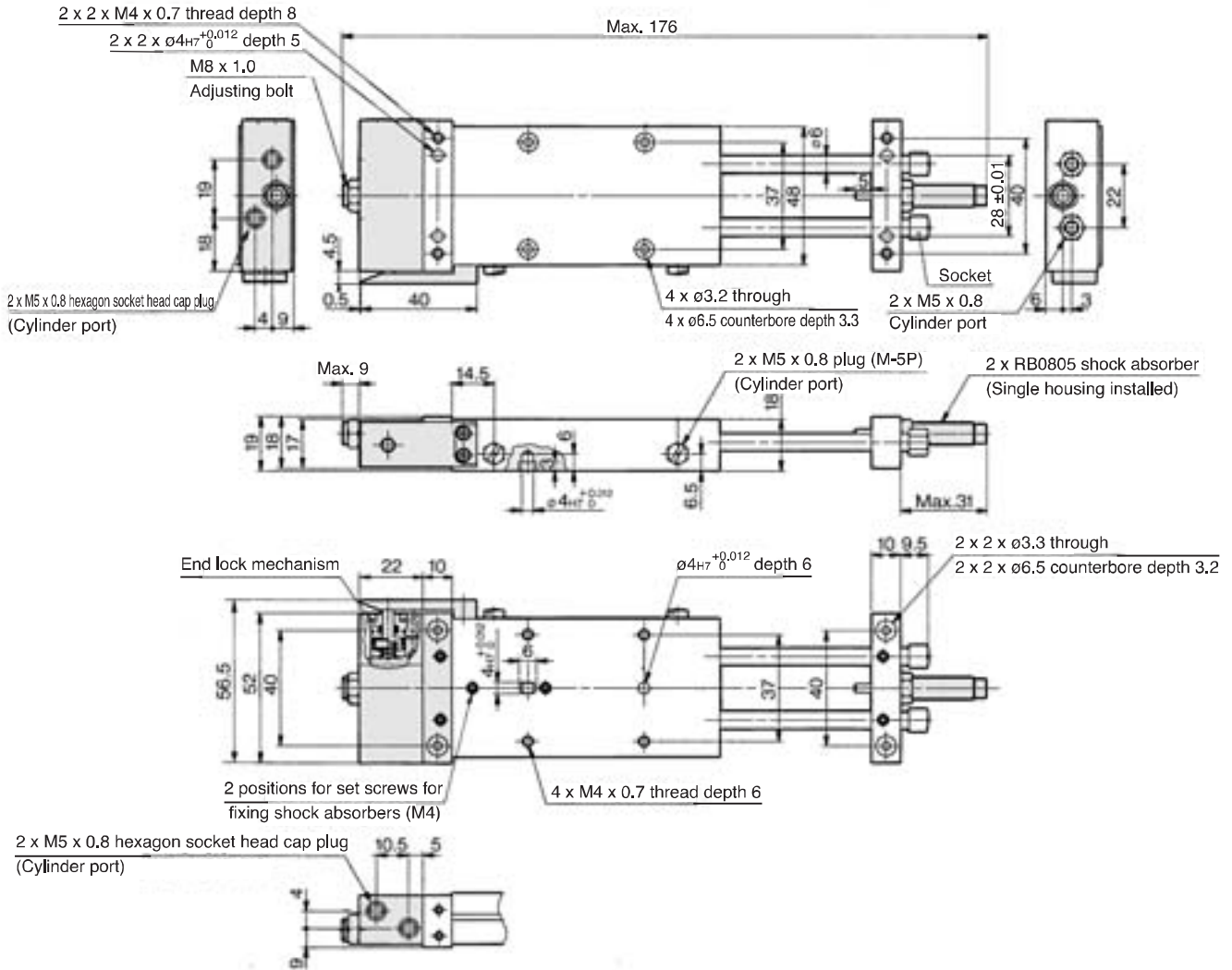
Note 1) The dimensions show D-A7 and D-A8. (mm)

Auto switch model	Hw	Ht	Hv
D-A7□, D-A80	23	15	10.5
D-F7□, D-J79, D-J79W, D-F7□W, D-F79F, D-F7BAL, D-F7NTL	23	15	10
D-A7□H, D-A80H	22	15	9
D-A73C, D-A80C	23	17.5	17.5
D-F7□V, D-F7□WV, D-F7BAV	23	15	14
D-J79C	24	17.5	16

Note 2) For 25 stroke, the shock absorber is mounted on a single side of the plate. For dimensions of 25 stroke, refer to page 482.

Series CXWM

ø10 With End Lock: CXWM10-25 Stroke R



Housing mounting style with auto switch CDBXWM10-25, CDBXWM10-25R

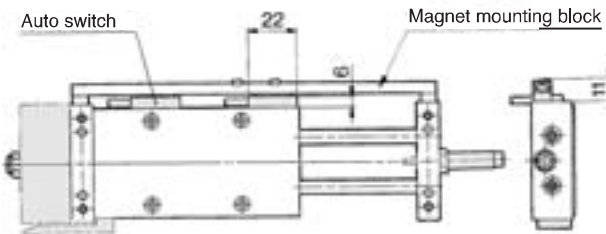
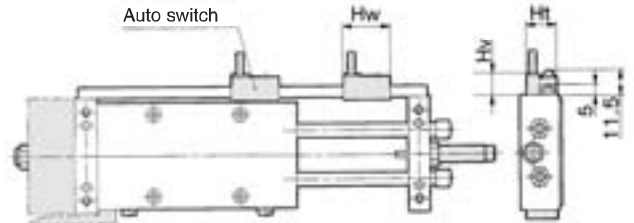


Plate mounting style with auto switch CDPXWM10-25, CDPXWM10-25R



Note 1) The dimensions show D-E7□A and D-E80A.
 Note 2) 2 magnets for auto switches are equipped to the magnet mounting block.

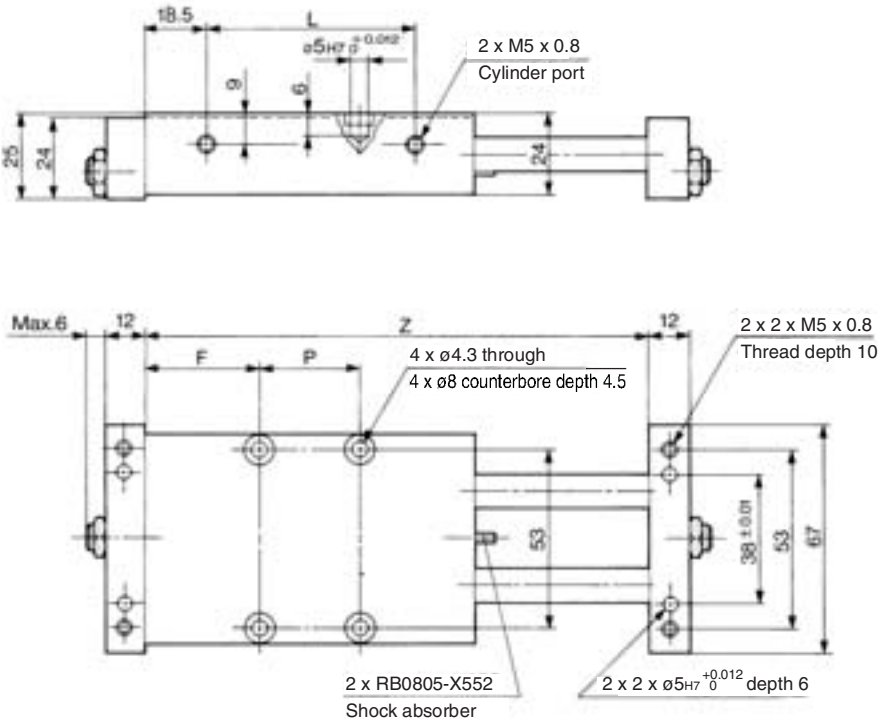
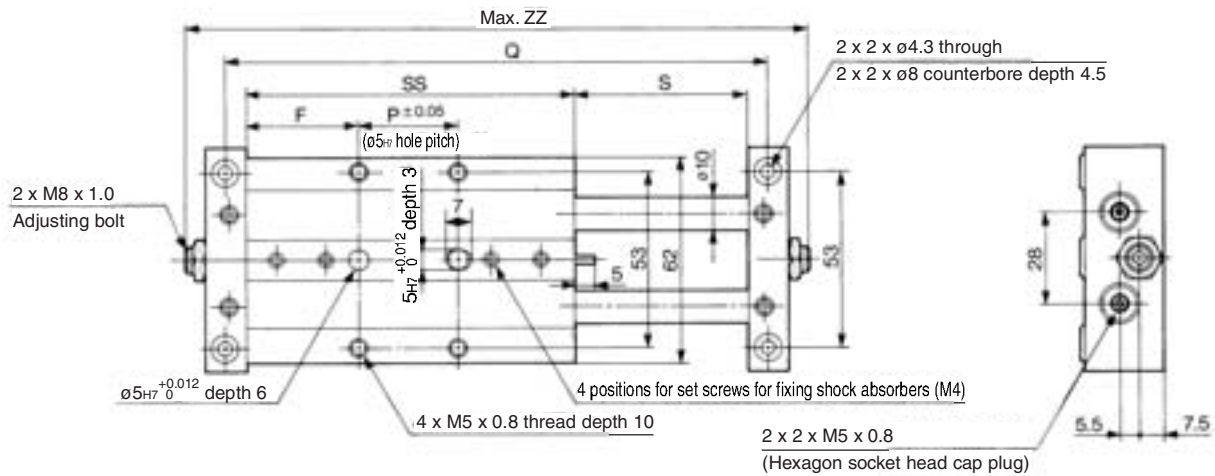
Note 1) The dimensions show D-A7 and D-A8. (mm)

Auto switch model	Hw	Ht	Hv
D-A7□, D-A80	23	15	10.5
D-F7□, D-J79, D-J79W, D-F7□W, D-F79F, D-F7BAL, D-F7NTL	23	15	10
D-A7□H, D-A80H	22	15	9
D-A73C, D-A80C	23	17.5	17.5
D-F7□V, D-F7□WV, D-F7BAV	23	15	14
D-J79C	24	17.5	16

Note 2) 2 magnets for auto switches are installed in the housing.

Slide Unit: Built-in Shock Absorber
Slide Bearing Type Series CXWM

ø16 Basic Type: CXWM16-Stroke/50 to 200



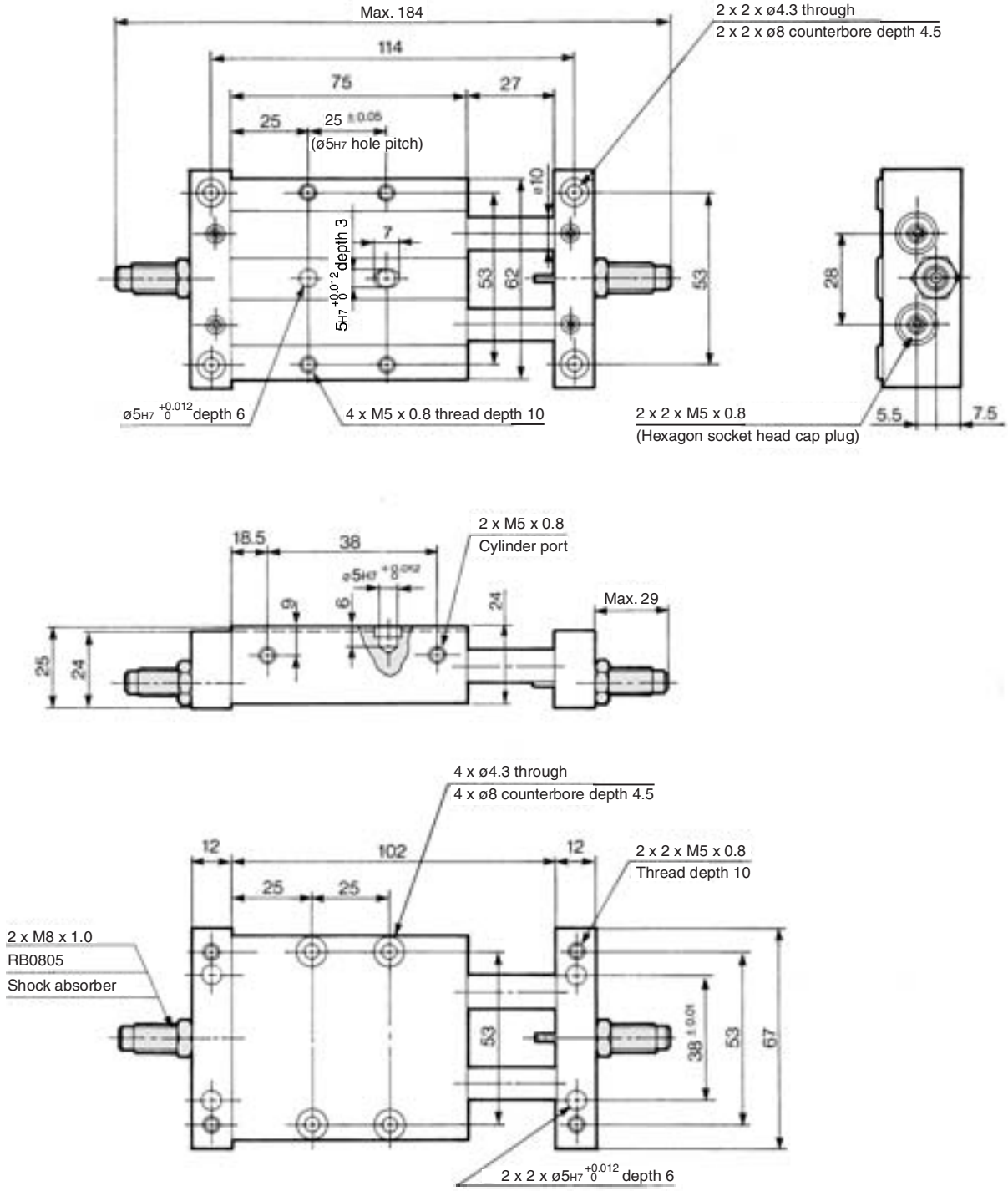
Model	F	L	P	Q	S	SS	Z	ZZ
CXWM16-50	35	63	30	164	52	100	152	188
CXWM16-75	32.5	88	60	214	77	125	202	238
CXWM16-100	37.5	113	75	264	102	150	252	288
CXWM16-125	42.5	138	90	314	127	175	302	338
CXWM16-150	55	163	90	364	152	200	352	388
CXWM16-175	67.5	188	90	414	177	225	402	438
CXWM16-200	80	213	90	464	202	250	452	488



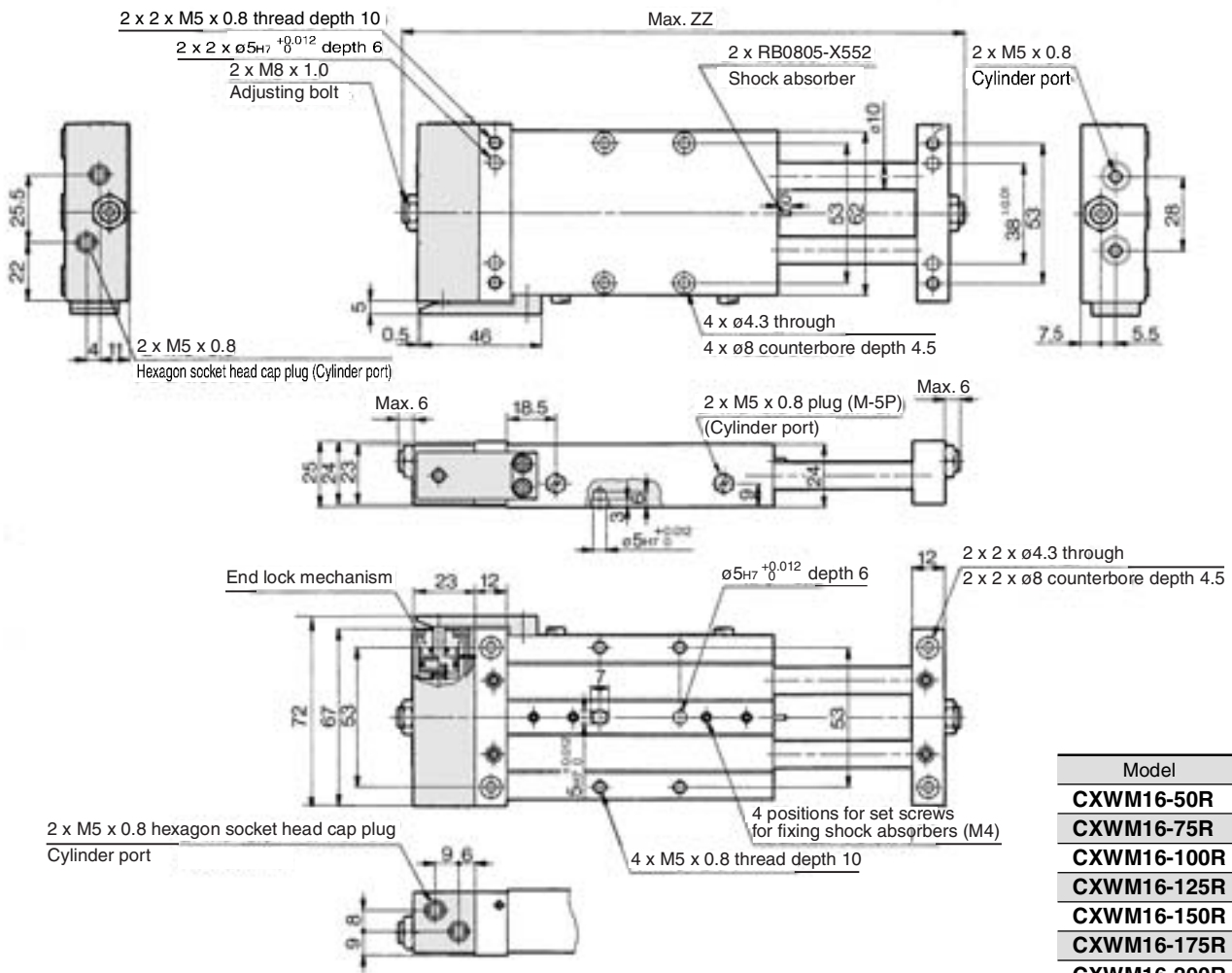
Note) For 25 stroke, the shock absorber is mounted on a plate.
Refer to page 484 for the dimensions of the 25 stroke.

Series CXWM

ø16 Basic Type: CXWM16-25 stroke

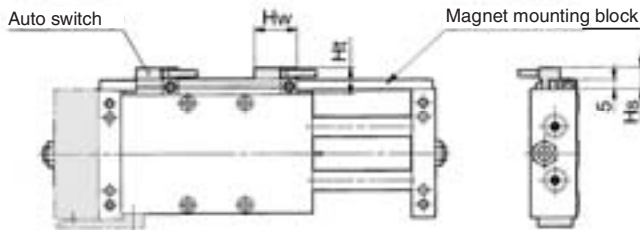


ø16 With End Lock: CXWM16-Stroke/50 to 200 R



Model	(mm) ZZ
CXWM16-50R	211
CXWM16-75R	261
CXWM16-100R	311
CXWM16-125R	361
CXWM16-150R	411
CXWM16-175R	461
CXWM16-200R	511

Housing mounting style with auto switch
CDBXWM16-Stroke , **CDBXWM16-Stroke R**

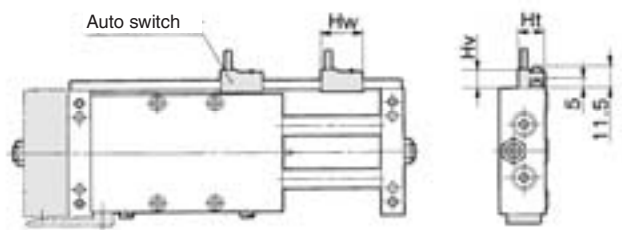


Note 1) The dimensions show D-A7 and D-A8. (mm)

Auto switch model	Hw	Hs	Ht
D-A7□, D-A80	23	12.5	15
D-F7□, D-J79, D-J79W, D-F7□W, D-F79F, D-F7BAL, D-F7NTL	23	12.5	15
D-A7□H, D-A80H	22	12.5	15
D-A73C, D-A80C	23	15	17.5
D-F7□V, D-F7□WV, D-F7BAV	23	12.5	15
D-J79C	24	15	17.5
D-F7LF	30	12.5	15

Note 2) For 25 stroke, the shock absorber is mounted on a single side of the plate. For dimensions of 25 stroke, refer to page 486.

Plate mounting style with auto switch
CDPXWM16-Stroke , **CDPXWM16-Stroke R**



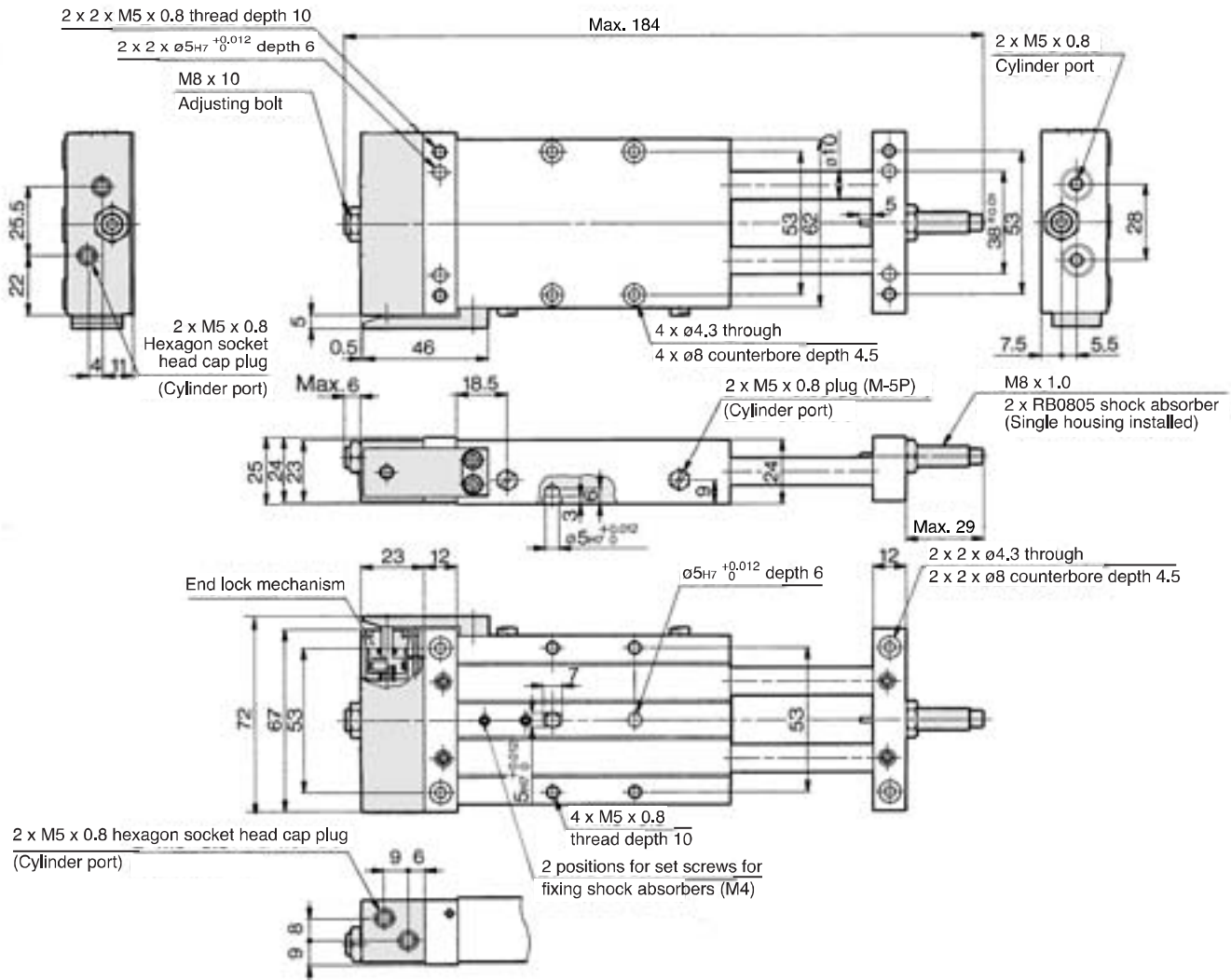
Note 1) The dimensions show D-A7 and D-A8. (mm)

Auto switch model	Hw	Ht	Hv
D-A7□, D-A80	23	15	10.5
D-F7□, D-J79, D-J79W, D-F7□W, D-F79F, D-F7BAL, D-F7NTL	23	15	10
D-A7□H, D-A80H	22	15	9
D-A73C, D-A80C	23	17.5	17.5
D-F7□V, D-F7□WV, D-F7BAV	23	15	14
D-J79C	24	17.5	16

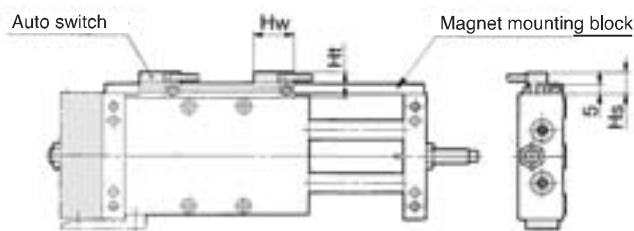
Note 2) For 25 stroke, the shock absorber is mounted on a single side of the plate. For dimensions of 25 stroke, refer to page 486.

Series CXWM

ø16 With End Lock: CXWM16-25 stroke|R



Housing mounting style with auto switch CDBXWM16-25, CDBXWM16-25R

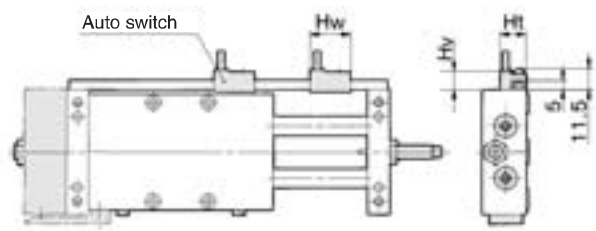


Note 1) The dimensions show D-A7 and D-A8. (mm)

Auto switch model	Hw	Hs	Ht
D-A7□, D-A80	23	12.5	15
D-F7□, D-J79, D-J79W, D-F7□W, D-F79F, D-F7BAL, D-F7NTL	23	12.5	15
D-A7□H, D-A80H	22	12.5	15
D-A73C, D-A80C	23	15	17.5
D-F7□V, D-F7□WV, D-F7BAV	23	12.5	15
D-J79C	24	15	17.5
D-F7LF	30	12.5	15

Note 2) 2 magnets for auto switches are equipped to the magnet mounting block.

Plate mounting style with auto switch CDPXWM16-25, CDPXWM16-25R



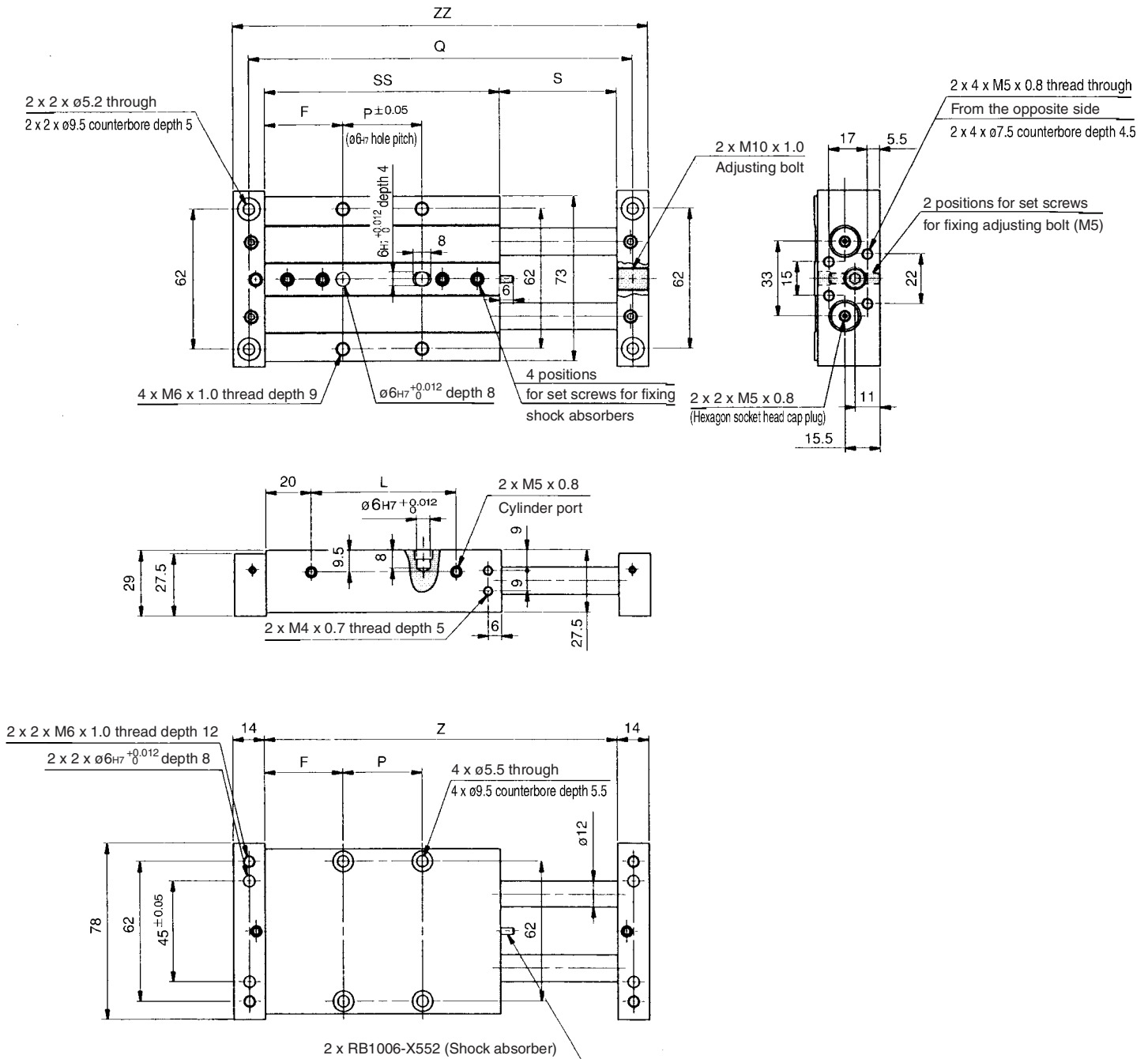
Note 1) The dimensions show D-A7 and D-A8. (mm)

Auto switch model	Hw	Ht	Hv
D-A7□, D-A80	23	15	10.5
D-F7□, D-J79, D-J79W, D-F7□W, D-F79F, D-F7BAL, D-F7NTL	23	15	10
D-A7□H, D-A80H	22	15	9
D-A73C, D-A80C	23	17.5	17.5
D-F7□V, D-F7□WV, D-F7BAV	23	15	14
D-J79C	24	17.5	16

Note 2) 2 magnets for auto switches are installed in the housing.

Slide Unit: Built-in Shock Absorber
Slide Bearing Type **Series CXWM**

ø20 Basic Type: CXWM20-Stroke/50 to 200

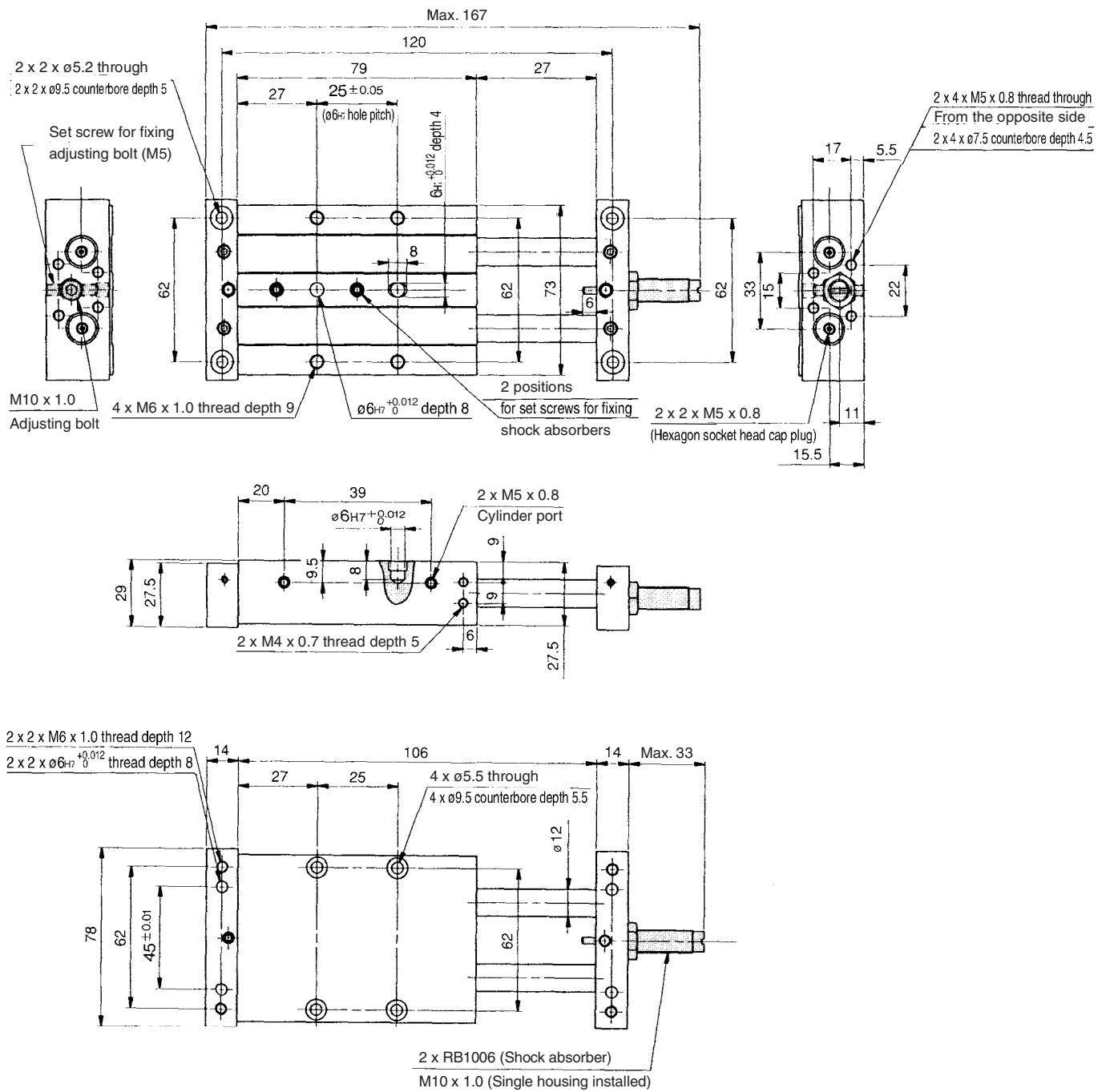


Model	F	L	P	Q	S	SS	Z	ZZ
CXWM20-50	34.5	64	35	170	52	104	156	184
CXWM20-75	34.5	89	60	220	77	129	206	234
CXWM20-100	39.5	114	75	270	102	154	256	284
CXWM20-125	44.5	139	90	320	127	179	306	334
CXWM20-150	57	164	90	370	152	204	356	384
CXWM20-175	69.5	189	90	420	177	229	406	434
CXWM20-200	82	214	90	470	202	254	456	484

Note) For 25 stroke, the shock absorber is mounted on a single side of the plate. For dimensions of 25 stroke, refer to page 488.

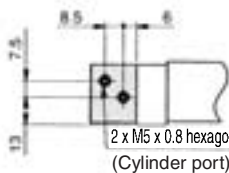
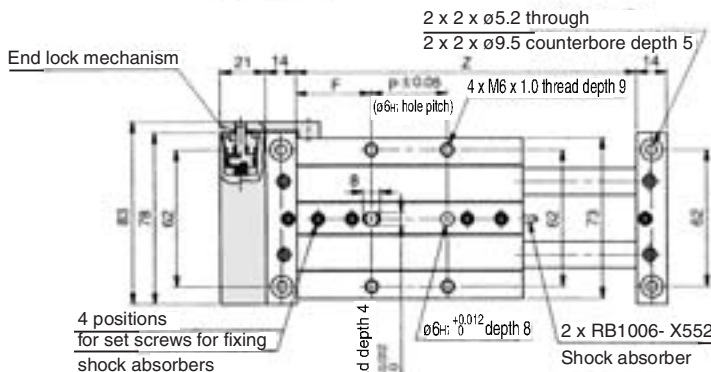
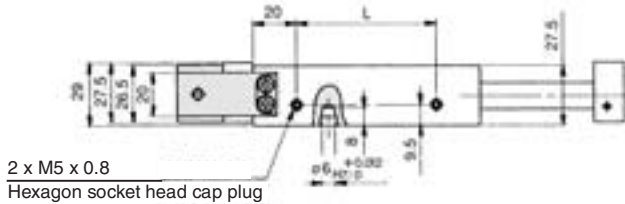
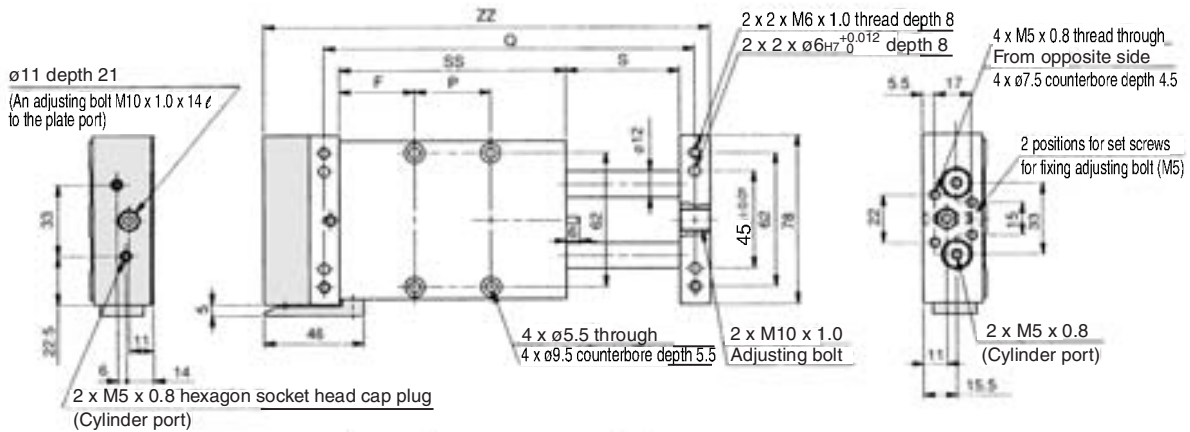
Series CXWM

ø20 Basic Type: CXWM20-25 stroke



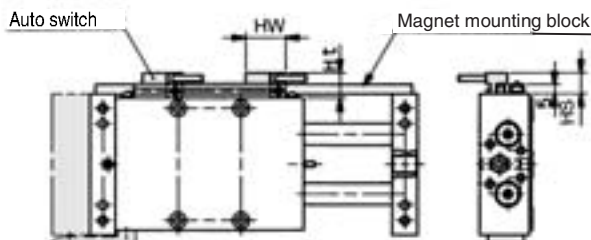
Slide Unit: Built-in Shock Absorber Slide Bearing Type **Series CXWM**

ø20 With End Lock: CXWM20-Stroke/50 to 200 R



Model	F	L	P	Q	S	SS	Z	ZZ
CXWM20-50R	34.5	64	35	170	52	104	156	205
CXWM20-75R	34.5	89	60	220	77	129	206	255
CXWM20-100R	39.5	114	75	270	102	154	256	305
CXWM20-125R	44.5	139	90	320	127	179	306	355
CXWM20-150R	57	164	90	370	152	204	356	405
CXWM20-175R	69.5	189	90	420	177	229	406	455
CXWM20-200R	82	214	90	470	202	254	456	505

Housing mounting style with auto switch CDBXWM20-Stroke, CDBXWM20-Stroke R

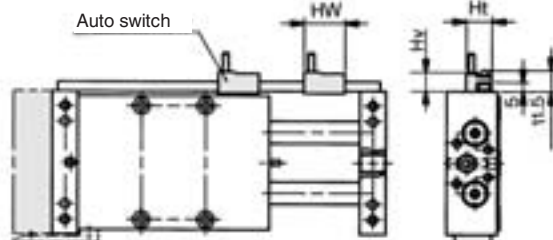


Note 1) The dimensions show D-A7 and D-A8. (mm)

Auto switch model	Hw	Hs	Ht
D-A7□, D-A80	23	12.5	15
D-F7□, D-J79, D-J79W, D-F7□W, D-F79F, D-F7BAL, D-F7NTL	23	12.5	15
D-A7□H, D-A80H	22	12.5	15
D-A73C, D-A80C	23	15	17.5
D-F7□V, D-F7□WV, D-F7BAV	23	12.5	15
D-J79C	24	15	17.5
D-F7LF	30	12.5	15

Note 2) For 25 stroke, the shock absorber is mounted on a single side of the plate. For dimensions of 25 stroke, refer to page 490.

Plate mounting style with auto switch CDPXWM20-Stroke, CDPXWM20-Stroke R



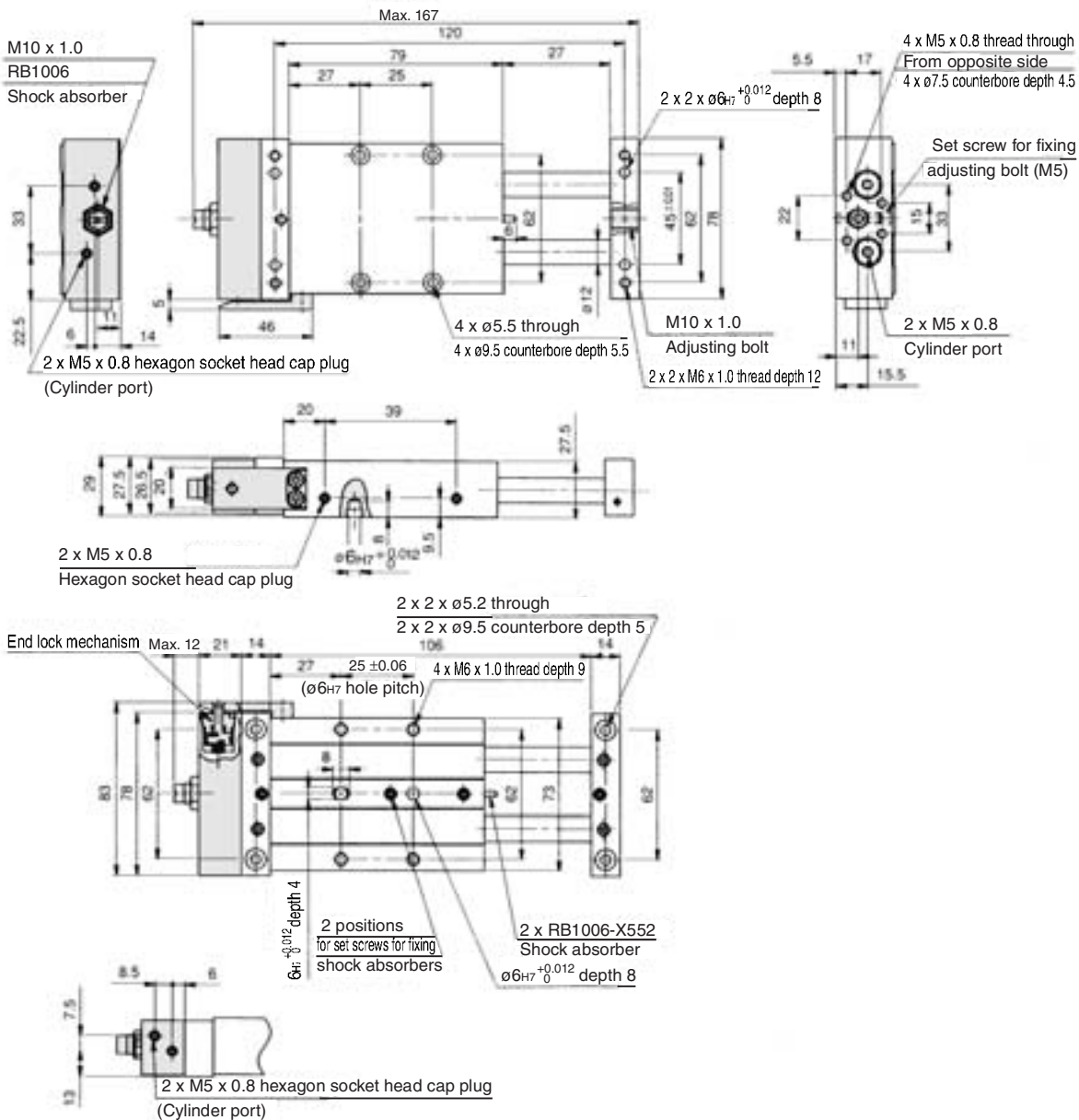
Note 1) The dimensions show D-A7 and D-A8. (mm)

Auto switch model	Hw	Ht	Hv
D-A7□, D-A80	23	15	10.5
D-F7□, D-J79, D-J79W, D-F7□W, D-F79F, D-F7BAL, D-F7NTL	23	15	10
D-A7□H, D-A80H	22	15	9
D-A73C, D-A80C	23	17.5	17.5
D-F7□V, D-F7□WV, D-F7BAV	23	15	14
D-J79C	24	17.5	16

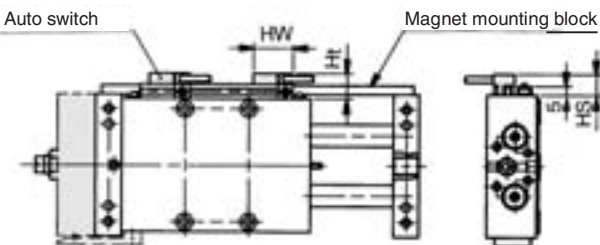
Note 2) For 25 stroke, the shock absorber is mounted on a single side of the plate. For dimensions of 25 stroke, refer to page 490.

Series CXWM

ø20 With End Lock: CXWM20-25 stroke R



Housing mounting style with auto switch CDBXWM20-25, CDBXWM20-25R

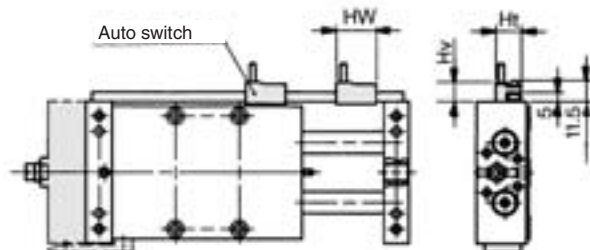


Note 1) The dimensions show D-A7 and D-A8. (mm)

Auto switch model	Hw	Hs	Ht
D-A7□, D-A80	23	12.5	15
D-F7□, D-J79, D-J79W, D-F7□W, D-F79F, D-F7BAL, D-F7NTL	23	12.5	15
D-A7□H, D-A80H	22	12.5	15
D-A73C, D-A80C	23	15	17.5
D-F7□V, D-F7□WV, D-F7BAV	23	12.5	15
D-J79C	24	15	17.5
D-F7LF	30	12.5	15

Note 2) 2 magnets for auto switches are equipped to the magnet mounting block.

Plate mounting style with auto switch CDPXWM20-25, CDPXWM20-25R

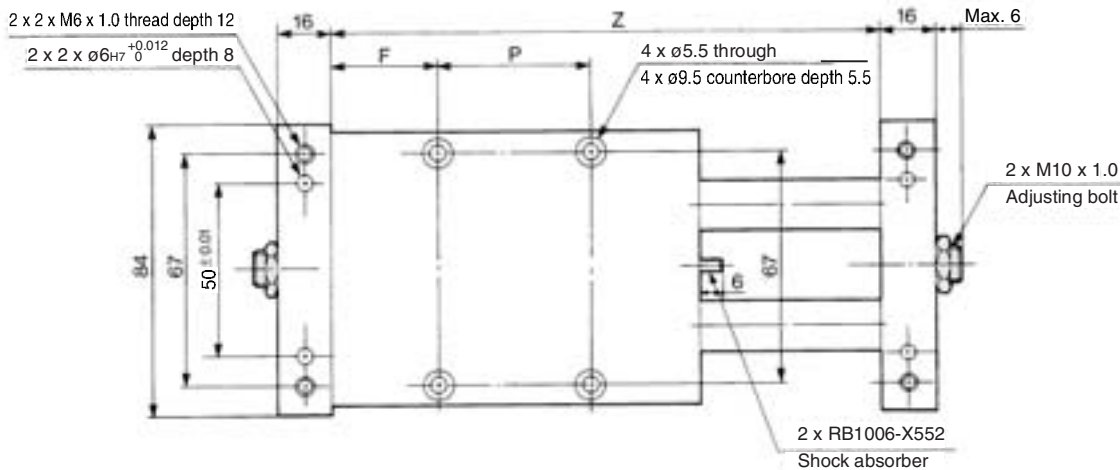
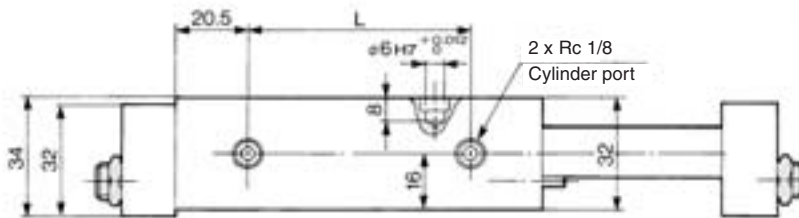
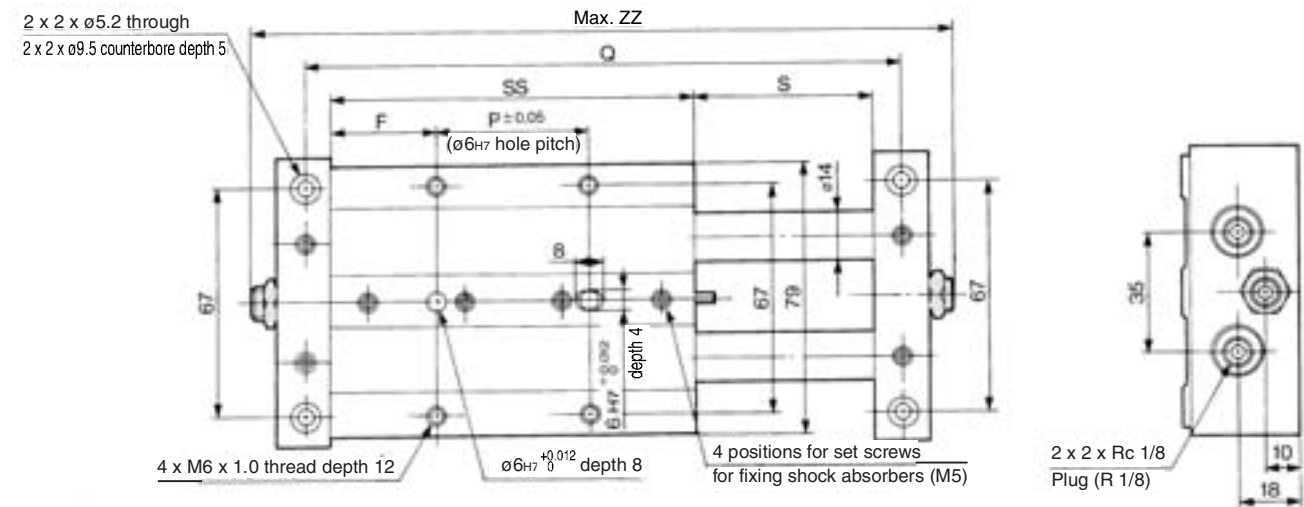


Note 1) The dimensions show D-A7 and D-A8. (mm)

Auto switch model	Hw	Ht	Hv
D-A7□, D-A80	23	15	10.5
D-F7□, D-J79, D-J79W, D-F7□W, D-F79F, D-F7BAL, D-F7NTL	23	15	10
D-A7□H, D-A80H	22	15	9
D-A73C, D-A80C	23	17.5	17.5
D-F7□V, D-F7□WV, D-F7BAV	23	15	14
D-J79C	24	17.5	16

Note 2) 2 magnets for auto switches are installed in the housing.

ø25 Basic Type: CXWM25-Stroke/50 to 200



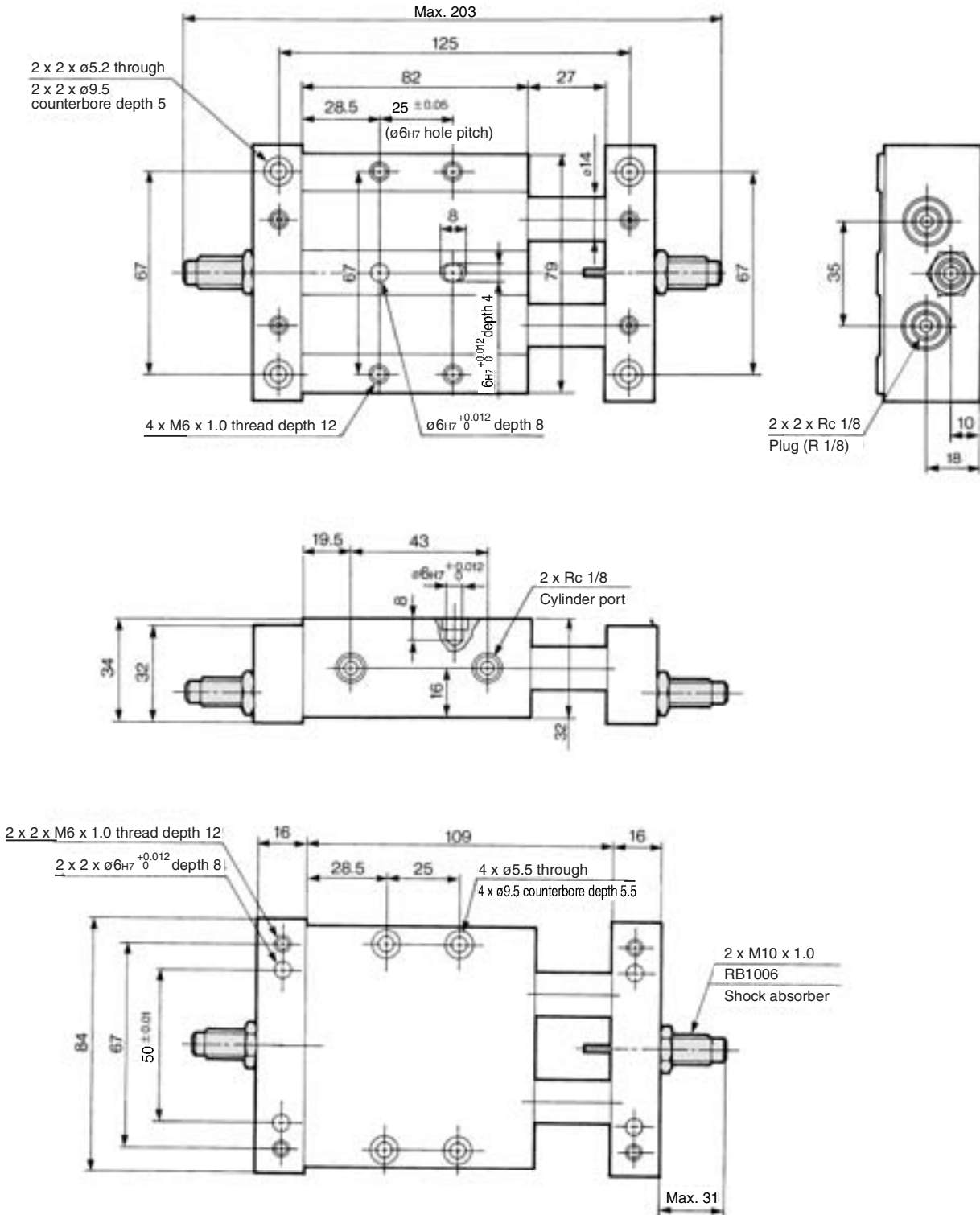
Model	F	L	P	Q	S	SS	Z	ZZ
CXWM25-50	31	66	45	175	52	107	159	203
CXWM25-75	33.5	91	65	225	77	132	209	253
CXWM25-100	33.5	116	90	275	102	157	259	303
CXWM25-125	46	141	90	325	127	182	309	353
CXWM25-150	58.5	166	90	375	152	207	359	403
CXWM25-175	71	191	90	425	177	232	409	453
CXWM25-200	83.5	216	90	475	202	257	459	503



Note) For 25 stroke, the shock absorber is mounted on a plate.
For dimensions of 25 stroke, refer to page 492.

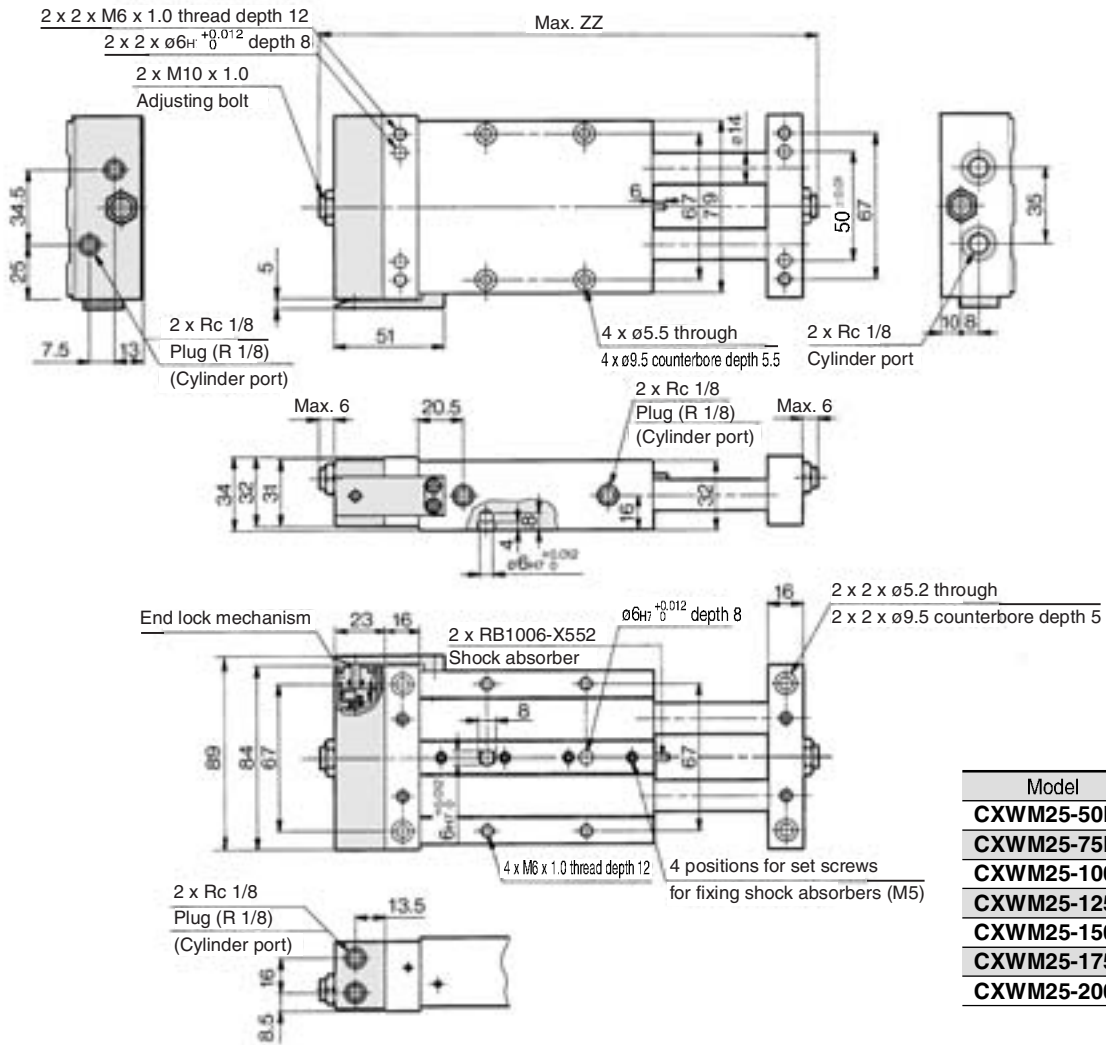
Series CXWM

ø25 Basic Type: CXWM25-25 stroke



Slide Unit: Built-in Shock Absorber Slide Bearing Type **Series CXWM**

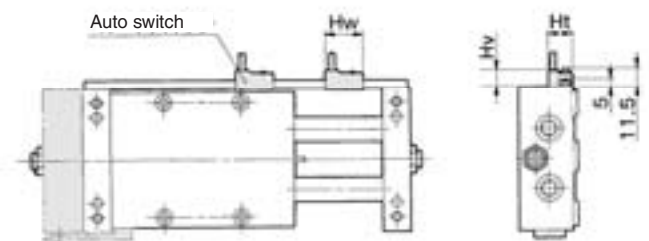
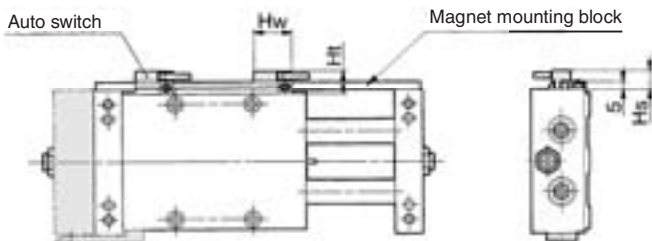
ø25 With End Lock: CXWM25-Stroke/50 to 200 R



Model	ZZ (mm)
CXWM25-50R	226
CXWM25-75R	276
CXWM25-100R	326
CXWM25-125R	376
CXWM25-150R	426
CXWM25-175R	476
CXWM25-200R	526

Housing mounting style with auto switch CDBXWM25-Stroke, CDBXWM25-Stroke R

Plate mounting style with auto switch CDPXWM25-Stroke, CDPXWM25-Stroke R



Note 1) The dimensions show D-A7 and D-A8. (mm)

Auto switch model	Hw	Hs	Ht
D-A7□, D-A80	23	12.5	15
D-F7□, D-J79, D-J79W, D-F7□W, D-F79F, D-F7BAL, D-F7NTL	23	12.5	15
D-A7□H, D-A80H	22	12.5	15
D-A73C, D-A80C	23	15	17.5
D-F7□V, D-F7□WV, D-F7BAV	23	12.5	15
D-J79C	24	15	17.5
D-F7LF	30	12.5	15

Note 2) For 25 stroke, the shock absorber is mounted on a single side of the plate. For dimensions of 25 stroke, refer to page 494.

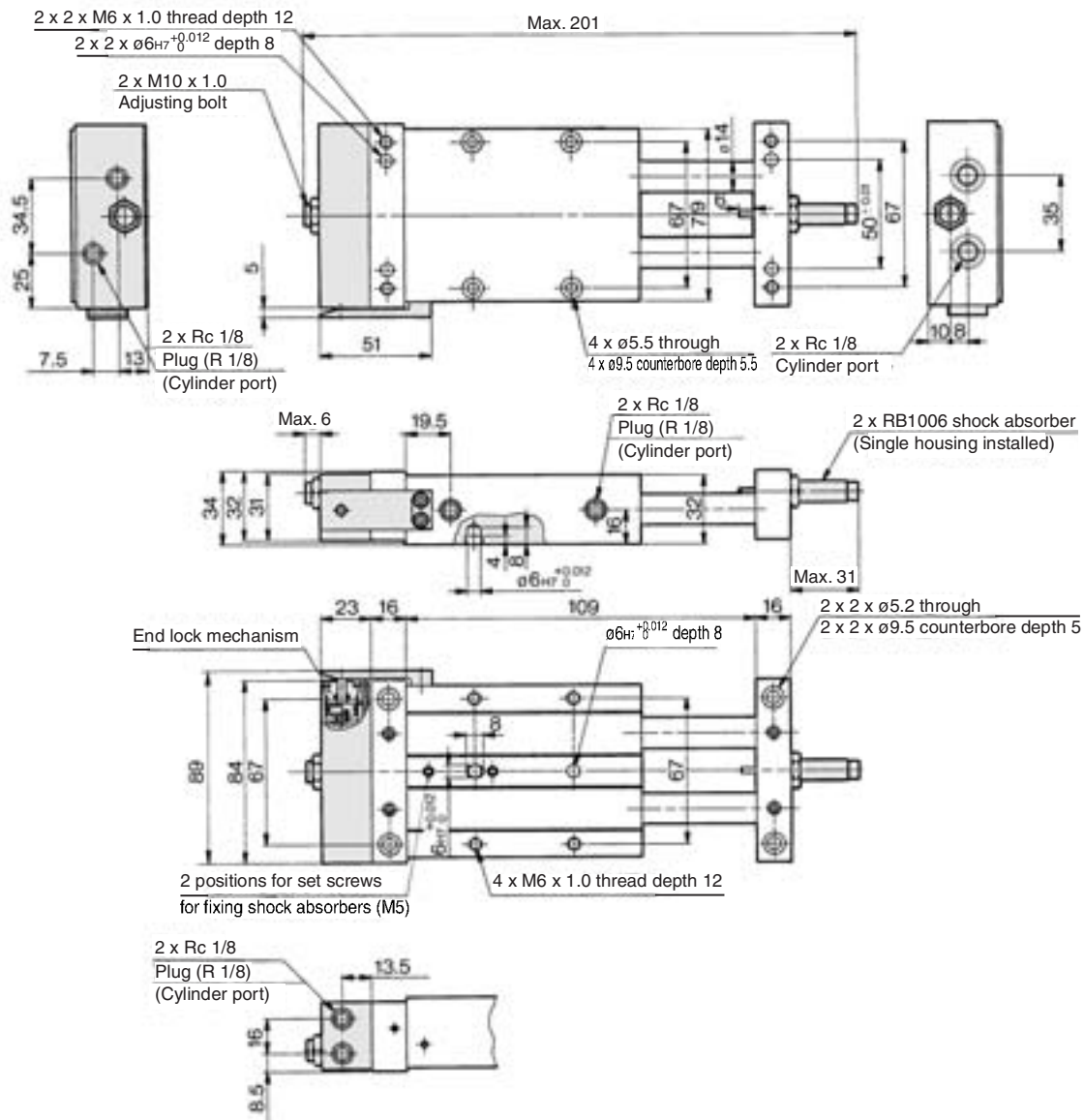
Note 1) The dimensions show D-A7 and D-A8. (mm)

Auto switch model	Hw	Ht	Hv
D-A7□, D-A80	23	15	10.5
D-F7□, D-J79, D-J79W, D-F7□W, D-F79F, D-F7BAL, D-F7NTL	23	15	10
D-A7□H, D-A80H	22	15	9
D-A73C, D-A80C	23	17.5	17.5
D-F7□V, D-F7□WV, D-F7BAV	23	15	14
D-J79C	24	17.5	16

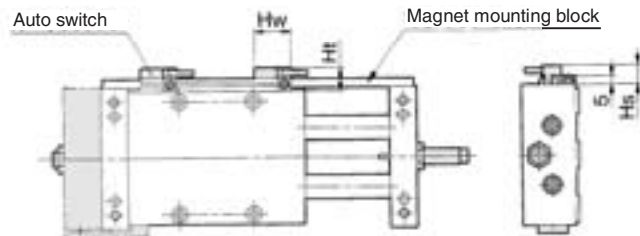
Note 2) For 25 stroke, the shock absorber is mounted on a single side of the plate. For dimensions of 25 stroke, refer to page 494.

Series CXWM

ø25 With End Lock: CXWM25-25 stroke R



Housing mounting style with auto switch CDBXWM25-25, CDBXWM25-25R

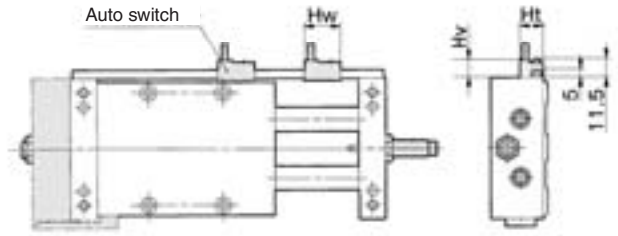


Note 1) The dimensions show D-A7 and D-A8. (mm)

Auto switch model	Hw	Hs	Ht
D-A7□, D-A80	23	12.5	15
D-F7□, D-J79, D-J79W, D-F7□W, D-F79F, D-F7BAL, D-F7NTL	23	12.5	15
D-A7□H, D-A80H	22	12.5	15
D-A73C, D-A80C	23	15	17.5
D-F7□V, D-F7□WV, D-F7BAV	23	12.5	15
D-J79C	24	15	17.5
D-F7LF	30	12.5	15

Note 2) 2 magnets for auto switches are equipped to the magnet mounting block.

Plate mounting style with auto switch CDPXWM25-25, CDPXWM25-25R

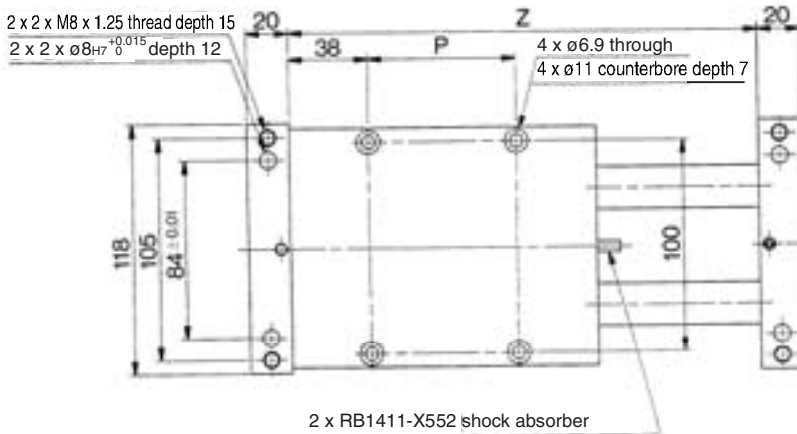
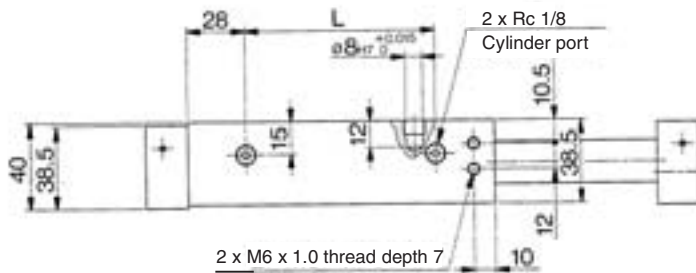
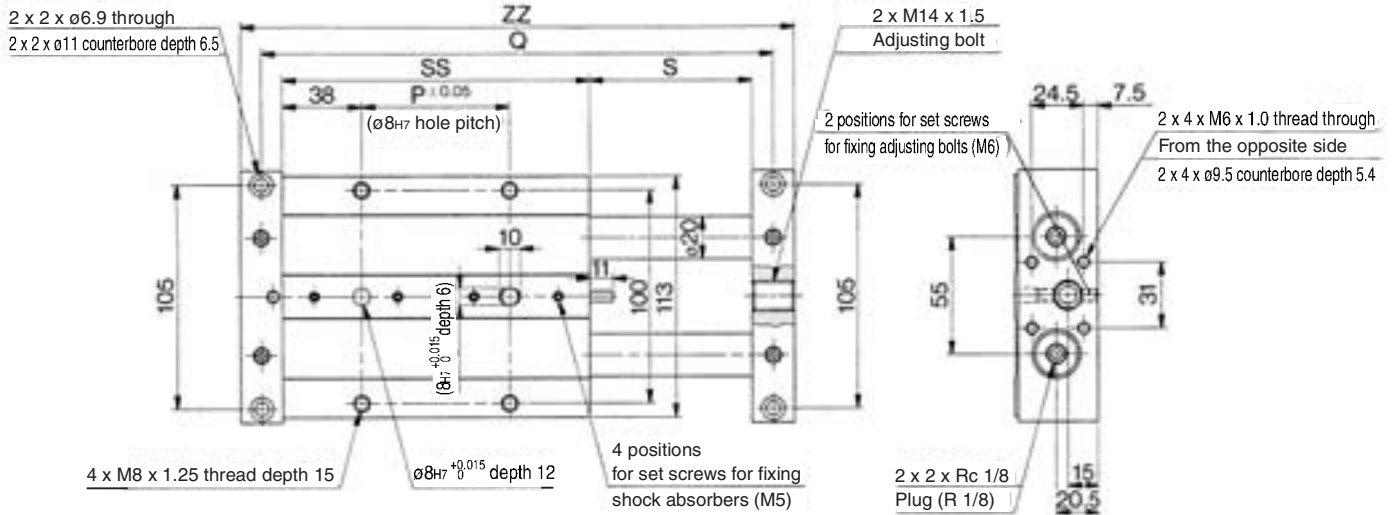


Note 1) The dimensions show D-A7 and D-A8. (mm)

Auto switch model	Hw	Ht	Hv
D-A7□, D-A80	23	15	10.5
D-F7□, D-J79, D-J79W, D-F7□W, D-F79F, D-F7BAL, D-F7NTL	23	15	10
D-A7□H, D-A80H	22	15	9
D-A73C, D-A80C	23	17.5	17.5
D-F7□V, D-F7□WV, D-F7BAV	23	15	14
D-J79C	24	17.5	16

Note 2) 2 magnets for auto switches are installed in the housing.

ø32 Basic Type: CXWM32-Stroke/75 to 200



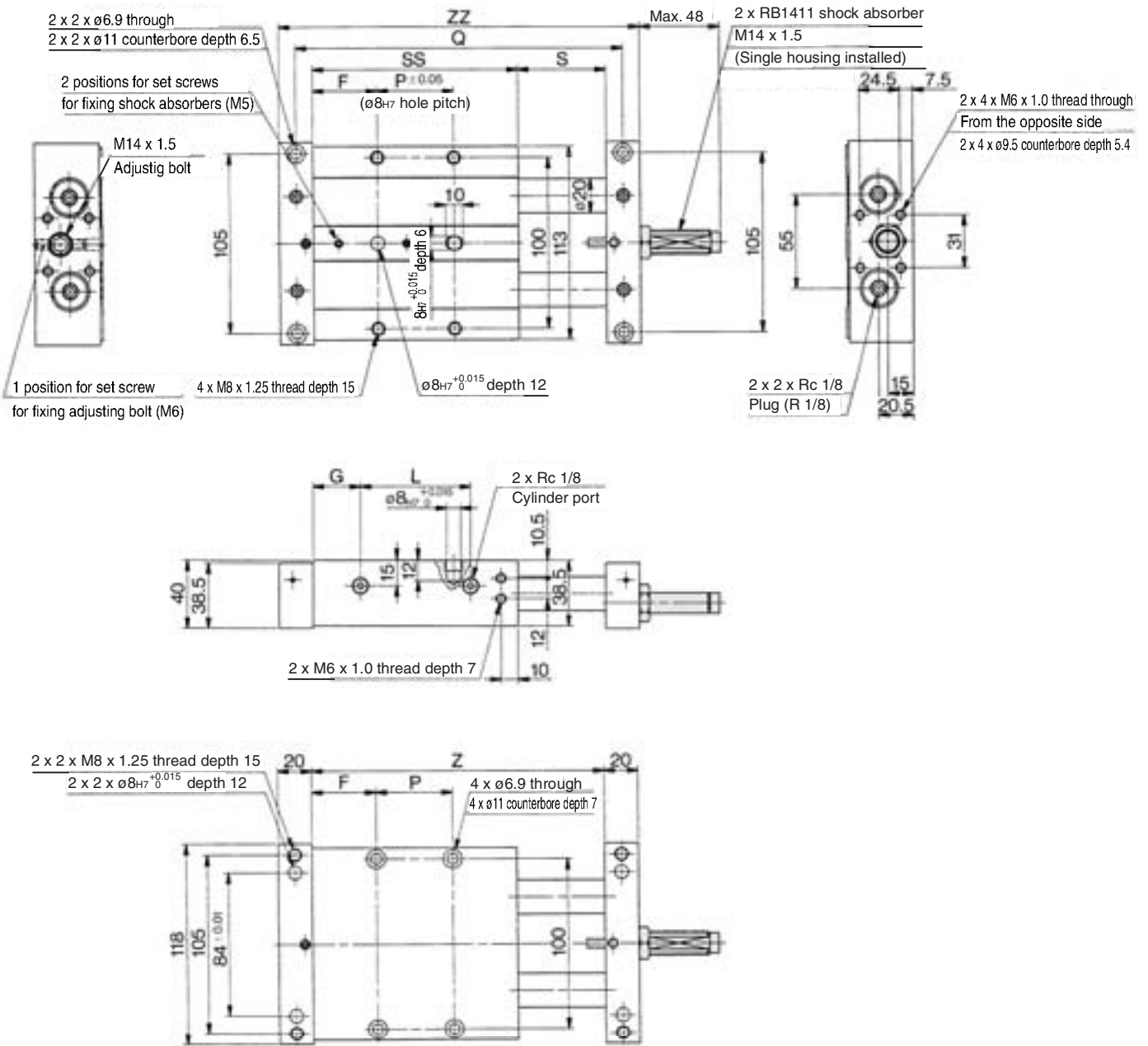
(mm)

Model	L	P	Q	S	SS	Z	ZZ
CXWM32-75	90	70	243	77	146	223	263
CXWM32-100	115	95	293	102	171	273	313
CXWM32-125	140	120	343	127	196	323	363
CXWM32-150	165	145	393	152	221	373	413
CXWM32-175	190	170	443	177	246	423	463
CXWM32-200	215	195	493	202	271	473	513

Note) For 25 and 50 strokes, the shock absorber is mounted on a single side of the plate. For dimensions of 25 and 50 strokes, refer to page 496.

Series CXWM

ø32 Basic Type: CXWM32-Stroke/25, 50

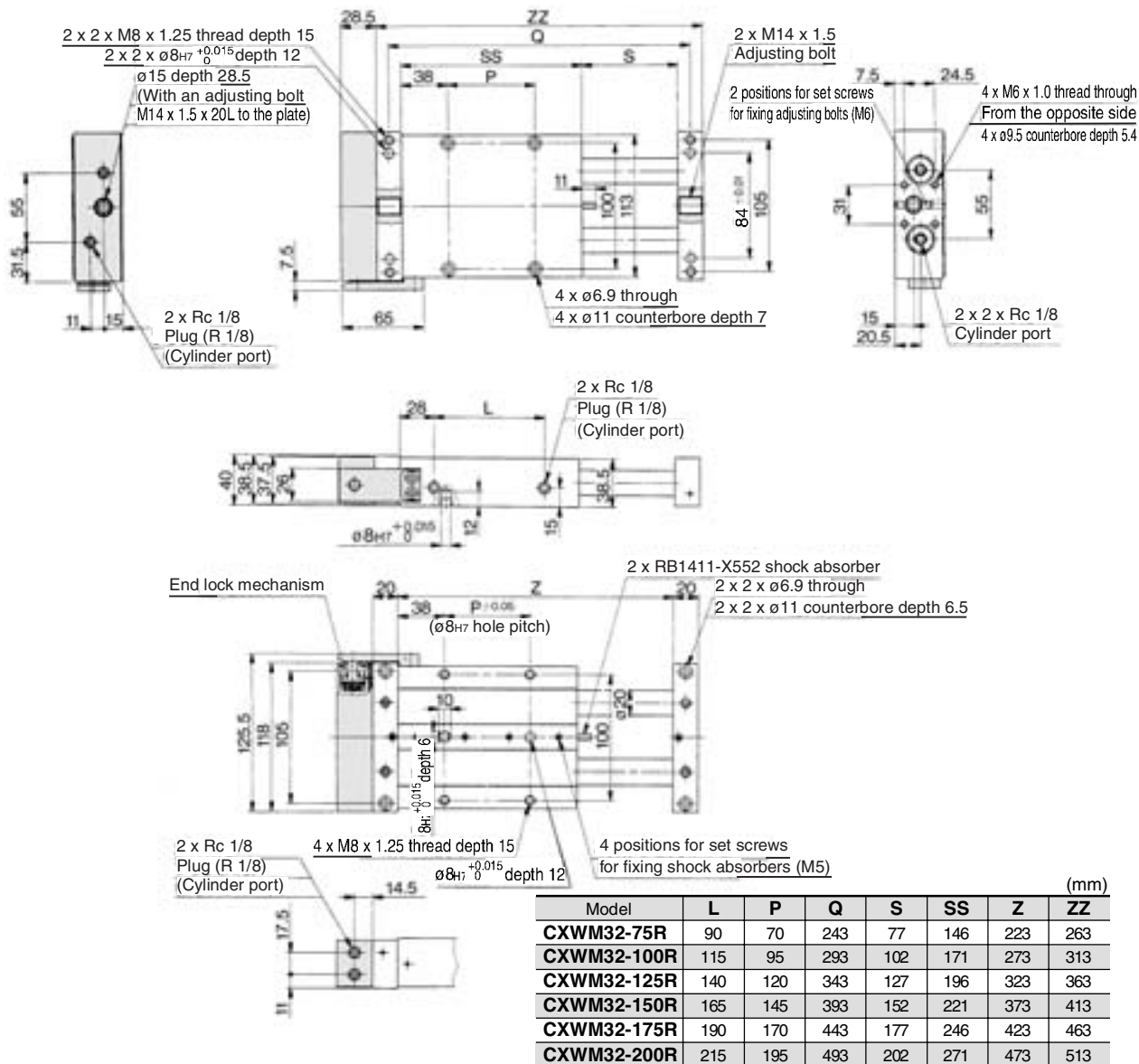


(mm)

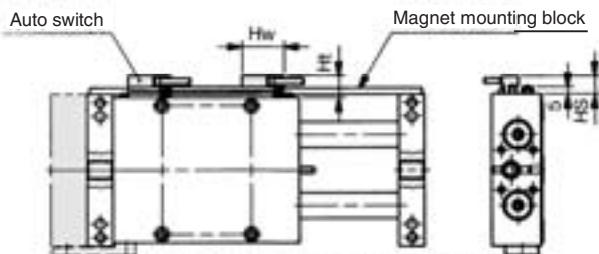
Model	F	L	P	Q	S	SS	G	Z	ZZ
CXWM32-25	37	41	22	143	27	96	27.5	123	163
CXWM32-50	38	65	45	193	52	121	28	173	213

Slide Unit: Built-in Shock Absorber
Slide Bearing Type Series CXWM

ø32 With End Lock: CXWM32-Stroke/75 to 200 R



Housing mounting style with auto switch
CDBXWM32-Stroke, CDBXWM32-Stroke R

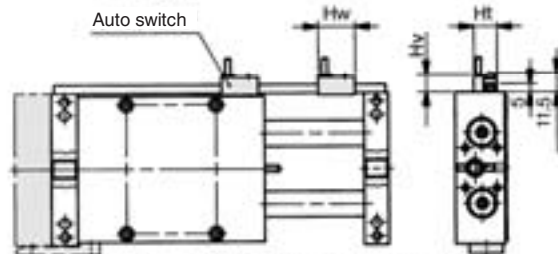


Note 1) The dimensions show D-A7 and D-A8. (mm)

Auto switch model	Hw	Hs	Ht
D-A7□, D-A80	23	12.5	15
D-F7□, D-J79, D-J79W, D-F7□W, D-F79F, D-F7BAL, D-F7NTL	23	12.5	15
D-A7□H, D-A80H	22	12.5	15
D-A73C, D-A80C	23	15	17.5
D-F7□V, D-F7□WV, D-F7BAV	23	12.5	15
D-J79C	24	15	17.5
D-F7LF	30	12.5	15

Note 2) For 25 and 50 stroke, the shock absorber is mounted on a single side of the plate. For dimensions of 25 and 50 strokes, refer to page 498.

Plate mounting style with auto switch
CDPXWM32-Stroke, CDPXWM32-Stroke R



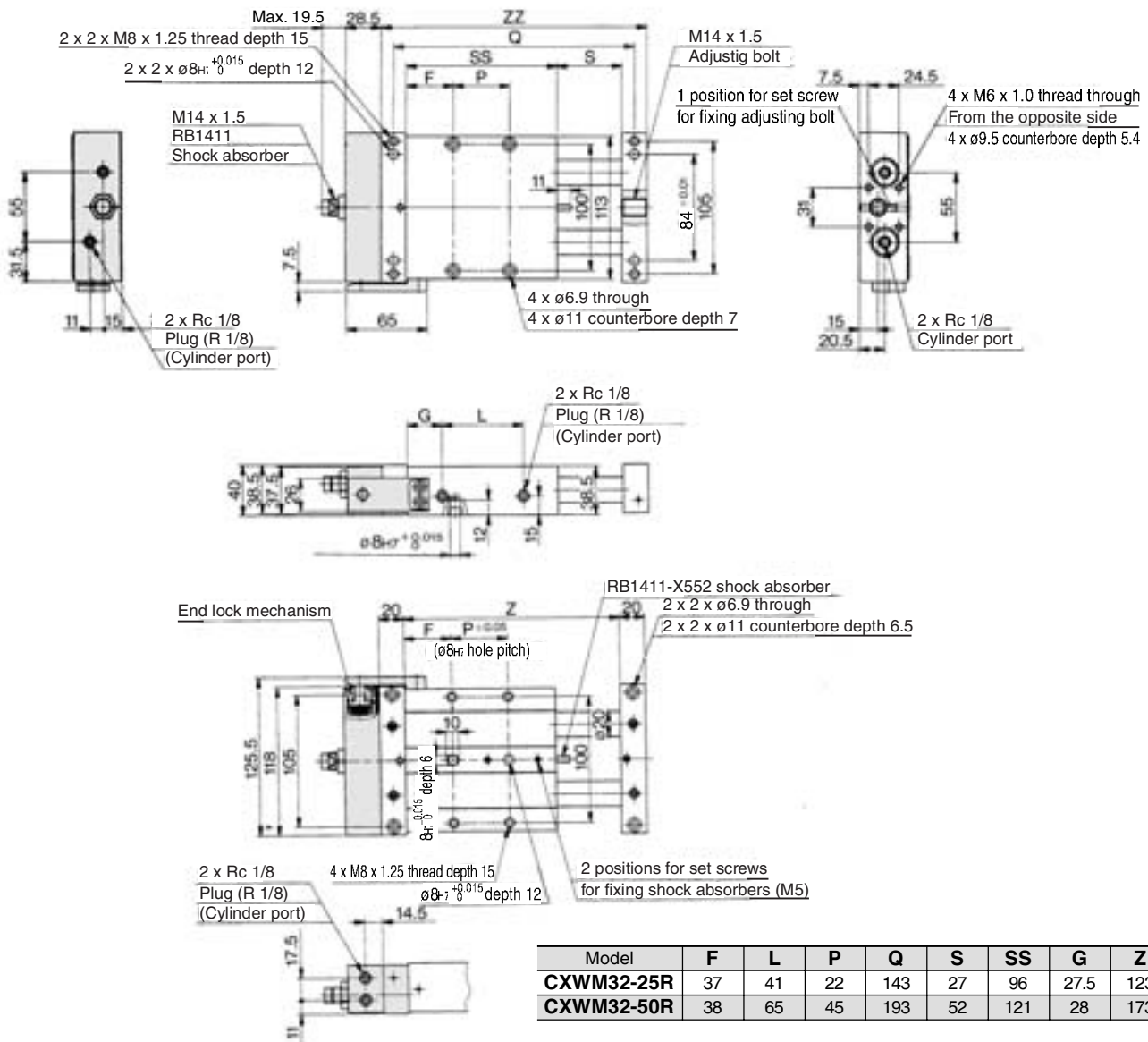
Note 1) The dimensions show D-A7 and D-A8. (mm)

Auto switch model	Hw	Ht	Hv
D-A7□, D-A80	23	15	10.5
D-F7□, D-J79, D-J79W, D-F7□W, D-F79F, D-F7BAL, D-F7NTL	23	15	10
D-A7□H, D-A80H	22	15	9
D-A73C, D-A80C	23	17.5	17.5
D-F7□V, D-F7□WV, D-F7BAV	23	15	14
D-J79C	24	17.5	16

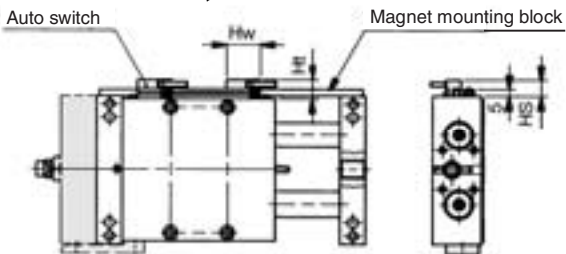
Note 2) For 25 and 50 stroke, the shock absorber is mounted on a single side of the plate. For dimensions of 25 and 50 strokes, refer to page 498.

Series CXWM

ø32 With End Lock: CXWM32-Stroke/25, 50 R



Housing mounting style with auto switch CDBXWM32-25/50, CDBXWM32-25R/50R

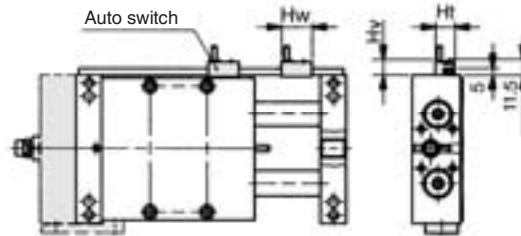


Note 1) The dimensions show D-A7 and D-A8. (mm)

Auto switch model	Hw	Hs	Ht
D-A7□, D-A80	23	12.5	15
D-F7□, D-J79, D-J79W, D-F7□W, D-F79F, D-F7BAL, D-F7NTL	23	12.5	15
D-A7□H, D-A80H	22	12.5	15
D-A73C, D-A80C	23	15	17.5
D-F7□V, D-F7□WV, D-F7BAV	23	12.5	15
D-J79C	24	15	17.5
D-F7LF	30	12.5	15

Note 2) For 25 stroke, 2 magnets for auto switches are equipped to the magnet mounting block.

Plate mounting style with auto switch CDPXWM32-25/50, CDPXWM32-25R/50R



Note 1) The dimensions show D-A7 and D-A8. (mm)

Auto switch model	Hw	Ht	Hv
D-A7□, D-A80	23	15	10.5
D-F7□, D-J79, D-J79W, D-F7□W, D-F79F, D-F7BAL, D-F7NTL	23	15	10
D-A7□H, D-A80H	22	15	9
D-A73C, D-A80C	23	17.5	17.5
D-F7□V, D-F7□WV, D-F7BAV	23	15	14
D-J79C	24	17.5	16

Note 2) For 25 stroke, 2 magnets for auto switches are installed in the housing.