

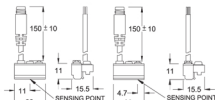
G-11 SERIES



DIMENSION

G-11R, G-11R-QD

G-11N, G-11P
G-11N-QD, G-11P-QD



Unit:mm

QD PINOUT

*3 wire QD wiring



*2 wire QD wiring



*2 wire EQD wiring



SPECIFICATION

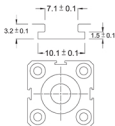
TYPE	G-11R	G-11N	G-11P
CONNECT DIAGRAM			
CHARACTERISTICS			
WIRING METHOD	2-Wire Type	3-Wire Type	
SWITCHING LOGIC	SPST, Normally Open	Solid State Output, Normally Open	
SENSOR TYPE	Reed Switch	NPN Current Sinking	PNP Current Sourcing
OPERATING VOLTAGE	5-240V DC/AC	5-30V DC	
SWITCHING CURRENT	100 mA max.	200 mA max.	
CONTACT RATING	10 W max.	6 W max.	
CURRENT CONSUMPTION	—	22 mA @ 24V max.	20 mA @ 24V max.
VOLTAGE DROP	3.5 V max.	0.5 V max.	
LEAKAGE CURRENT	—	0.01 mA max.	
INDICATOR	Red LED	Red LED	Green LED
CABLE	φ 3.3, 2C, PVC	φ 3.3, 3C, PVC	
OPERATING FREQUENCY	200 Hz	1000 Hz	
MAGNET REQUIREMENT(NOTE 1.)	40 Gauss		
TEMPERATURE RANGE	-10~70 °C		
SHOCK(NOTE 2.)	30 G	50 G	
VIBRATION(NOTE 3.)	9 G		
ENCLOSURE CLASSIFICATION	IEC 529 IP 67		
PROTECTION CIRCUIT	None	Power Source Reverse Polarity; Surge Suppression	

NOTE : 1.Measuring standard target : φ 15.5 × φ 8 × 5t (Anisotropy Rubber Magnet)

2.Sin Wave / X - Y - Z 3 Directions / 3 Times Each Direction / 11ms Each Time.

3.Double Amplitude 1.5mm / 10Hz-55Hz-10Hz (Sweep 1min) / X - Y - Z 3 Directions / 1 Hour Each Time.

GROOVE DIMENSION



GENTLE AUTOMATIC SOLUTION SDN BHD (684637-U)

No.36, Jalan Industri USJ 1/13, Taman Perindustrian USJ 1, 47600 Subang Jaya, Selangor, Malaysia

Tel: 603-8023 7743 / 8743 Fax: 603-8023 9743 <http://www.gentle.com.my> email: sales@gentle.com.my