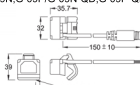


# G-09 SERIES

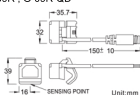


## DIMENSION

G-09N, G-09P/G-09N-QD, G-09P-QD



G-09R, G-09R-QD



## QD PINOUT

\*3 wire QD wiring



\*2 wire QD wiring



\*2 wire EQD wiring



## SPECIFICATION

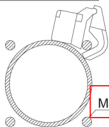
TYPE	G-09R	G-09N	G-09P
CONNECT DIAGRAM			
CHARACTERISTICS			
WIRING METHOD	2-Wire Type	3-Wire Type	
SWITCHING LOGIC	SPST, Normally Open	Solid State Output, Normally Open	
SENSOR TYPE	Reed Switch	NPN Current Sinking	PNP Current Sourcing
OPERATING VOLTAGE	5-240V DC/AC	5-30V DC	
SWITCHING CURRENT	1Amp. max.	1Amp. max.	
CONTACT RATING	30 W max.	30 W max.	
CURRENT CONSUMPTION	—	42mA @ 24V max.	30 mA @ 24V max.
VOLTAGE DROP	3.5 V max.	1.5 V @ 0.5A max.	
LEAKAGE CURRENT	—	0.01 mA max.	
INDICATOR	Red LED	Power LED: Green, Output LED: Red	
CABLE	φ 4.5, 2C, PVC	φ 4.5, 3C, PVC	
OPERATING FREQUENCY	200 Hz	1000 Hz	
MAGNET REQUIREMENT (NOTE 1.)	60 Gauss	40 Gauss	
TEMPERATURE RANGE		-10-70 °C	
SHOCK (NOTE 2.)	30 G	50 G	
VIBRATION (NOTE 3.)		9 G	
ENCLOSURE CLASSIFICATION		IEC 529 IP 67	
PROTECTION CIRCUIT	MOV, Surge Suppression	Power Source Reverse Polarity; Surge Suppression	

NOTE : 1. Measuring standard target : φ15.5 × φ8 × 5t (Anisotropy Rubber Magnet)

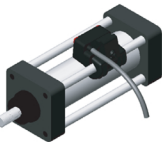
2. Sin Wave / X · Y · Z 3 Directions / 3 Times Each Direction / 11ms Each Time.

3. Double Amplitude 1.5mm / 10Hz-55Hz-10Hz (Sweep 1min) / X · Y · Z 3 Directions / 1 Hour Each Time.

## SELF MOUNTING CLAMPS



Max. tie-rod diameter φ 17.5



Unit:mm

GENTLE AUTOMATIC SOLUTION SDN BHD (684637-U)

No.36, Jalan Industri USJ 1/13, Taman Perindustrian USJ 1, 47600 Subang Jaya, Selangor, Malaysia

Tel: 603-8023 7743 / 8743 Fax: 603-8023 9743 <http://www.gentle.com.my> email: [sales@gentle.com.my](mailto:sales@gentle.com.my)