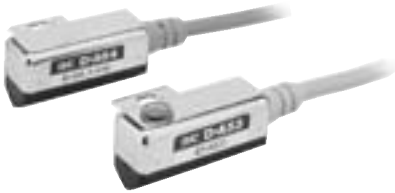


Reed Auto Switch Tie-rod Mounting Style D-A5□/□/□/□/□/□/□/□/□/□/□/□

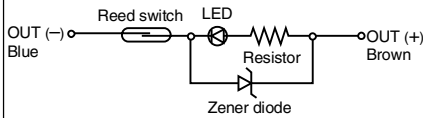


Grommet

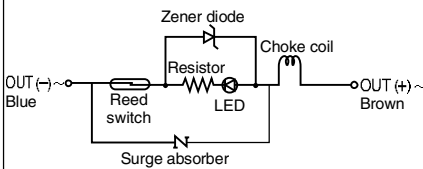


Auto Switch Internal Circuit

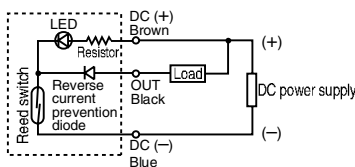
D-A53



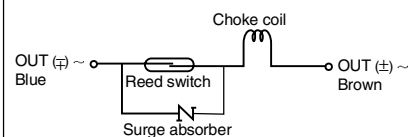
D-A54



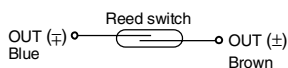
D-A56



D-A64



D-A67



Auto Switch Specifications

PLC: Programmable Logic Controller

D-A5 (With indicator light)					
Auto switch model	D-A53	D-A54		D-A56	
Applicable load	PLC	Relay, PLC		IC circuit	
Load voltage	24 VDC	24 VDC	100 VAC	200 VAC	4 to 8 VDC
Maximum load ⁽³⁾ current and range	5 to 50 mA	5 to 50 mA	5 to 25 mA	5 to 12.5 mA	20 mA
Contact protection circuit	None	Built-in		None	
Internal voltage drop	2.4 V or less	2.4 V or less (to 20 mA)/3.5 V or less (to 50 mA)		0.8 V or less	
Indicator light	Red LED illuminates when turned ON.				
Standard	CE marking				
D-A6 (Without indicator light)					
Auto switch model	D-A64			D-A67	
Applicable load	Relay, PLC			PLC/IC circuit	
Load voltage	24 V ^{AC} DC or less	100 VAC	200 VAC	Max. 24 VDC	
Maximum load current	50 mA	25 mA	12.5 mA	30 mA	
Contact protection circuit	Built-in			None	
Internal resistance	25 Ω or less			1 Ω or less (Including lead wire length of 3 m)	
Standard	CE marking				

• Lead wires — Oilproof heavy-duty vinyl cord, $\phi 4$, 0.3 mm², 2 cores (Brown, Blue), or 0.2 mm², 3 cores (Brown, Black, Blue), 0.5 m

Note 1) Refer to page 1272 for reed auto switch common specifications.

Note 2) Refer to page 1272 for lead wire lengths.

Note 3) Under 5 mA, the strength of the indicator light is poor. In some cases, visibility of the indicator light will not be possible where the output signal is less than 2.5 mA. However, there is no problem in terms of contact output, when an output signal exceeds 1 mA or more.

Mass

(g)

Auto switch model	D-A53	D-A54	D-A56	D-A64	D-A67
Lead wire length (m)	0.5	24	24	24	24
	3	48	48	48	48
	5	96	—	—	—

Dimensions

(mm)

