

# YC5, 13 Series

3.5-Port Pilot Air Operated Valve  
 Rubber Seal/Direct Mounting Type

- YCS245 | YCS2413**  
2-position, single sided
- YCD245 | YCD2413**  
2-position, double sided
- YCD345 | YCD3413**  
3-position, closed center
- YCE345 | YCE3413**  
3-position, ABR connect
- YCO345 | YCO3413**  
3-position, PAB connect



### Specifications(YC5 series)

Model No.	Unit	YCS245	YCD245	YCD345	YCE345	YCO345
Fluid		Non-lubricated/lubricated air				
Port size		M5				
Sonic-speed transmission <sup>Ⓢ</sup>	dm <sup>3</sup> /(s·bar)	0.80		0.44(M5) 0.5(Rc½)		
Critical pressure ratio <sup>Ⓢ</sup>		0.20		0.2(M5) 0.25(Rc½)		
Effective area <sup>Ⓢ</sup>	mm <sup>2</sup>	4		2.2(M5) 2.5(Rc½)		
Operating ambient temperature	°C	-5~50 <sup>①</sup>				
Operating pressure range	MPa	0.2~0.8		0~0.8		
Pilot pressure	MPa	0.2~0.8 <sup>Ⓢ</sup>				
Mass	g	34	38	47		

### Specifications(YC13 series)

Model No.	Unit	YCS2413	YCD2413	YCD3413	YCE3413	YCO3413
Fluid		Non-lubricated/lubricated air				
Port size		Rc½				
Sonic-speed transmission <sup>Ⓢ</sup>	dm <sup>3</sup> /(s·bar)	2.50		1.60		1.00
Critical pressure ratio <sup>Ⓢ</sup>		0.22		0.2		0.22
Effective area <sup>Ⓢ</sup>	mm <sup>2</sup>	12.5		8		5
Operating ambient temperature	°C	-5~50 <sup>①</sup>				
Operating pressure range	MPa	0.2~0.8		0~0.8		
Pilot pressure	MPa	0.2~0.8 <sup>Ⓢ</sup>				
Mass	g	68	78	98		

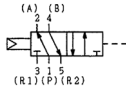


1. When the temperature falls below 5 °C, please provide air dryer to prevent water frozen.
2. Pilot pressure must remain greater than the working pressure. (Pilot pressure ≥ Working pressure).
3. The value shown in sonic-speed transmission, critical pressure ratio, effective area, Cv value represent the value of Port 1 -> 4.

# YCS245 – M5

Model No.

**YCS245, YCS2413**



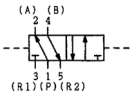
Port size

M3 : M3×0.5

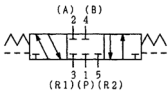
M5 : M5×0.8

O1 : RC $\frac{1}{8}$

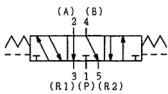
**YCD245, YCD2413**



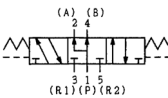
**YCD345, YCD3413**



**YCE345, YCE3413**



**YCO345, YCO3413**



## Dimensions

- If you need dimensions graph, please contact FONTAL.