

PM10 Series

3/5-Port Pilot Operated Solenoid Valves
Metal Seal, In-line/Sub-base Mounting type

PMS2310

2-position, single solenoid

PMS2410

2-position, single solenoid

PMD2410

2-position, double solenoid

PMD3410

3-position, closed center

PME3410

3-position, ABR connect

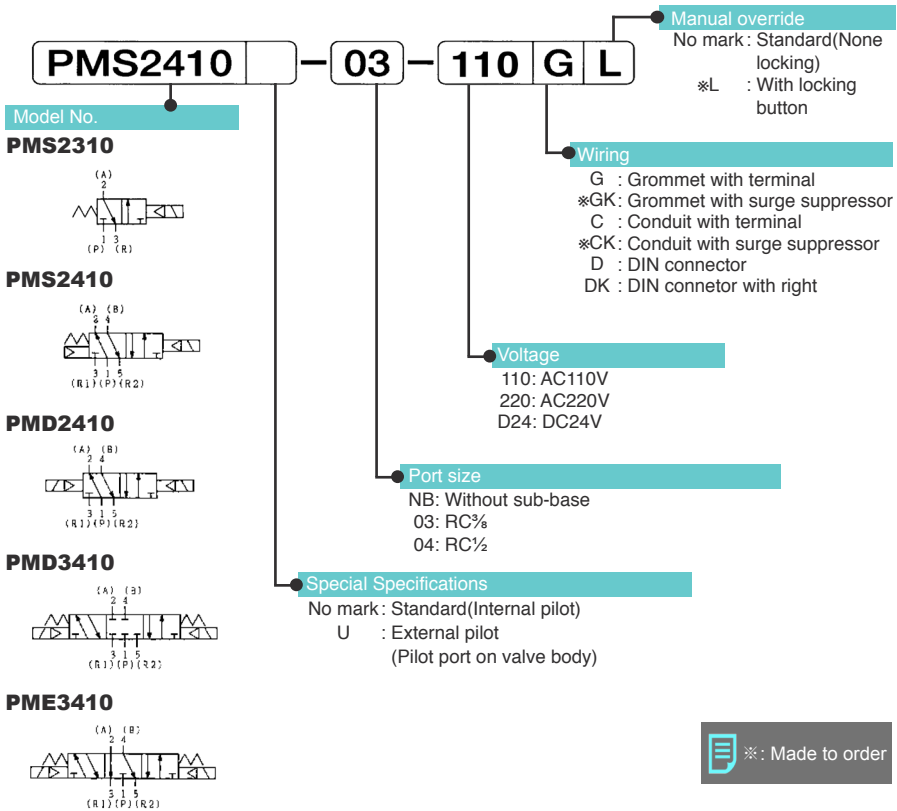


Specifications

Model No.		Unit	PMS2310	PMS2410	PMD2410	PMD3410	PME3410	
Fluid			Non-lubricated/lubricated air					
Port size			RC $\frac{3}{8}$, $\frac{1}{2}$					
Effective area		mm ²	38	50				
CV value			2.06	2.71				
Operating ambient temperature		°C	-5~60					
Operating pressure range		MPa	0.2~0.7	0.2~0.8				
Maximum frequency		cycle/min	300			240		
Response time (at 0.5MPa)		s (average)	ON 0.015 OFF 0.035	ON 0.015 OFF 0.035	ON 0.015	ON 0.020 OFF 0.060		
Rated voltage		V	AC/110,220				DC24	
Grade of insulation			JIS grade B					
Permission voltage fluctuation		%	AC \pm 10 DC+10-15					
Rated frequency		Hz	50/60					
Apparent power	AC	Holding	50Hz	VA				3.2 (110/220)
			60Hz	VA				2.6 (110/220)
		Inrush	50Hz	VA				5 (110/220)
			60Hz	VA				4.5 (110/220)
Power consumption DC		W	2					
Wiring			Grommet with terminal, Conduit with terminal, DIN connector					
Mass		kg	0.8	1.5	1.6	1.9	1.9	



- Supply complete-dry air to avoid freezing when temperature of valve site falls below 5°C
- Response time shown above is in accordance with JIB B 8375
- Effective area shown above is a value between ports 1 and 2, 4



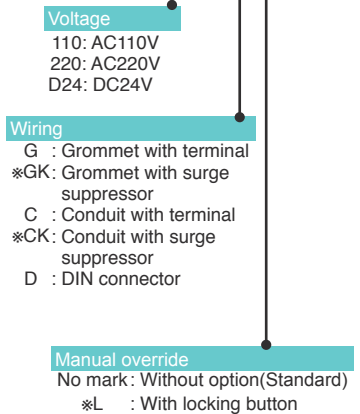
※ : Made to order

Optional Parts and Spare Parts

Parts Name		Model No.
Sub-base	RC $\frac{3}{4}$	PM10-SB-03
	RC $\frac{1}{2}$	PM10-SB-04
Base gasket		A10-G
Spring	For 2-position	PM10-SB
	For 3-position	PM10-3B

Pilot valve

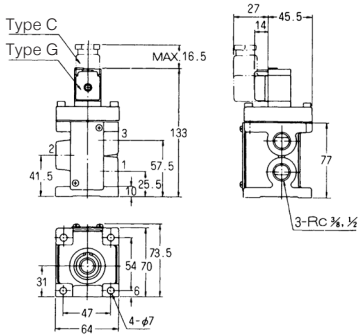
SS231-NB-110GL



PM

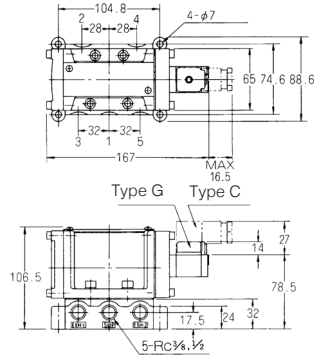
PMS2310

(Unit: mm)



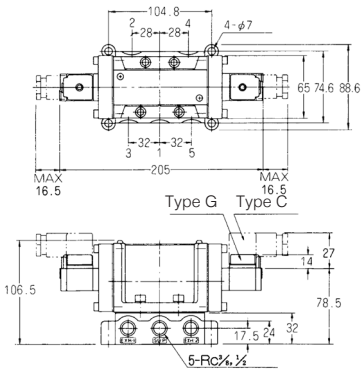
PMS2410

(Unit: mm)



PMD2410

(Unit: mm)



PMD3410, PME3410

(Unit: mm)

