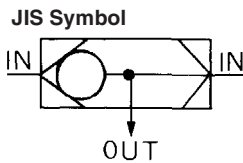


Transmitters: Shuttle Valve

Series *VR1210/1220*

3 ported check valve with one output and 2 pneumatic signal input ports. Output always supplied by high pressure inlet.



Model/Specifications

Model	VR1210-01	VR1220-02
Max. operating pressure	1.0 MPa	
Min. operating pressure	0.05 MPa	
Min. pressure differential	0.05 MPa	
Ambient and fluid temperature	-5 to 60°C (No freezing)	
Effective area	7mm ²	15mm ²
Port size	1/8	1/4
Mass	24 g	45 g

How to Order

VR12 **1** 0 - **01**

• Port size

Applicable model	01	02
1/8	VR 1210	
1/4		VR 1220

• Thread type

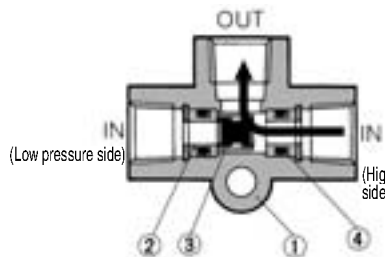
Nil	Rc
N	NPT
F	G

• Body size

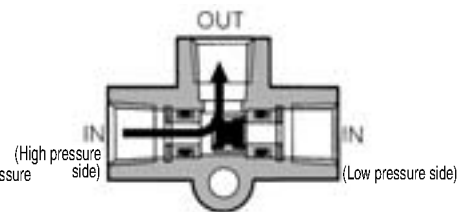
1	1/8 standard
2	1/4 standard

Construction

When right port has higher pressure



When left port has higher pressure

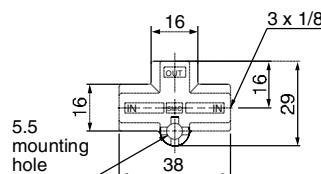


Component Parts

No.	Description	Material	Note	No.	Description	Material	Note
1	Body	ADC	Platinum silver	3	Valve	Brass, NBR	
2	Valve seat	Brass		4	O-ring	NBR	

Dimensions

VR1210



VR1220

