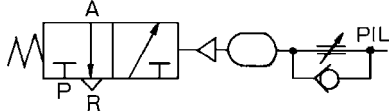


Transmitters: Time Delay Valve Series VR2110

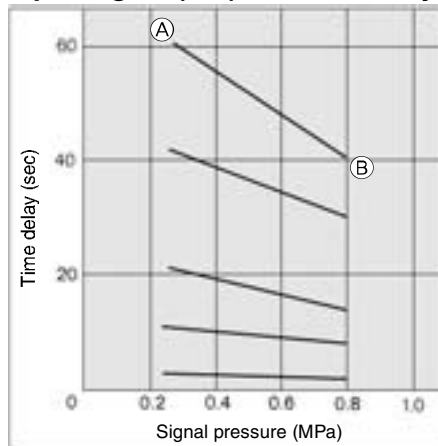
Combination of adjustable orifice and fixed flow allows transmission of a pneumatic signal after a fixed time period.



JIS Symbol

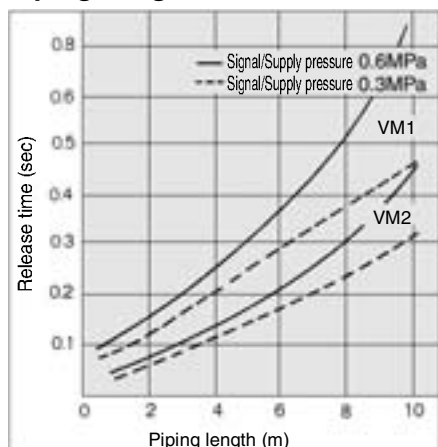


Input Signal (PIL) vs. Time Delay



Example) Ⓐ is the point, which is set by the input signal pressure 0.25 MPa, with a delay time of 60 sec. With the same status, if the input signal pressure is increased to 0.8 MPa, the delay time varies to the Ⓑ point (≒ 40 sec).

Piping Length vs. Release Time



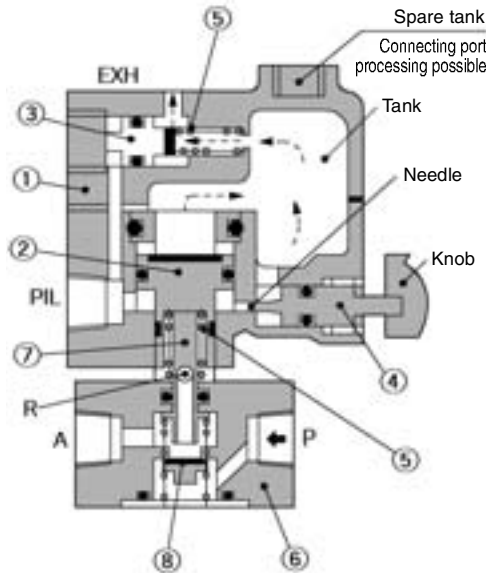
If the input signal (PIL) is turned OFF, the release time of the time delay valve changes depending upon the effective area of the valve and the length of piping. Please refer to the above graph for the standard values.

Model/Specifications

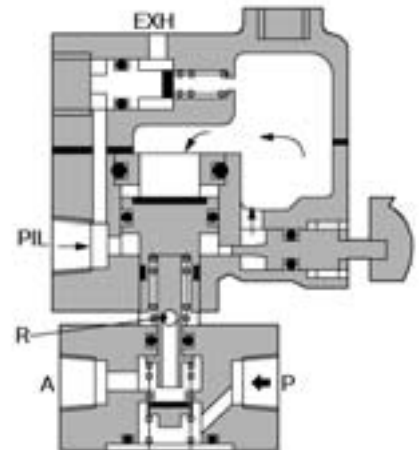
Model	VR2110-01
Supply pressure	0 to 1.0 MPa
Signal pressure	0.25 to 0.8 MPa
Time delay	0.5 to 60 s
Repeatability	±10% F.S.
Operating and fluid temperature	-5 to 60°C (No freezing)
Effective area	2.5 mm ²
Port size	1/8
Mass	500 g

Construction

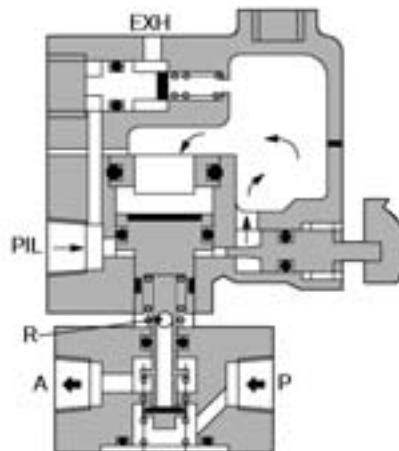
Non-actuated



Actuated before time set



Actuated after time set



Component Parts

No.	Description	Material	Note	No.	Description	Material	Note
1	Body	ADC	Platinum silver	5	Spring	Steel	
2	Piston	Brass, NBR	Rubber lined	6	Body	ZDC	Platinum silver
3	Piston	Brass, NBR	Rubber lined	7	Plunger	Stainless steel	
4	Needle	Brass		8	Valve	Brass, NBR	Rubber lined

Series VR2110

How to Order

VR2110 - **01** -

Option

X3	Secondary tank connection board Rc 1/4
X102	N.O. N.C. common type (With VM430)

Port size

01	Rc 1/8
N01	NPT 1/8
F01	G 1/8

Dimensions

Bracket mounted

Panel mounted

