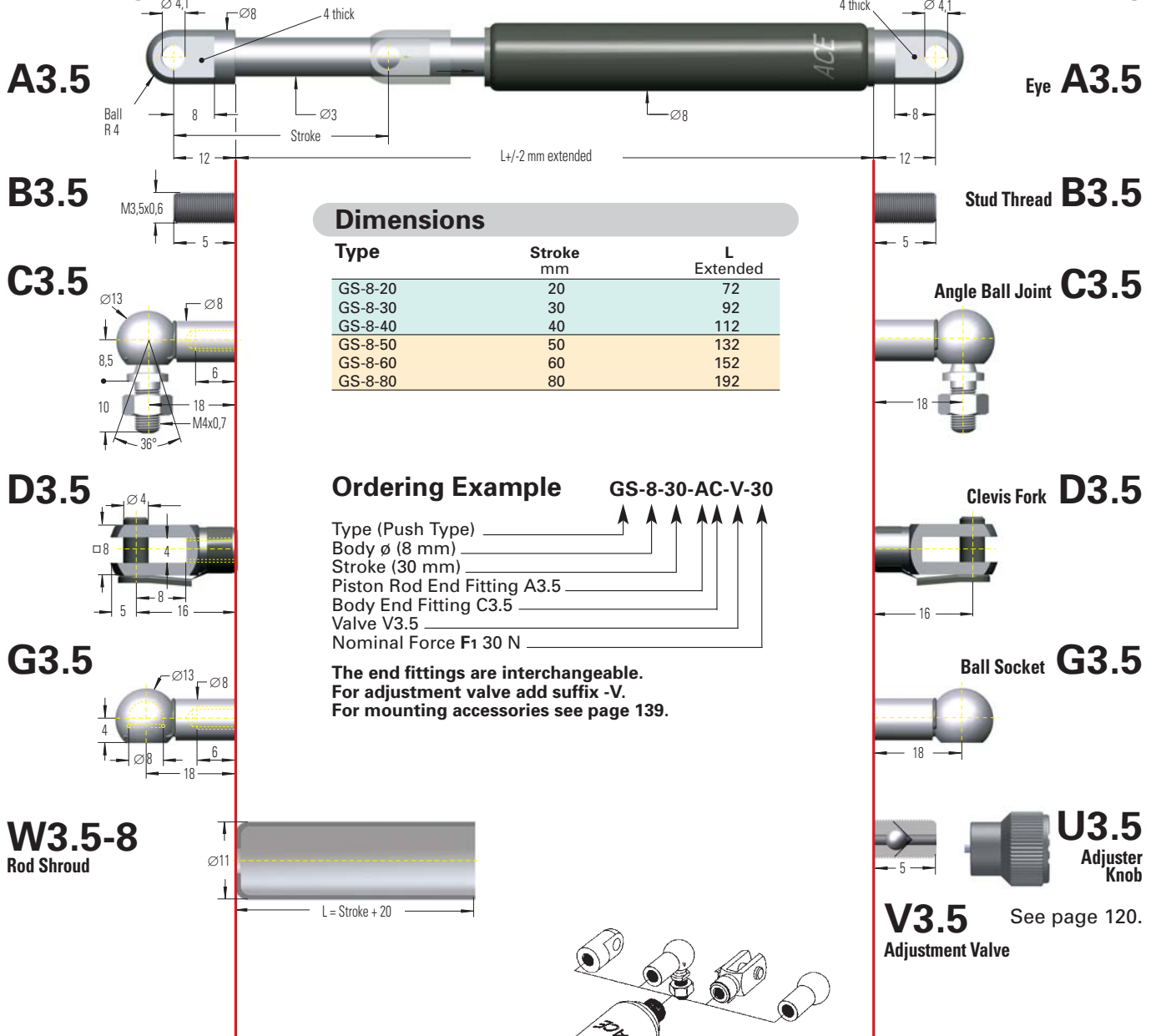


End Fitting

Standard Dimensions

End Fitting



A3.5

Eye A3.5

B3.5

Stud Thread B3.5

C3.5

Angle Ball Joint C3.5

D3.5

Clevis Fork D3.5

G3.5

Ball Socket G3.5

W3.5-8
Rod Shroud

U3.5
Adjuster Knob

V3.5 See page 120.
Adjustment Valve

Dimensions

Type	Stroke mm	L Extended
GS-8-20	20	72
GS-8-30	30	92
GS-8-40	40	112
GS-8-50	50	132
GS-8-60	60	152
GS-8-80	80	192

Ordering Example

GS-8-30-AC-V-30

Type (Push Type) _____
 Body \varnothing (8 mm) _____
 Stroke (30 mm) _____
 Piston Rod End Fitting A3.5 _____
 Body End Fitting C3.5 _____
 Valve V3.5 _____
 Nominal Force F1 30 N _____

The end fittings are interchangeable.
 For adjustment valve add suffix -V.
 For mounting accessories see page 139.

GS-8

Technical Data

ACE gas springs are self-contained and maintenance free. Standard gas springs with valve – ex stock.

Mounting position: Can be mounted in any position but we recommend mounting with piston rod downwards.

End position damping length: approx. 5 mm.

Progression: approx. 28%, F2 max. 130 N.

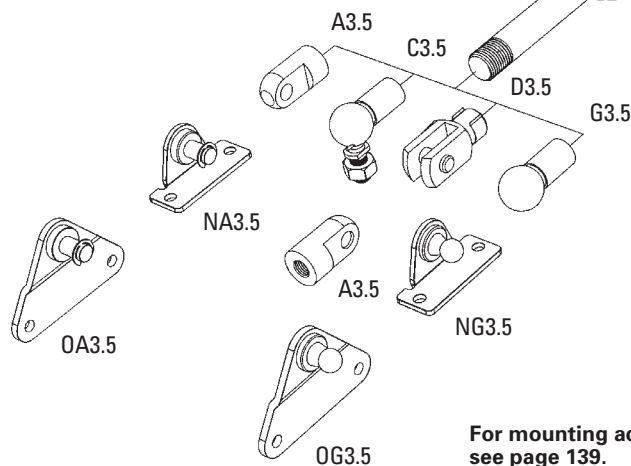
Operating temperature range: -20°C to +80°C.

Operating fluid: Nitrogen gas and oil (for end damping).

Available force range F1 at 20°C: 10 to 100 N.

Material: Body: powder coated steel. Piston rod: stainless steel. End fittings: zinc plated steel.

To special order: Without damping, extended length damping, special force curves, special lengths, alternative end fittings.

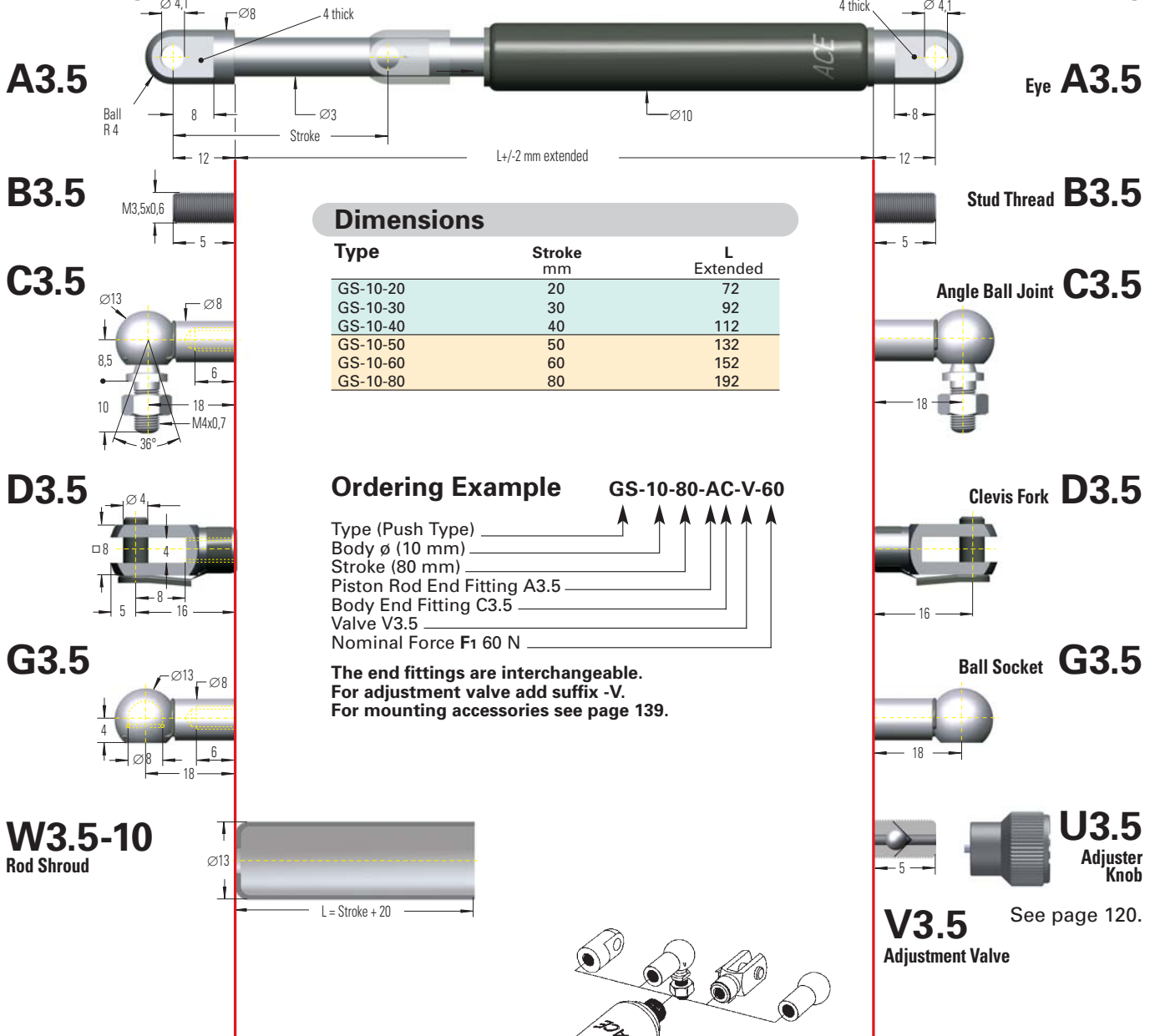


For mounting accessories see page 139.

End Fitting

Standard Dimensions

End Fitting



Dimensions

Type	Stroke mm	L Extended
GS-10-20	20	72
GS-10-30	30	92
GS-10-40	40	112
GS-10-50	50	132
GS-10-60	60	152
GS-10-80	80	192

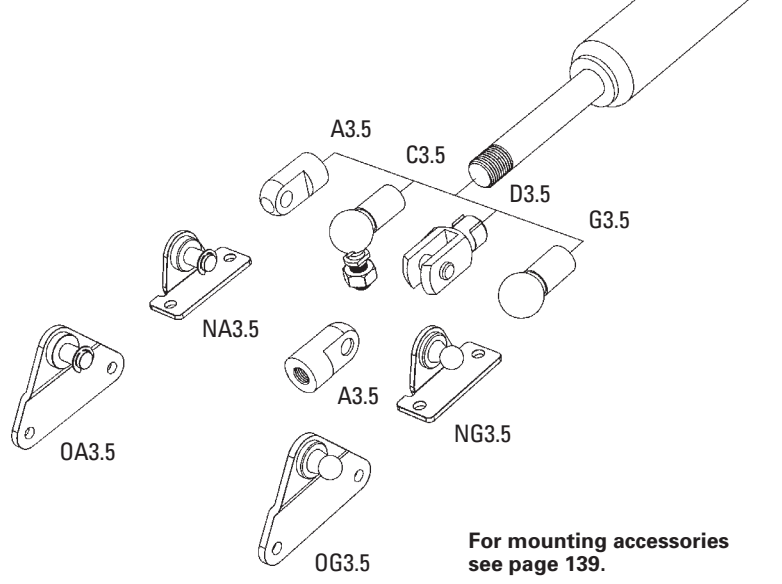
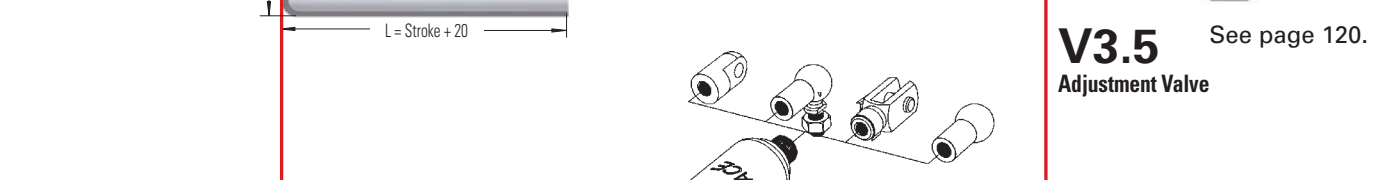
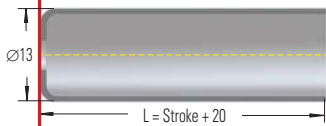
Ordering Example

GS-10-80-AC-V-60

Type (Push Type) _____
 Body ø (10 mm) _____
 Stroke (80 mm) _____
 Piston Rod End Fitting A3.5 _____
 Body End Fitting C3.5 _____
 Valve V3.5 _____
 Nominal Force F₁ 60 N _____

The end fittings are interchangeable.
 For adjustment valve add suffix -V.
 For mounting accessories see page 139.

W3.5-10 Rod Shroud



For mounting accessories see page 139.

Technical Data

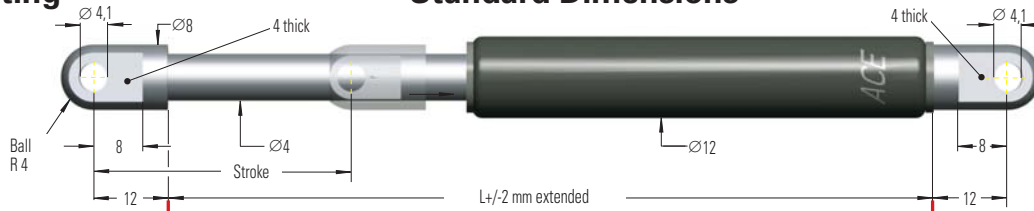
ACE gas springs are self-contained and maintenance free. Standard gas springs with valve – ex stock.
Mounting position: Can be mounted in any position but we recommend mounting with piston rod downwards.
End position damping length: approx. 5 mm.
Progression: approx. 20%, F₂ max. 120 N.
Operating temperature range: -20°C to +80°C.
Operating fluid: Nitrogen gas and oil (for end damping).
Available force range F₁ at 20°C: 10 to 100 N.
Material: Body: powder coated steel. Piston rod: stainless steel. End fittings: zinc plated steel.
To special order: Without damping, extended length damping, special force curves, special lengths, alternative end fittings.

End Fitting

Standard Dimensions

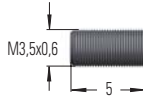
End Fitting

A3.5



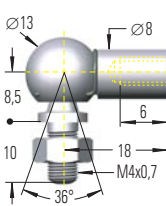
Eye A3.5

B3.5



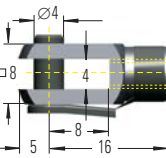
Stud Thread B3.5

C3.5



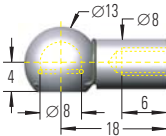
Angle Ball Joint C3.5

D3.5



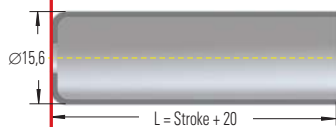
Clevis Fork D3.5

G3.5



Ball Socket G3.5

W3.5-12
Rod Shroud



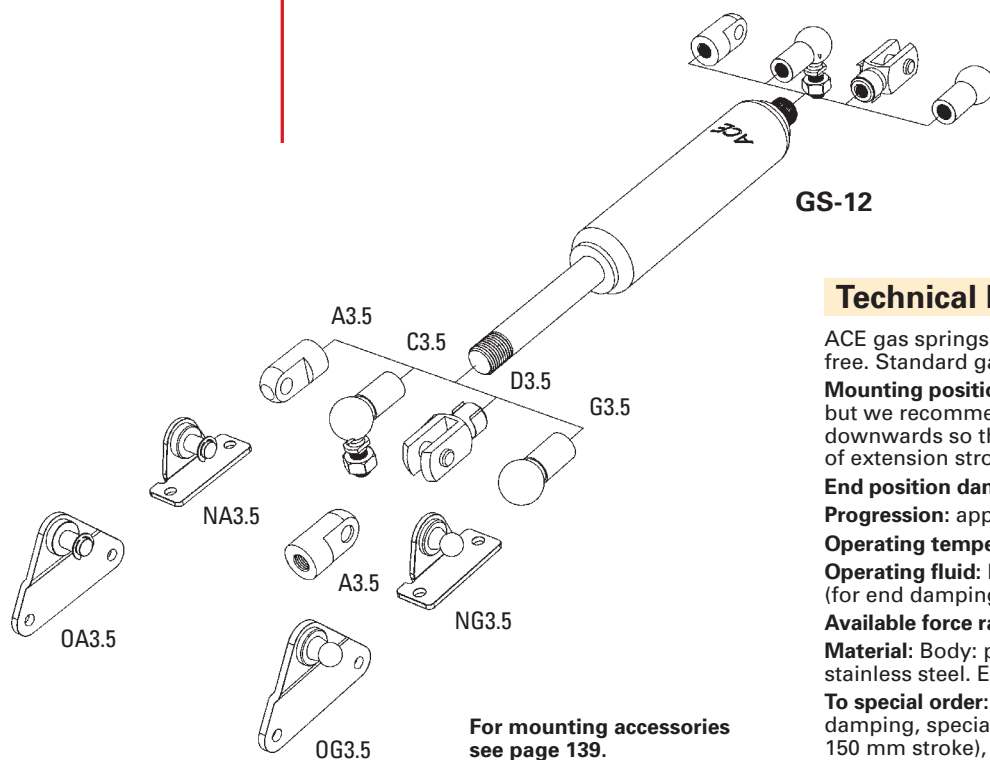
Dimensions

Type	Stroke mm	L Extended	max. F ₁
GS-12-20	20	72	180 N
GS-12-40	40	112	180 N
GS-12-50	50	132	180 N
GS-12-60	60	152	180 N
GS-12-80	80	192	150 N
GS-12-100	100	232	150 N
GS-12-120	120	272	120 N
GS-12-150	150	332	100 N

Ordering Example

Type (Push Type) _____
 Body ø (12 mm) _____
 Stroke (100 mm) _____
 Piston Rod End Fitting A3.5 _____
 Body End Fitting A3.5 _____
 Valve V3.5 _____
 Nominal Force F₁ 30 N _____

The end fittings are interchangeable.
For adjustment valve add suffix -V.
For mounting accessories see page 139.



Technical Data

ACE gas springs are self-contained and maintenance free. Standard gas springs with valve – ex stock.

Mounting position: can be mounted in any position but we recommend mounting with the piston rod downwards so that the damping is effective at end of extension stroke.

End position damping length: approx. 10 mm.

Progression: approx. 25 %, F₂ max. 225 N.

Operating temperature range: -20°C to +80°C.

Operating fluid: Nitrogen gas and oil (for end damping).

Available force range F₁ at 20°C: 10 to 180 N.

Material: Body: powder coated steel. Piston rod: stainless steel. End fittings: zinc plated steel.

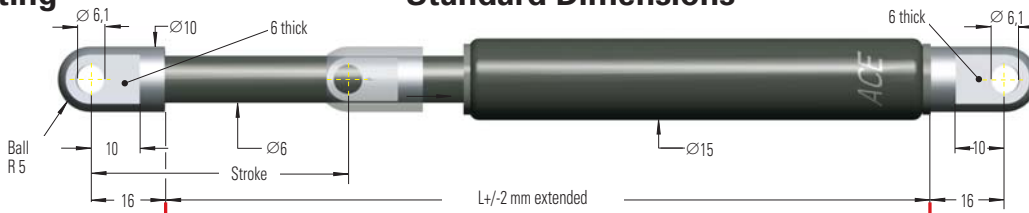
To special order: Without damping, extended length damping, special force curves, special lengths (max. 150 mm stroke), alternative end fittings.

End Fitting

Standard Dimensions

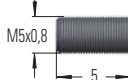
End Fitting

A5



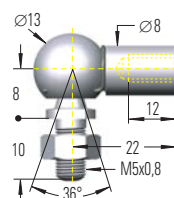
Eye A5

B5



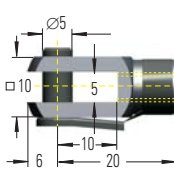
Stud Thread B5

C5



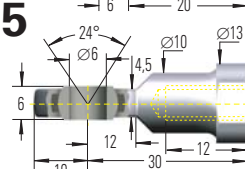
Angle Ball Joint C5

D5



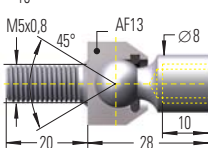
Clevis Fork D5

E5



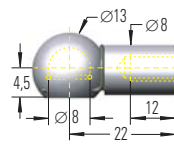
Swivel Eye E5

F5



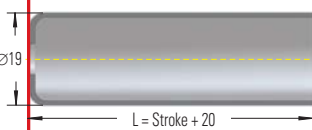
Inline Ball Joint F5

G5



Ball Socket G5

W5-15
Rod Shroud



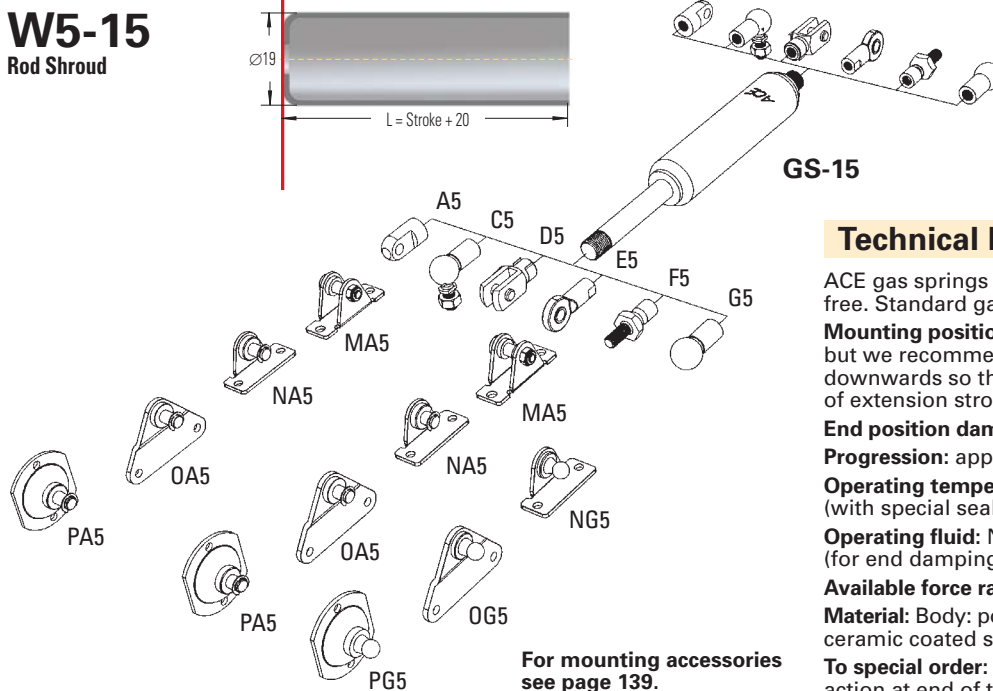
Dimensions

Type	Stroke mm	L Extended
GS-15-20	20	67
GS-15-40	40	107
GS-15-50	50	127
GS-15-60	60	147
GS-15-80	80	187
GS-15-100	100	227
GS-15-120	120	267
GS-15-150	150	327

Ordering Example GS-15-150-AC-V-400

Type (Push Type) _____
 Body ø (15 mm) _____
 Stroke (150 mm) _____
 Piston Rod End Fitting A5 _____
 Body End Fitting C5 _____
 Valve V5 _____
 Nominal Force F1 400 N _____

The end fittings are interchangeable.
 For adjustment valve add suffix -V.
 For mounting accessories see page 139.



For mounting accessories see page 139.

GS-15

Technical Data

ACE gas springs are self-contained and maintenance free. Standard gas springs with valve – ex stock.

Mounting position: Can be mounted in any position but we recommend mounting with the piston rod downwards so that the damping is effective at end of extension stroke.

End position damping length: approx. 10 mm.

Progression: approx. 27 %, F2 max. 500 N.

Operating temperature range: -20°C to +80°C (with special seals up to 200°C).

Operating fluid: Nitrogen gas and oil (for end damping).

Available force range F1 at 20°C: 20 to 400 N.

Material: Body: powder coated steel. Piston rod: ceramic coated steel. End fittings: zinc plated steel.

To special order: Without damping, increased damping action at end of travel, special force curves, special lengths, strokes, alternative end fittings, stainless steel (see page 134 to 137).

See page 120.

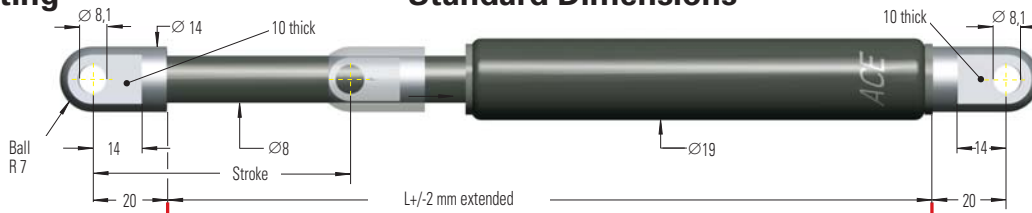
U5
Adjuster Knob

End Fitting

Standard Dimensions

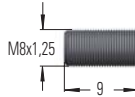
End Fitting

A8



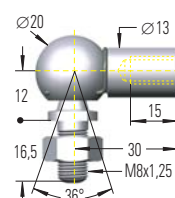
Eye A8

B8



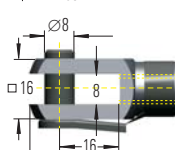
Stud Thread B8

C8



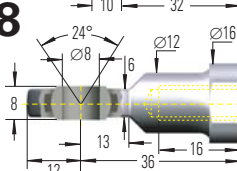
Angle Ball Joint C8

D8



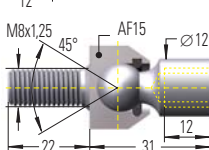
Clevis Fork D8

E8



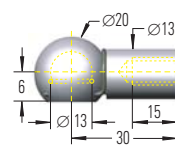
Swivel Eye E8

F8



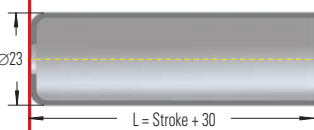
Inline Ball Joint F8

G8



Ball Socket G8

W8-19
Rod Shroud



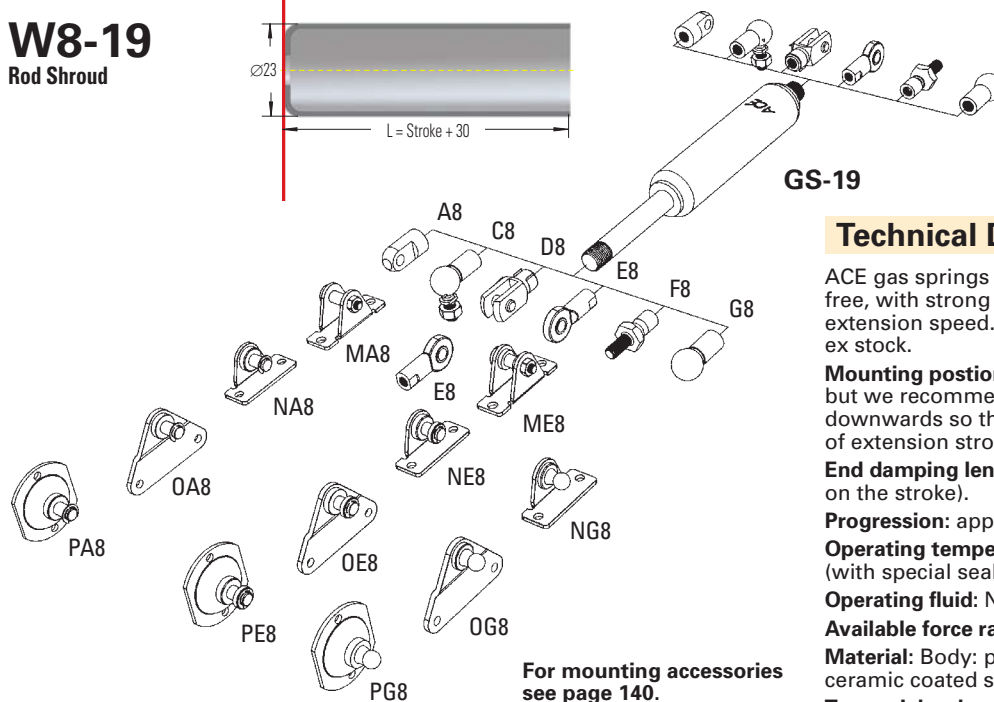
Dimensions

Type	Stroke mm	L Extended
GS-19-50	50	164
GS-19-100	100	264
GS-19-150	150	364
GS-19-200	200	464
GS-19-250	250	564
GS-19-300	300	664

Ordering Example GS-19-150-AC-V-600

Type (Push Type) _____
 Body ϕ (19 mm) _____
 Stroke (150 mm) _____
 Piston Rod End Fitting A8 _____
 Body End Fitting C8 _____
 Valve V8 _____
 Nominal Force F1 600 N _____

The end fittings are interchangeable.
 For adjustment valve add suffix -V.
 For mounting accessories see page 140.



For mounting accessories see page 140.

GS-19

V8
Adjustment Valve

Technical Data

ACE gas springs are self-contained and maintenance free, with strong end position damping and slow extension speed. Standard gas springs with valve - ex stock.

Mounting position: Can be mounted in any position but we recommend mounting with the piston rod downwards so that the damping is effective at end of extension stroke.

End damping length: approx. 20 to 60 mm (depending on the stroke).

Progression: approx. 36 to 42 %, F₂ max. 995 N.

Operating temperature: -20°C to +80°C (with special seals up to 200°C).

Operating fluid: Nitrogen gas and oil (for end damping).

Available force range F₁ at 20°C: 50 to 700 N.

Material: Body: powder coated steel. Piston rod: ceramic coated steel. End fittings: zinc plated steel.

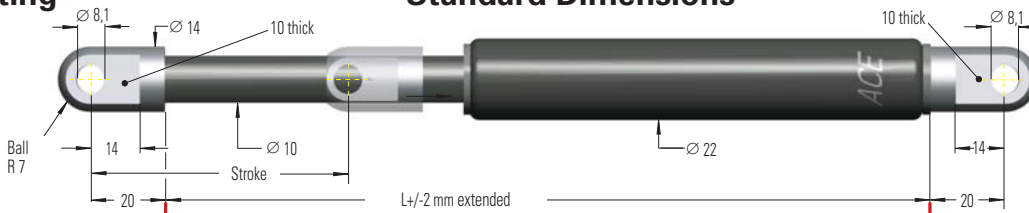
To special order: Without damping, standard length damping, special force curves, special lengths, alternative end fittings, stainless steel (see page 134 to 137).

End Fitting

Standard Dimensions

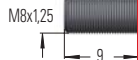
End Fitting

A8



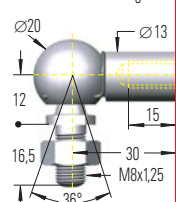
Eye A8

B8



Stud Thread B8

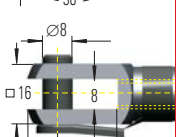
C8



Angle Ball Joint C8

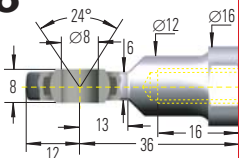
(Max. permitted force 1200 N)

D8



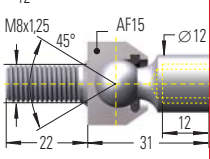
Clevis Fork D8

E8



Swivel Eye E8

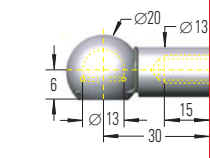
F8



Inline Ball Joint F8

(Max. permitted force 1200 N)

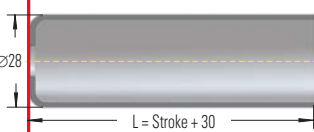
G8



Ball Socket G8

(Max. permitted force 1200 N)

W8-22
Rod Shroud



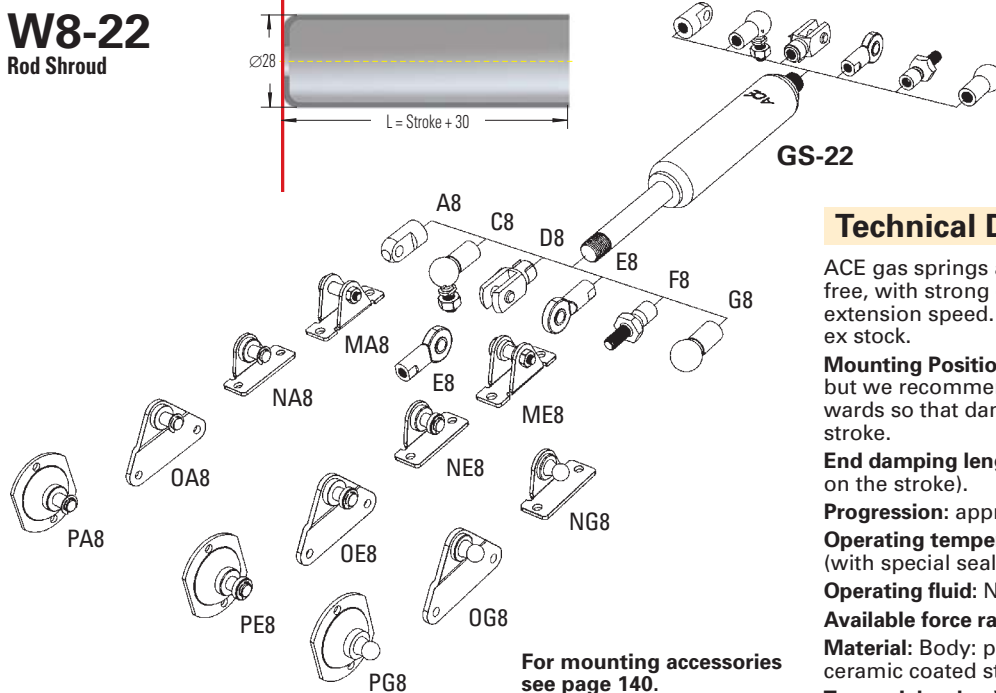
Dimensions

Type	Stroke mm	L Extended
GS-22-50	50	164
GS-22-100	100	264
GS-22-150	150	364
GS-22-200	200	464
GS-22-250	250	564
GS-22-300	300	664
GS-22-350	350	764
GS-22-400	400	864
GS-22-450	450	964
GS-22-500	500	1064
GS-22-550	550	1164
GS-22-600	600	1264
GS-22-650	650	1364
GS-22-700	700	1464

Ordering Example GS-22-150-AE-V-800

Type (Push type) _____
 Body ø (22 mm) _____
 Stroke (150 mm) _____
 Piston Rod End Fitting A8 _____
 Body End Fitting E8 _____
 Valve V8 _____
 Nominal Force F₁ 800 N _____

The end fittings are interchangeable.
 For adjustment valve add suffix -V.
 For mounting accessories see page 140.



For mounting accessories see page 140.

Technical Data

ACE gas springs are self-contained and maintenance free, with strong end position damping and slow extension speed. Standard gas springs with valve – ex stock.

Mounting Position: Can be mounted in any position but we recommend mounting with piston rod downwards so that damping is effective at end of extension stroke.

End damping length: approx. 20 to 70 mm (depending on the stroke).

Progression: approx. 39 to 50 %, F₂ max. 1950 N.

Operating temperature range: -20°C to +80°C (with special seals up to 200°C).

Operating fluid: Nitrogen gas and oil (for end damping).

Available force range F₁ at 20°C: 80 to 1300 N.

Material: Body: powder coated steel. Piston rod: ceramic coated steel. End fittings: zinc plated steel.

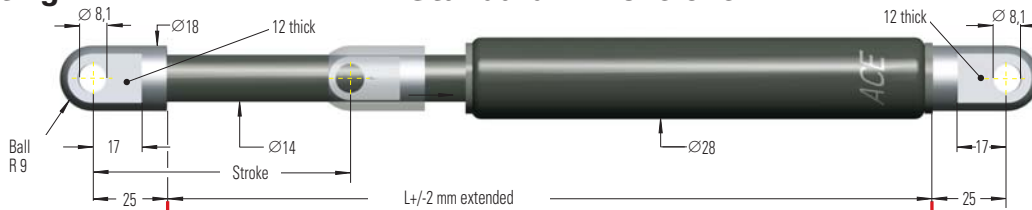
To special order: Without damping, standard length damping, special force curves, special lengths, alternative end fittings, stainless steel (see page 134 to 137).

End Fitting

Standard Dimensions

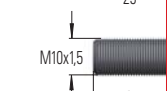
End Fitting

A10



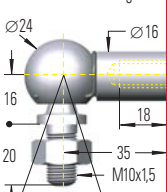
Eye A10

B10



Stud Thread B10

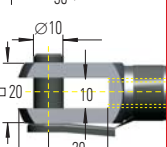
C10



Angle Ball Joint C10

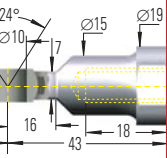
(Max. permitted force 1800 N)

D10



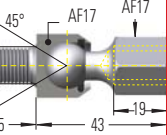
Clevis Fork D10

E10



Swivel Eye E10

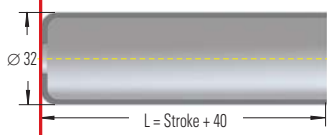
F10



Inline Ball Joint F10

(Max. permitted force 1800 N)

W10-28
Rod Shroud



Dimensions

Type	Stroke mm	L Extended
GS-28-100	100	262
GS-28-150	150	362
GS-28-200	200	462
GS-28-250	250	562
GS-28-300	300	662
GS-28-350	350	762
GS-28-400	400	862
GS-28-450	450	962
GS-28-500	500	1062
GS-28-550	550	1162
GS-28-600	600	1262
GS-28-650	650	1362
GS-28-700	700	1462
GS-28-750	750	1562

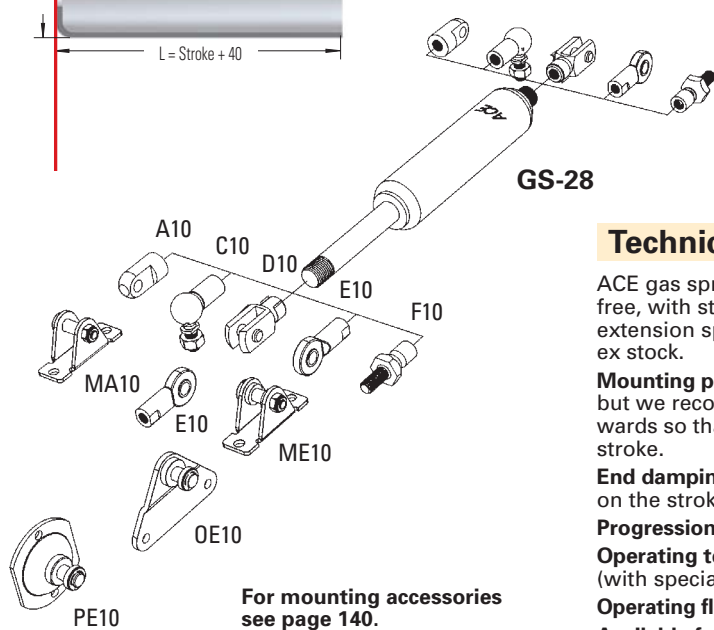
Ordering Example GS-28-150-EE-V-1200

Type (Push type) _____
 Body ø (28 mm) _____
 Stroke (150 mm) _____
 Piston Rod End Fitting E10 _____
 Body End Fitting E10 _____
 Valve V10 _____
 Nominal Force F₁ 1200 N _____

The end fittings are interchangeable.
 For adjustment valve add suffix -V.
 For mounting accessories see page 140.

U10
Adjuster Knob
See page 120.

V10
Adjustment Valve



For mounting accessories see page 140.

Technical Data

ACE gas springs are self-contained and maintenance free, with strong end position damping and slow extension speed. Standard gas springs with valve – ex stock.

Mounting position: Can be mounted in any position but we recommend mounting with piston rod downwards so that damping is effective at end of extension stroke.

End damping length: approx. 30 to 70 mm (depending on the stroke).

Progression: approx. 60 to 95 %, F₂ max. 4875 N.

Operating temperature range: -20°C to +80°C (with special seals up to 200°C).

Operating fluid: Nitrogen gas and oil (for end damping).

Available force range F₁ at 20°C: 150 to 2500 N.

Material: Body: powder coated steel. Piston rod: ceramic coated steel. End fittings: zinc plated steel.

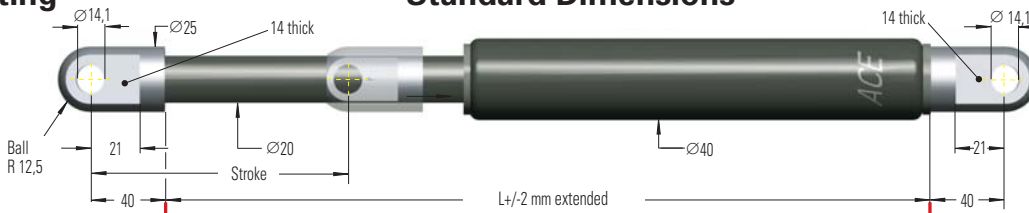
To special order: without damping, standard length damping, special force curves, special lengths, alternative end fittings, stainless steel.

End Fitting

Standard Dimensions

End Fitting

A14

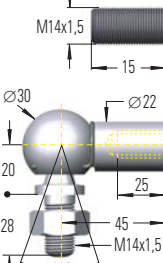


Eye A14

B14

Stud Thread B14

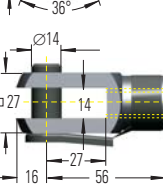
C14



Angle Ball Joint C14

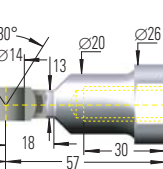
(Max. permitted force 3200 N)

D14



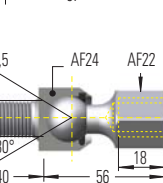
Clevis Fork D14

E14



Swivel Eye E14

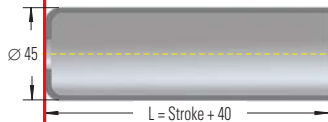
F14



Inline Ball Joint F14

(Max. permitted force 3200 N)

W14-40
Rod Shroud



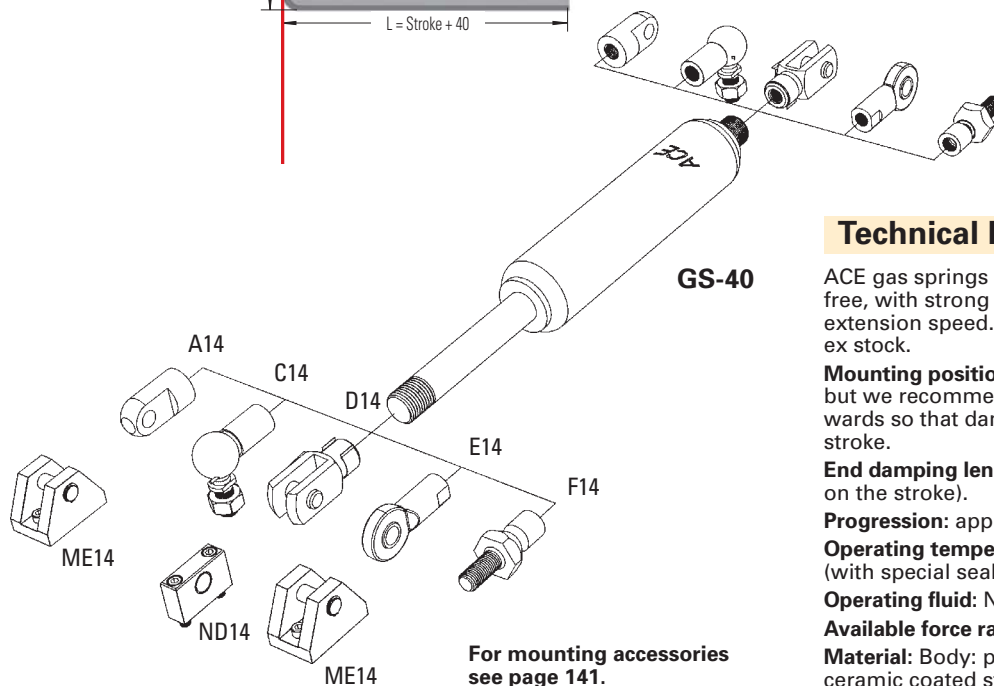
Dimensions

Type	Stroke mm	L Extended
GS-40-100	100	317
GS-40-150	150	417
GS-40-200	200	517
GS-40-300	300	717
GS-40-400	400	917
GS-40-500	500	1117
GS-40-600	600	1317
GS-40-800	800	1717
GS-40-1000	1000	2117

Ordering Example GS-40-150-DD-V-3500

Type (Push type) _____
 Body ø (40 mm) _____
 Stroke (150 mm) _____
 Piston Rod End Fitting D14 _____
 Body End Fitting D14 _____
 Valve V14 _____
 Nominal Force F₁ 3500 N _____

The end fittings are interchangeable.
 For adjustment valve add suffix -V.
 For mounting accessories see page 141.



For mounting accessories see page 141.

U14
Adjuster Knob

See page 120.

V14
Adjustment Valve

Technical Data

ACE gas springs are self-contained and maintenance free, with strong end position damping and slow extension speed. Standard gas springs with valve – ex stock.

Mounting position: Can be mounted in any position but we recommend mounting with piston rod downwards so that damping is effective at end of extension stroke.

End damping length: approx. 30–70 mm (depending on the stroke).

Progression: approx. 47 to 53 %, F₂ max. 7650 N.

Operating temperature range: -20°C to +80°C (with special seals up to 200°C).

Operating fluid: Nitrogen gas and oil (for end damping).

Available force range F₁ at 20°C: 500 to 5000 N.

Material: Body: powder coated steel. Piston rod: ceramic coated steel. End fittings: zinc plated steel.

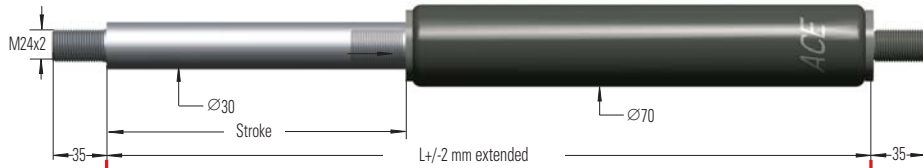
To special order: Without damping, standard length damping, special force curves, special lengths, alternative end fittings, stainless steel.

End Fitting

Standard Dimensions

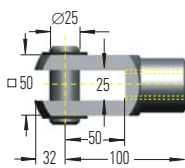
End Fitting

B24



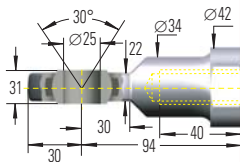
Stud Thread **B24**

D24



Clevis Fork **D24**

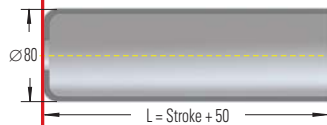
E24



Swivel Eye **E24**

W24-70

Rod Shroud



Dimensions

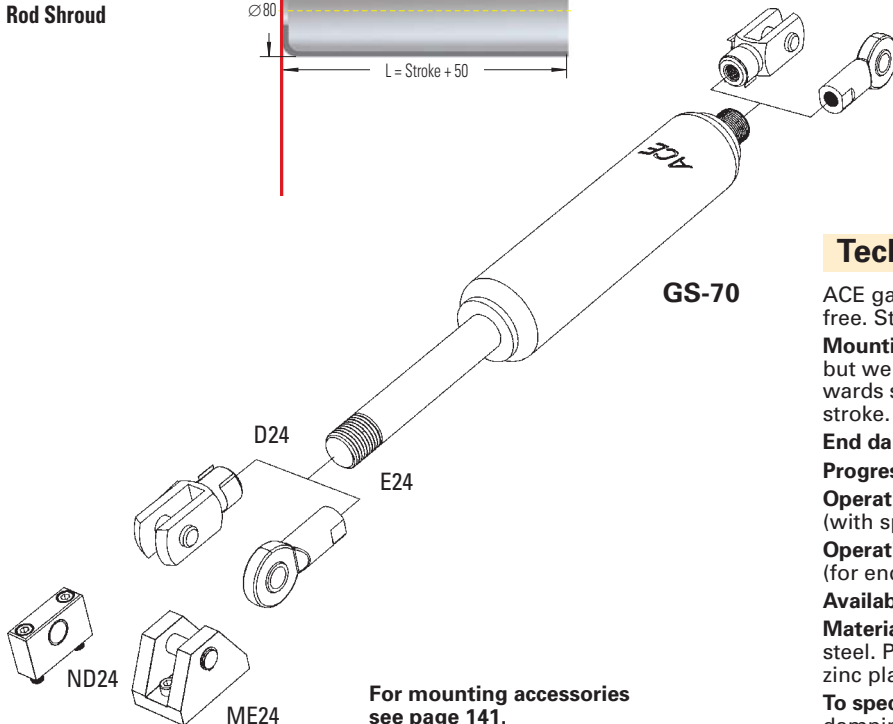
Type	Stroke mm	L Extended
GS-70-100	100	320
GS-70-200	200	520
GS-70-300	300	720
GS-70-400	400	920
GS-70-500	500	1120
GS-70-600	600	1320
GS-70-700	700	1520
GS-70-800	800	1720

Ordering Example GS-70-200-EE-8000

Type (Push Type) _____
 Body ø (70 mm) _____
 Stroke (200 mm) _____
 Piston Rod End Fitting E24 _____
 Body End Fitting E24 _____
 Nominal Force F₁ 8000 N _____

The end fittings are interchangeable.
 For mounting accessories see page 141.
 Standard version includes valve.

GS-70



For mounting accessories see page 141.

Technical Data

ACE gas springs are self-contained and maintenance free. Standard gas springs with valve.

Mounting position: Can be mounted in any position but we recommend mounting with piston rod downwards so that damping is effective at end of extension stroke.

End damping length: approx. 10 mm.

Progression: approx. 25%, F₂ max. 16 250 N.

Operating temperature range: -20°C to +80°C (with special seals up to 200°C).

Operating fluid: Nitrogen gas and oil (for end damping).

Available force range F₁ at 20°C: 2 000 to 13 000 N.

Material: Body: powder coated steel or zinc plated steel. Piston rod: hard chrome plated. End fittings: zinc plated steel.

To special order: Without damping, extended length damping, special force curves, special lengths, alternative end fittings, stainless steel.