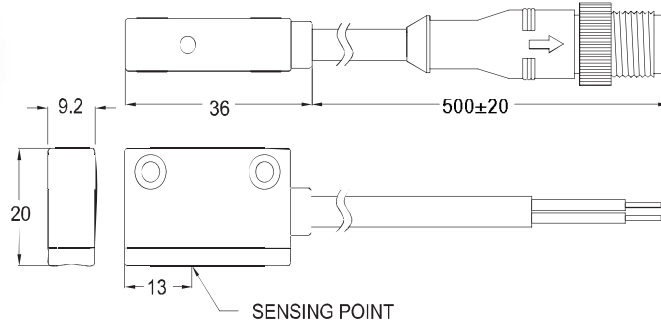
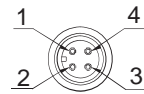


## ■ DIMENSION



Unit:mm

## ■ QD PINOUT



1:N/C (NO connect)  
2:N/C (NO connect)  
3:Blue  
4:Brown

## ■ SPECIFICATION

TYPE	G -1000D
CONNECT DIAGRAM	
CHARACTERISTICS	
WIRING METHOD	2-Wire Type
SWITCHING LOGIC	Solid State Output, Normally Open
SENSOR TYPE	--
OPERATING VOLTAGE	10~28 V DC
SWITCHING CURRENT	5-50 mA max.
CONTACT RATING	1.5 W max.
CURRENT CONSUMPTION	--
VOLTAGE DROP	5 V max.
LEAKAGE CURRENT	Less Than 1 mA
INDICATOR	Red LED : unstable sensing range    Green LED : stable sensing range
CABLE	ø5.4, 2C, PVC
OPERATING TIME	50 ms max.
MAGNETIC FEILD RESISTANCE (NOTE 4)	16000A
MAGNET REQUIREMENT (NOTE 1)	80 Gauss
TEMPERATURE RANGE	-10~60°C
SHOCK (NOTE 2)	30 G
VIBRATION (NOTE 3)	9 G
ENCLOSURE CLASSIFICATION	IEC 529 IP 67
PROTECTION CIRCUIT	Surge Suppression, Reverse Polarity

## NOTE:

1. Measuring standard target: ø15.5Xø8X5t (Anisotropy rubber magnet)
2. Sin wave / X, Y, Z 3 directions / 3 times each direction / 11 ms each time.
3. Double amplitude 1.5 mm / 10Hz~55Hz~10Hz (Sweep 1 min) / X, Y, Z 3 directions / 1 hour each time.
4. The operational distance can be 0 mm between KT-1000D and welding gun (welding conductor or cable) when the welding current less than 16000 A.

## ■ ORDERING INFORMATION

G - 1 0 0 0 D - 

Cable Length / Connector

Blank: With 3 meter cable  
2M: With 2 meter cable  
4M: With 4 meter cable  
QD : With M12, 4 Pin male connector

Mounting clamps

BP - 4 0 4 5

Cylinder bore size

40: ø40  
50: ø50  
63: ø63

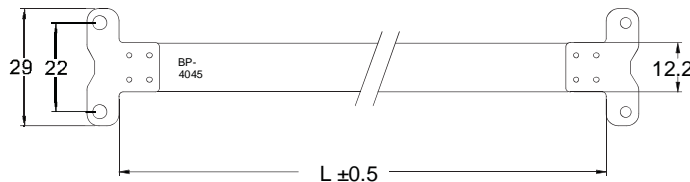
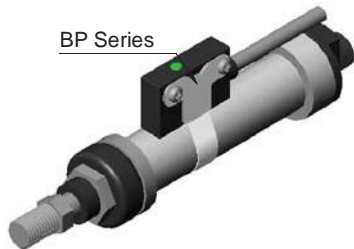
Cylinder tube outer diameter

45: ø45  
47: ø47  
55: ø55  
58: ø58  
68: ø68  
72: ø72

## ■ MOUNTING CLAMPS

### BP

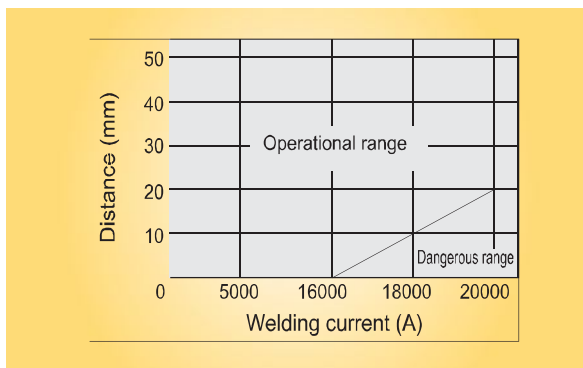
clamp is designed for mounting GT-1000D on round cylinder.



No.	Model	" L "
1	BP-4045	154
2	BP-4047	161
3	BP-5055	188
4	BP-5058	197
5	BP-6368	228
6	BP-6372	240

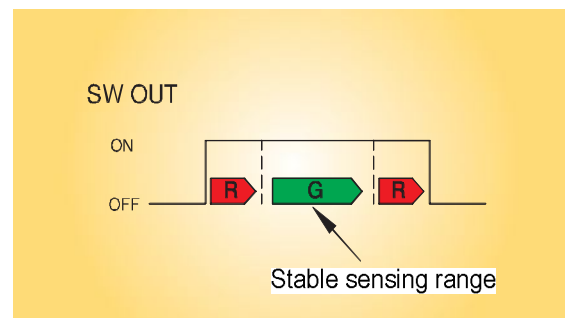
Unit:mm

## ■ WELD-FIELD IMMUNE



The operational distance can be 0 mm between KT-1000D and welding gun (welding conductor or cable) when the welding current less than 16000 A.

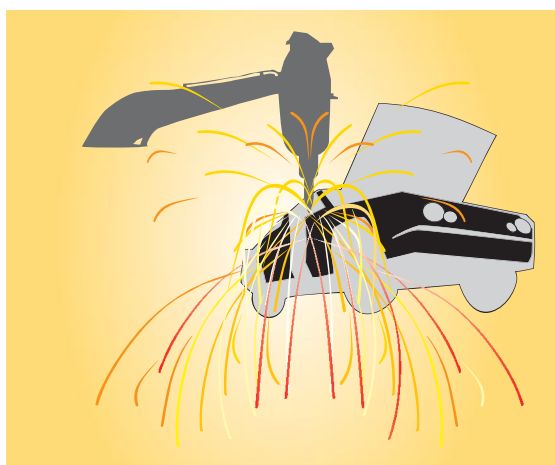
## ■ SWITCH OUTPUT / INDICATOR



The function of three sensing range indicators ensures the preciseness of setting position.

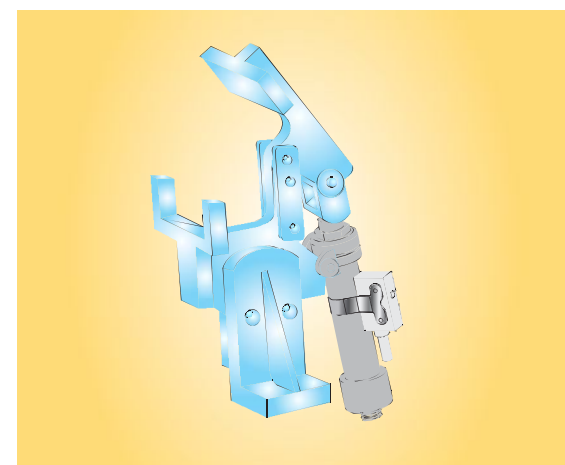
Unstable sensing range : Red LED light UP  
Stable sensing range : Green LED light UP

## ■ APPLICATION ENVIRONMENT



The KT-1000D can be applied in the strong magnetic field environment such as automotive manufacturing or areas near welding machine. When KT-1000D detects the magnetic AC field (50 or 60 Hz) it will keep the status of output and will not be effected.

## ■ APPLICATION MOUNTING



The KT-1000D detects the position of the cylinder piston and it is especially suitable for clamp cylinder.