

G-06 SERIES

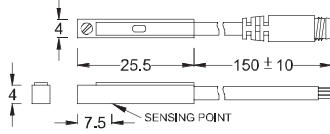


Magnetic switch

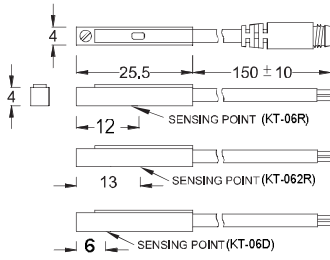


■ DIMENSION

G-06N, G-06P / G-06N-QD, G-06P-QD



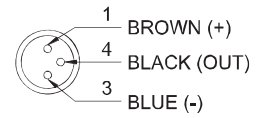
G-06R, G-062R, G-06D /
G-06R-QD, G-062R-QD, G-06D-QD



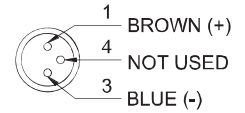
Unit:mm

■ QD PINOUT

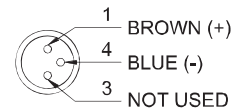
*3 wire QD wiring



*2 wire QD wiring



*2 wire EQD wiring



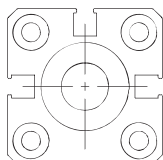
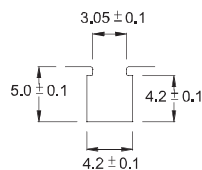
■ SPECIFICATION

TYPE	G -06R	G -062R	G -06D	G -06N	G -06P
CONNECT DIAGRAM					
CHARACTERISTICS					
WIRING METHOD	2-Wire Type			3-Wire Type	
SWITCHING LOGIC	SPST, Normally Open			Solid State Output, Normally Open	
SENSOR TYPE	Reed Switch			NPN Current Sinking PNP Current Sourcing	
OPERATING VOLTAGE	5~120V DC/AC	5~240V DC/AC	10~28V DC	5~30V DC	
SWITCHING CURRENT	100 mA max.			200 mA. max.	
CONTACT RATING	10 W max.			6W max.	
CURRENT CONSUMPTION	--			8 mA @ 24V DC max.	
VOLTAGE DROP	3.5 V max.			1 V @200mA max.	
LEAKAGE CURRENT	--			0.01 mA max.	
INDICATOR	Red LED	Green LED	Red LED		Green LED
CABLE	ø2.8, 2C, PUR			ø2.8, 3C, PUR	
OPERATING FREQUENCY	200 Hz			1000 Hz	
MAGNET REQUIREMENT (NOTE 1)	70 Gauss			30 Gauss	
TEMPERATURE RANGE	-10~70°C				
SHOCK (NOTE 2)	30 G			50 G	
VIBRATION (NOTE 3)	9 G				
ENCLOSURE CLASSIFICATION	IEC 529 IP 67				
PROTECTION CIRCUIT (NOTE 4)	1			2,3,4	

NOTE:

- Measuring standard target: ø15.5xø8x5t (Anisotropy rubber magnet)
- Sin wave / X, Y, Z 3 directions / 3 times each direction / 11 ms each time.
- Double amplitude 1.5 mm / 10Hz~55Hz~10Hz (Sweep 1 min) / X, Y, Z 3 directions / 1 hour each time.
- 1=None / 2=Short-circuit / 3=Power Source Reverse polarity / 4=Surge Suppression

■ GROOVE DIMENSION



Unit:mm

GENTLE AUTOMATIC SOLUTION SDN BHD

No.36, Jalan Industri USJ 1/13, Taman Perindustrian USJ 1, 47600 Subang Jaya, Selangor.

TEL: 603-8023 7743 / 8743 FAX: 603-8023 9743 email:sales@gentle.com.my / gpauto@tm.net.my