

Air-hydro Converter Series *CCT*



How to Order

CCT 63 – 100 – []

• CE-compliant

| | |
|-----|----------------------------------|
| Nil | — |
| Q | CE-compliant (Refer to Table 1.) |

• Effective oil level stroke (mm)

• Converter nominal size/stroke (mm)

| | |
|-----|-----------------------------------|
| 63 | 50, 100, 200, 300, 400, 500 |
| 100 | 100, 200, 300, 400, 500, 600 |
| 160 | 200, 300, 400, 500, 600, 700, 800 |

Specifications

| | |
|-------------------------------|--|
| Operating pressure | 0 to 0.7 MPa |
| Proof pressure | 1.05 MPa |
| Ambient and fluid temperature | 5 to 50°C |
| Fluid | Turbine oil (40 to 100 mm ² /s) |

Converter Standard Effective Oil Level Stroke/Effective Volume (cm³)

| Converter nominal size (mm) | Standard effective oil level stroke (mm) | | | | | | | | | Limited flow* (dm ³ /min) |
|-----------------------------|--|-----|------|------|------|------|-------|-------|-------|--------------------------------------|
| | 50 | 100 | 200 | 300 | 400 | 500 | 600 | 700 | 800 | |
| 63 | 150 | 300 | 600 | 890 | 1190 | 1480 | — | — | — | 36 |
| 100 | — | 750 | 1510 | 2260 | 3010 | 3770 | 4520 | — | — | 88 |
| 160 | — | — | 3660 | 5490 | 7320 | 9150 | 10980 | 12810 | 14640 | 217 |

*Limited flow shows the limit of converter oil level speed (200 mm/s) which can maintain stability of converter oil level.

Table 1 CE-compliant

| | |
|-------------------|--------------------------------|
| Applicable model | CE marking applicable standard |
| CCT160-400 to 800 | Directive 97/23/EC Category I |

CCT40 — Effective oil level stroke

Because the CCT40 is a converter for an actuator with a small capacity, it cannot be made into an air-hydro unit. Instead, use an individual CC valve unit or a speed controller (AS2000, AS3000, AS4000, etc.) through a pipe connection.



Specifications

| | |
|-------------------------------|--|
| Operating pressure | 0 to 0.7 MPa |
| Proof pressure | 1.05 MPa |
| Ambient and fluid temperature | 5 to 50°C |
| Fluid | Turbine oil (40 to 100 mm ² /s) |
| Nominal size | 40 mm |

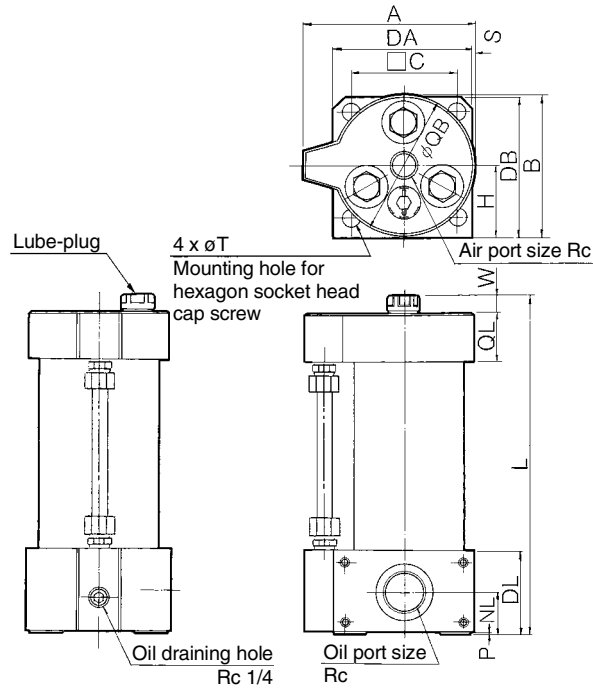
Converter Standard Effective Oil Level Stroke/Effective Volume

| Standard effective oil level stroke (mm) | 50 | 100 | 150 | 200 | 300 |
|--|----|-----|-----|-----|-----|
| Effective volume (cm ³) | 60 | 120 | 180 | 250 | 370 |
| Limited flow (dm ³ /min) | 15 | | | | |

*Limited flow shows the limit of converter oil level speed (200 mm/s) which can maintain stability of converter oil level.

Dimensions

CCT63/CCT100/CCT160



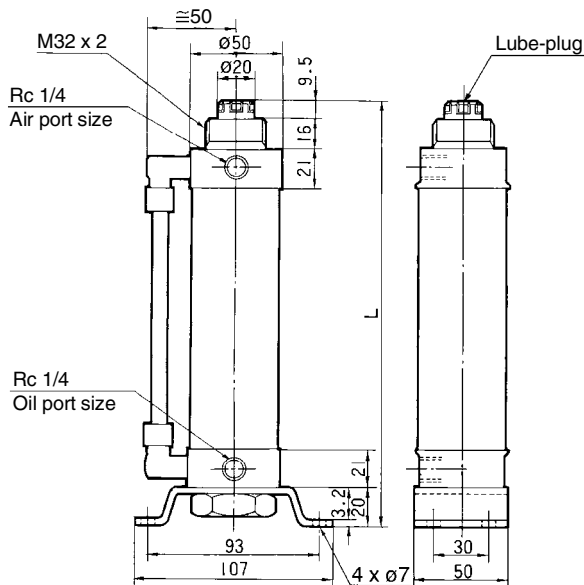
| Model | Air port size Rc | Oil port size Rc | A | B | □C | DA | DB | DL | H | NL | P | QB | QL | S | T* | W |
|----------|------------------|------------------|-------|-----|-----|-----|-----|----|----|----|---|-----|----|---|----|-----|
| CCT63-□ | 3/8 | 3/4 | 104 | 88 | 64 | 86 | 88 | 53 | 45 | 28 | 3 | 86 | 30 | 0 | 11 | 9.5 |
| CCT100-□ | 1/2 | 1 | 139 | 125 | 92 | 116 | 123 | 61 | 65 | 33 | 5 | 120 | 32 | 2 | 13 | 7 |
| CCT160-□ | 3/4 | 1 1/4 | 202.5 | 185 | 144 | 180 | 183 | 60 | 93 | 29 | 0 | 185 | 46 | 2 | 20 | 7 |

L Dimension

| Effective oil level stroke (mm) | 50 | 100 | 200 | 300 | 400 | 500 | 600 | 700 | 800 |
|---------------------------------|-------|-------|-------|-------|-------|-------|-----|-----|------|
| CCT63-□ | 228.5 | 278.5 | 378.5 | 503.5 | 603.5 | 728.5 | — | — | — |
| CCT100-□ | — | 286 | 386 | 511 | 611 | 736 | 836 | — | — |
| CCT160-□ | — | — | 399 | 524 | 624 | 749 | 849 | 949 | 1049 |

* Hexagon socket head cap screw is used for mounting.

CCT40



L Dimension (Effective oil level stroke) (mm)

| Effective oil level stroke (mm) | 50 | 100 | 150 | 200 | 300 |
|---------------------------------|-------|-------|-------|-------|-------|
| L | 213.5 | 263.5 | 313.5 | 363.5 | 463.5 |