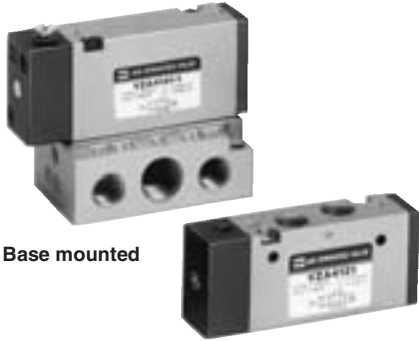


# 5 Port Air Operated Valve

# Series VZA4000



Base mounted

Body ported

## Model

Valve model	Function	Port size Rc	Flow characteristics <sup>(2)</sup>						Pilot port size	Pilot port piping location		
			1→4/2(P→A/B)			4/2→5/3(A/B→EA/EB)						
			C [dm <sup>3</sup> /(s·bar)]	b	Cv	C [dm <sup>3</sup> /(s·bar)]	b	Cv				
Body ported	2 position	Single	1/8	2.0	0.14	0.49	1.7	0.25	0.44	M5 x 0.8	Body side	
				2.0	0.14	0.49	1.7	0.25	0.44			
	3 position	Closed center		1.9	0.15	0.47	1.7	0.25	0.44			
		Exhaust center		1.9	0.15	0.47	1.7	0.25	0.44			
Base mounted (With sub-plate)	2 position	Single	1/8	2.4	0.23	0.56	2.2	0.19	0.54	M5 x 0.8	Sub-plate side	
			1/4	2.4	0.23	0.56	2.2	0.19	0.54		Body side	
			1/8								Sub-plate side	
			1/4									
		Double	1/8								2.4	0.23
			1/4	Body side								
			1/8									
			1/4									
	3 position	Closed center	1/8	2.3	0.19	0.54	2.3	0.21	0.54	M5 x 0.8	Sub-plate side	
			1/4								Body side	
			1/8									
			1/4									
		Exhaust center	1/8	2.3	0.21	0.52	2.2	0.22	0.52		M5 x 0.8	Sub-plate side
			1/4									Body side
			1/8									
			1/4									

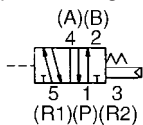
Compatibility with universal porting is possible except for with the single type.

Note 1) Model number for base mounted style without sub-plate is VZA4□41-<sub>1</sub>.  
Note 2) Value at the maximum port size

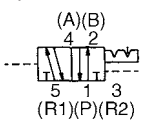
## JIS symbol

Body ported

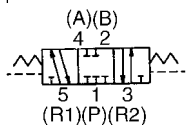
2 position single



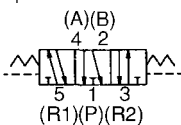
2 position double



3 position closed center

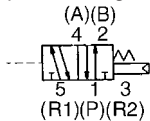


3 position exhaust center

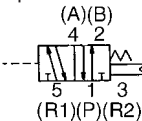


Base mounted

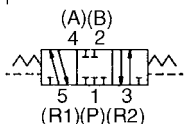
2 position single



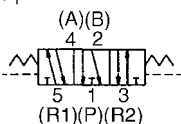
2 position double



3 position closed center



3 position exhaust center



## Foot Bracket

Air operated valve model no.	VZA4121-01-F
------------------------------	--------------

## How to Order Manifold Base

Use the same manifold bases as the VZ4000.

(For VZA4000) VV5ZA4- Specify the same manifold part number as VV5Z4.

\* To order valves and blanking plate assembly mounted onto the manifold, list valves and blanking plate assembly with manifold base part number.

<Example: Body ported>

VV5ZA4-20-081.....1 pc.

VZA4121-01.....4 pcs.

VZA4221-01.....3 pcs.

VVZ4000-31A-1.....1 pc.

<Example: Base mounted>

VV5ZA4-50-081-02.....1 pc.

VZA4141-2.....4 pcs.

VZA4241-2.....3 pcs.

VVZ4000-31A-2.....1 pc.

## Sub-plate Assembly Part No.: VZA4000-S-<sup>01</sup><sub>02</sub> □

\* Mounting bolt and gasket are not included.

• Thread type

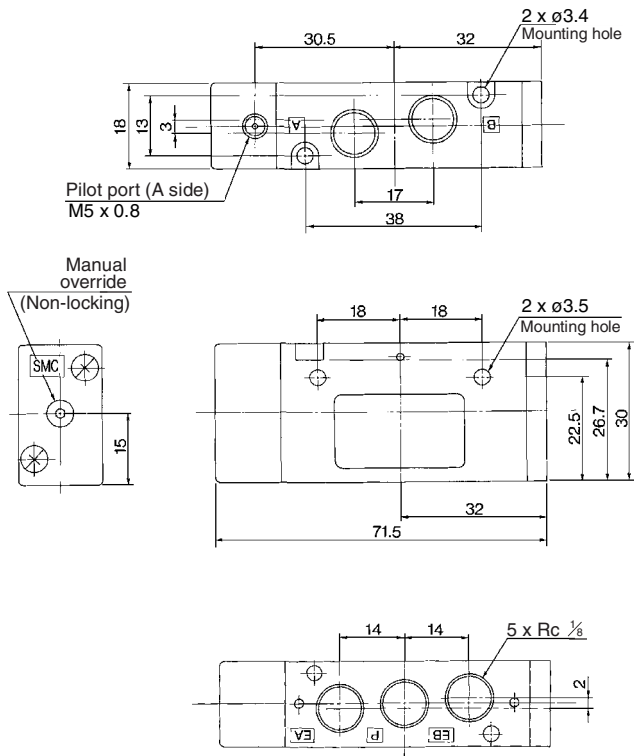
Nil	Rc
N	NPT
T	NPTF
F	G

## Caution

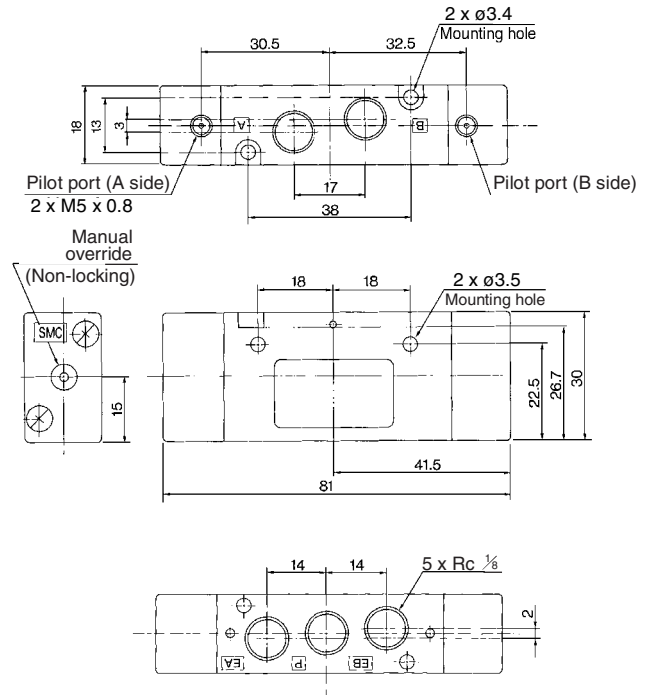
Be sure to read this before handling. Refer to front matters 58 and 59 for Safety Instructions and pages 3 to 7 for 3/4/5 Port Solenoid Valve Precautions.

**Dimensions: Body Ported**

**2 position single: VZA4121-01**

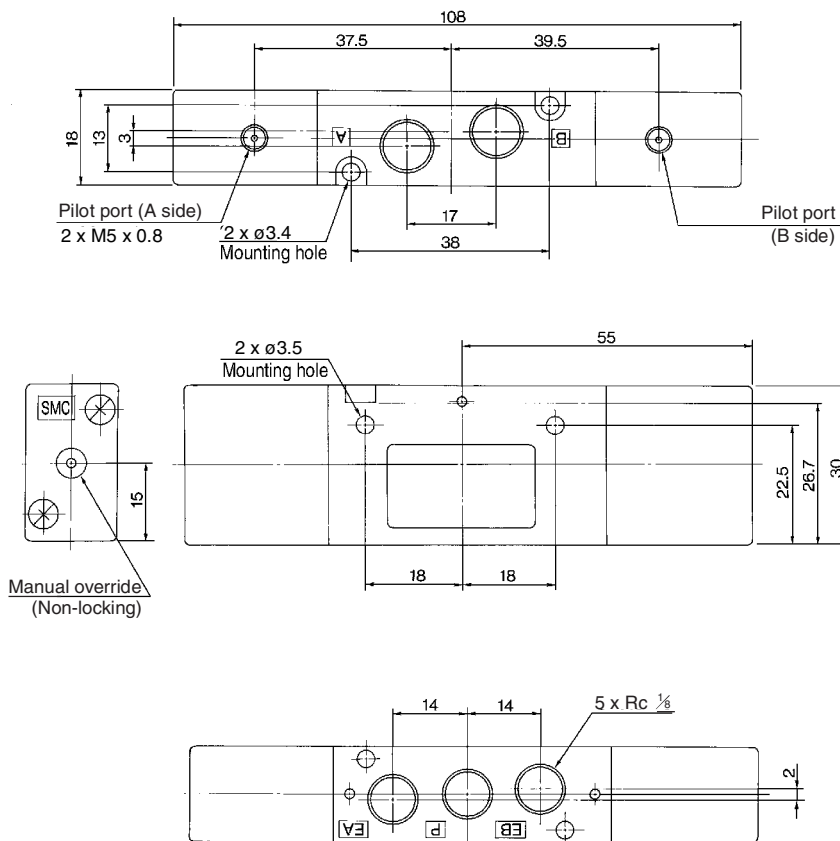


**2 position double: VZA4221-01**



**3 position closed center: VZA4321-01**

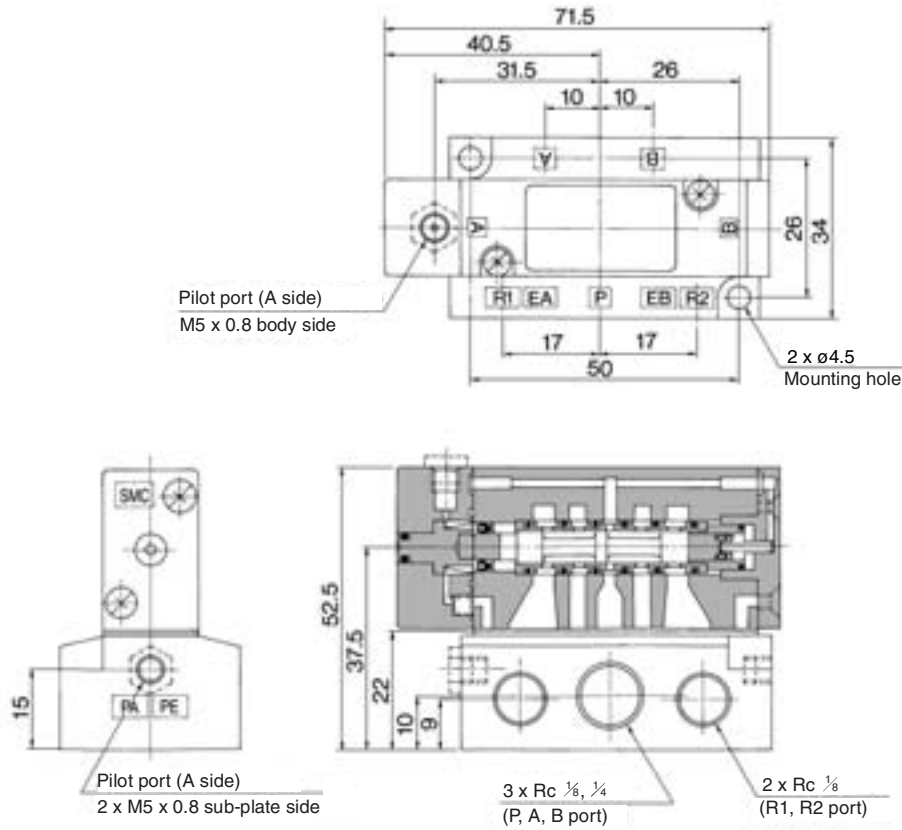
**3 position exhaust center: VZA4421-01**



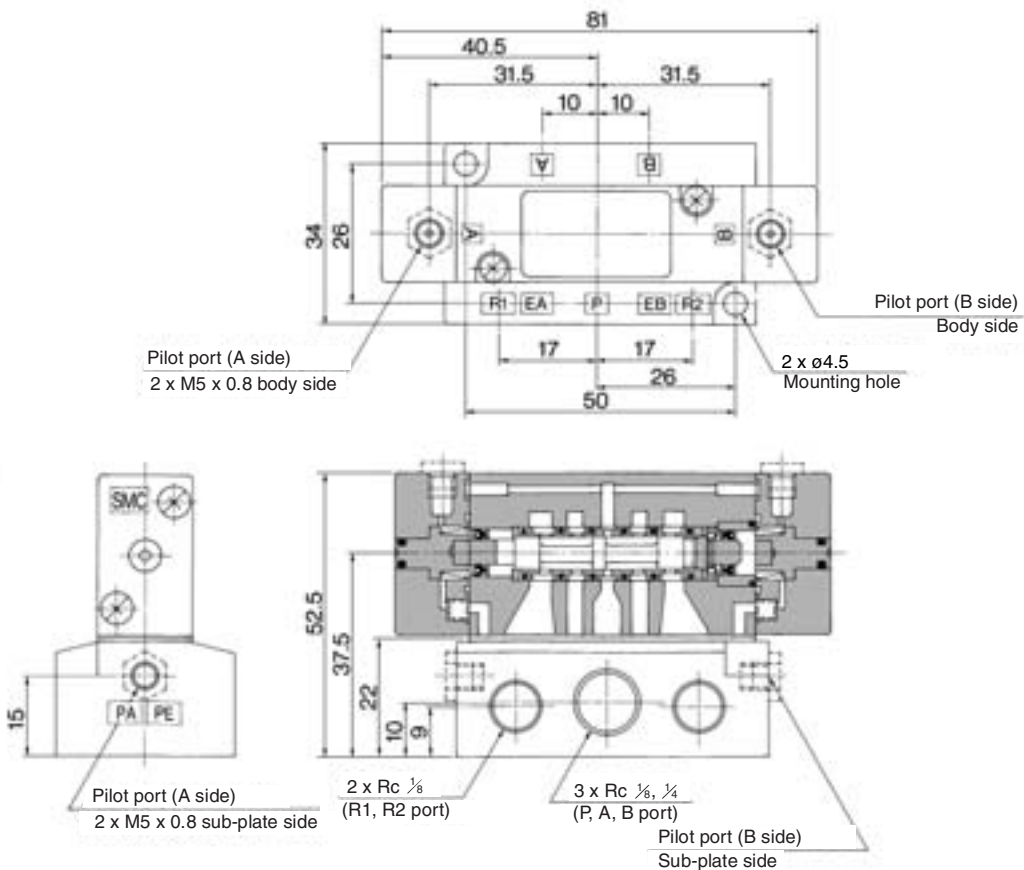
# Series VZA4000

## Dimensions: Base Mounted

### 2 position single: VZA4141-□-01-02

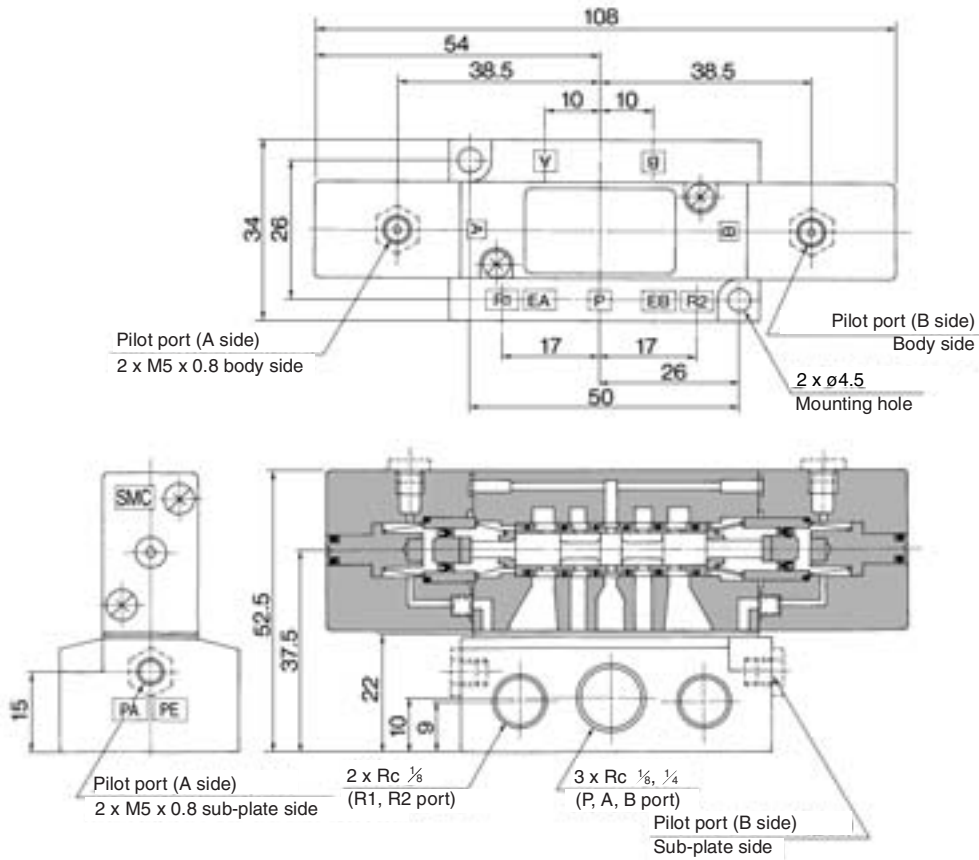


### 2 position double: VZA4241-□-01-02



**Dimensions: Base Mounted**

**3 position closed center: VZA4341-□-01-02**



**3 position exhaust center: VZA4441-□-01-02**

